

(No Model.)

W. H. ALLEN.

BOB SLEIGH.

No. 343,156.

Patented June 8, 1886.

Fig. 1.

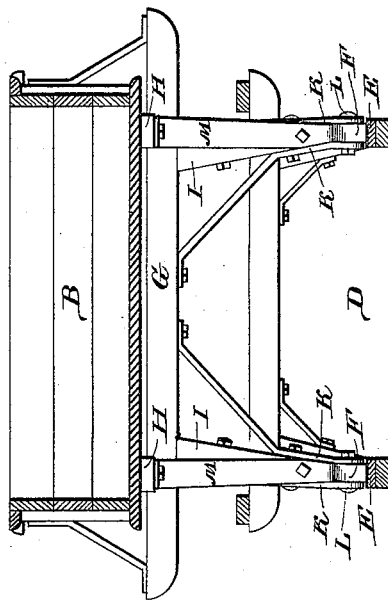
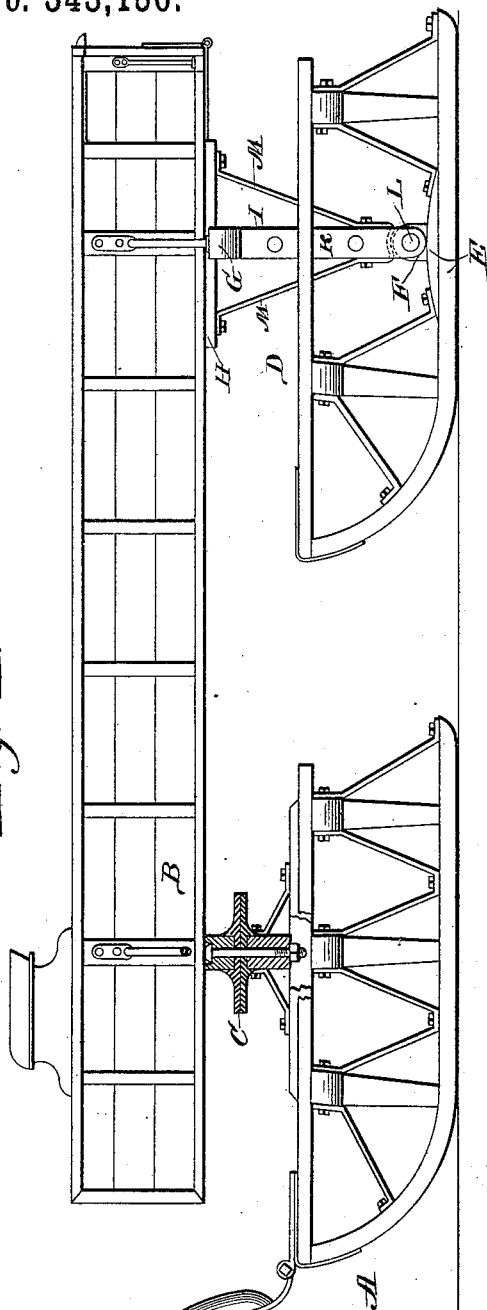


Fig. 2.

Witnesses

Wm. C. Brown
E. J. Siggers

Inventor,

William H. Allen

By his Attorneys

C. A. Snow & Co.

UNITED STATES PATENT OFFICE.

WILLIAM HENRY ALLEN, OF WINDHAM CENTRE, MAINE.

BOB-SLEIGH.

SPECIFICATION forming part of Letters Patent No. 343,156, dated June 8, 1886.

Application filed April 5, 1886. Serial No. 197,872. (No model.)

To all whom it may concern:

Be it known that I, WILLIAM HENRY ALLEN, a citizen of the United States, residing at Windham Centre, in the county of Cumberland and State of Maine, have invented a new and useful Improvement in Bob-Sleds, of which the following is a specification.

My invention relates to an improvement in bob-sleds; and it consists in the peculiar construction and combination of devices that will be more fully set forth hereinafter, and particularly pointed out in the claim.

In the drawings, Figure 1 is a side elevation of my invention, partly in section. Fig. 2 is a transverse sectional view of the same.

A represents the front bob, which is connected to the body B by means of a fifth-wheel or other pivotal connection, C.

D represents the rear bob the runners of which are provided on their upper sides near their centers with bolted plates E, from the centers of which project vertical lugs F.

G represents a bolster, which is provided near its ends with horizontally-extending bars H, arranged at right angles to the bolster, the said bars being bolted or otherwise secured to the under side of the body B near the rear end thereof.

From the bolster G depend standards I, which are mortised to the bolster, and are provided on their inner and outer faces with metallic plates K, which are bolted thereto and extend below the lower ends of the standards, and are provided with transverse openings k, through which, and through transverse openings, which are made in the lugs F, pass pivotal bolts or pins L. It will thus be seen that the rear bob is

pivoted below the rear end of the body, and that the pivotal connection between the bob and the body is directly on the upper sides of the runners, whereby the said pivotal connection is thrown at the lowest possible point.

The standards I are connected to the bars H by means of suitable brace-rods, M.

To the front end of the front bob are attached the thills or pole O by suitable thill-couplings. By thus attaching the thills directly to the front bob instead of to the body of the sled, and by pivoting the front bob to the sled-body, the sled is enabled to be readily turned and its draft on the animal is lightened.

A bob-sled thus constructed is cheap and simple, is very strong and durable, and runs easily and smoothly.

Having thus described my invention, I claim—

The combination, in a bob-sled, of the body, the front bob pivoted thereto, the bolster G, having the transverse bars H, attached to the rear end of the body, the standards I, depending from the bolster, the plates K, secured to the standards and depending from the lower ends thereof, and the rear bob having the runners provided with lugs F, pivoted to the depending ends of the plates K, substantially as described.

In testimony that I claim the foregoing as my own I have hereto affixed my signature in presence of two witnesses.

WILLIAM HENRY ALLEN.

Witnesses:

THOMAS C. ALLEN,
BETSEY E. ALLEN.