

(No Model.)

E. J. LUCE.
DEVICE FOR PLAYING GAMES.

No. 343,541.

Patented June 8, 1886.

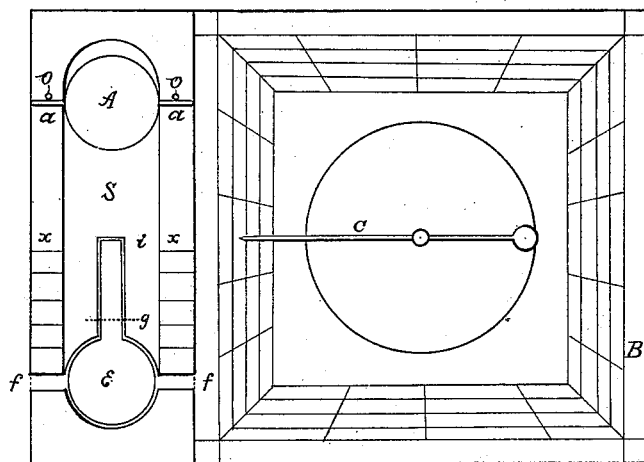


Fig. 1.

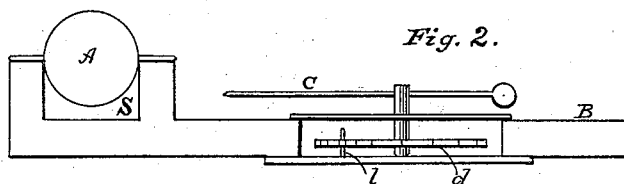


Fig. 2.

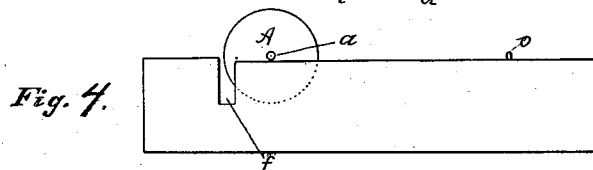


Fig. 4.

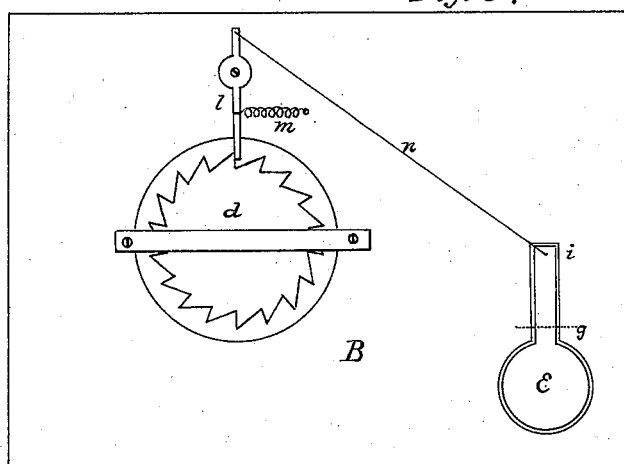


Fig. 3.

Witnesses
Fred H. Mason
A. C. Fuller

Inventor
Edward J. Luce
by J. H. Mason
att'y.

UNITED STATES PATENT OFFICE.

EDWARD J. LUCE, OF NEW BEDFORD, MASSACHUSETTS.

DEVICE FOR PLAYING GAMES.

SPECIFICATION forming part of Letters Patent No. 343,541, dated June 8, 1886.

Application filed February 18, 1886. Serial No. 192,374. (No model.)

To all whom it may concern:

Be it known that I, EDWARD J. LUCE, a citizen of the United States, residing at New Bedford, in the county of Bristol and State of Massachusetts, have invented a new and useful Device by Means of Which a Variety of Games can be Played, of which the following is a specification.

In the accompanying drawings, Figures 1 represents a plan view of my device, showing the graduated dial, &c. Fig. 2 is a sectional view in a line with one side of the inside square of the dial. Fig. 3 represents a view of the bottom of the device. Fig. 4 represents a side elevation of the groove, showing the notches *f*.

In Fig. 1, B represents the board on which is the graduated dial. C represents the needle, pivoted so as to revolve above said dial.

S is a groove at one end of the board B, in which revolves on its axis *a* the ball A. The groove S is more clearly shown in Fig. 2. The groove S is provided at one end with notches *f*, for a purpose hereinafter described.

E represents a lever pivoted at *g*, which lever is arranged in the bottom of the groove S. The end *i* of the lever E is attached by means of a cord, *n*, to one end of the pivoted arm *l*, Fig. 3, the other end of said arm *l* engaging with the toothed wheel *d*, which toothed wheel is mounted on the needle pivot.

m is a coiled spring which retracts the arm *l* to its normal position.

o o are pins against which the axis of the ball A rests, in order that the ball may be started squarely.

The operation of the device is as follows: The ball A is moved to that end of the groove where it is shown, with the axis resting against the pins *o o*. It is then given an impetus with the finger toward the opposite end of the

groove. If it reaches that end, the axis drops into the notches *f* and the ball strikes the lever E, which motion raises the end *i*, and by means of the cord *n* and arm *l* and toothed wheel *d* revolves the needle C.

The letter, figure, or character on which the needle stops indicates a certain play or count in the game, &c. Should the ball in its motion stop short of the notches *f*, that indicates a different play or count, the ways *xx*, upon which the axes of said ball A travel, being graduated, as indicated in said drawing.

Having thus described my invention, what I claim, and desire to secure by Letters Patent, is—

1. The combination of a game-board having a graduated dial and a groove, a needle pivoted above said dial, a toothed wheel mounted on the needle-pivot beneath the dial, a pivoted arm engaging said wheel, a lever pivoted in one end of the groove and connected with said pivoted arm, and a ball adapted to revolve in the groove and actuate the needle through the pivoted lever and intermediate mechanism, substantially as described.

2. A device for playing games, consisting of the combination of a board the upper surface of which is provided with a graduated scale or dial, numbered, lettered, or characterized, and a groove having notches near one end, a ball having trunnions adapted to revolve in said groove, with its trunnions resting on the sides thereof, a needle or pointer pivoted so as to revolve above said dial, and the lever E, cord *n*, arm *l*, and toothed wheel *d*, by means of which the ball is made to operate the needle, all as shown and described.

EDWARD J. LUCE.

Witnesses:

FRANK A. MILLIKEN,
JOSEPH IDA TERRA.