

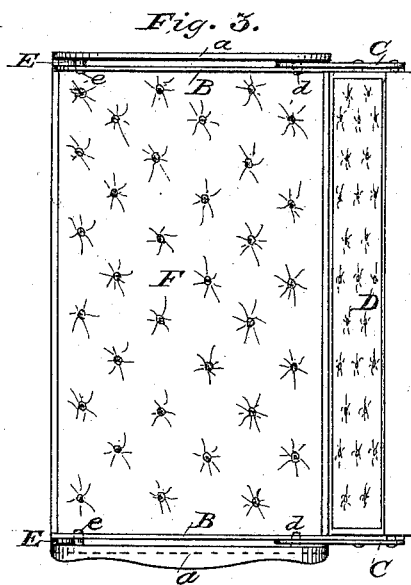
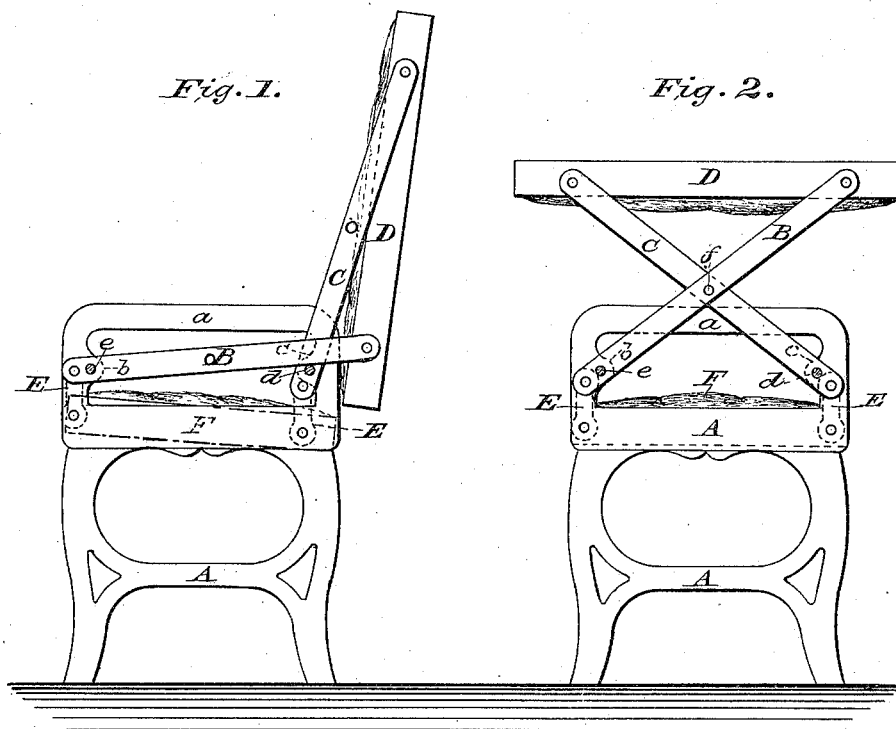
(No Model.)

J. C. KAHER.

CAR SEAT.

No. 344,112.

Patented June 22, 1886.



Witnesses:

John Lowe

A. M. P. Maschmeyer.

Inventor:

John C. Kafer,

By J. C. Bruck,

Attorney.

# UNITED STATES PATENT OFFICE.

JOHN C. KAER, OF WASHINGTON, DISTRICT OF COLUMBIA.

## CAR-SEAT.

SPECIFICATION forming part of Letters Patent No. 344,112, dated June 22, 1886.

Application filed September 10, 1885. Serial No. 176,705. (No model.)

### *To all whom it may concern:*

Be it known that I, JOHN C. KAER, a citizen of the United States, residing at Washington, in the District of Columbia, have invented certain new and useful Improvements in Car-Seats; and I do hereby declare the following to be a full, clear, and exact description of the invention, such as will enable others skilled in the art to which it appertains to make and use the same.

My invention relates to improvements in that class of car-seats which are made reversible, as desired; and the object is to produce a car-seat that is very simple in its construction, and can be easily and quickly reversed; also, to increase the height or width of the back, which, as is well known, is made too low usually for comfort; also, to impart a slight inclination or slant to the seat, and thus afford a more comfortable position for sitting; and, further, to provide means by which the back of the seat can be used as a table for amusement, lunch, &c.

The invention consists in the construction of certain details and arrangement of parts, as will be more fully described hereinafter, and more specifically pointed out in the claims, reference being had to the accompanying drawings and the letters of reference marked thereon.

Like letters indicate similar parts in the different figures of the drawings, in which—

Figure 1 represents a side elevation of my improved car-seat. Fig. 2 is a side elevation of the car-seat arranged as a table. Fig. 3 is a plan view of the car-seat.

In the accompanying drawings, A represents the main body or frame of the car-seat, made either double or single and of any suitable size and configuration. To the arms *a* of this seat are pivoted the levers B and C, and preferably to the lugs *b c* at one end, while the opposite ends of said levers are pivoted to the sides of the car-seat back D. They cross each other, and are so arranged that the lever B, as seen in Fig. 1, will rest upon the pin *d* of the lever C, and if the seat were reversed the lever C would rest upon the pin *e*

of the lever B. The lower ends of the levers B and C are extended a short distance, and to said ends are pivoted two short links, EE, which support the seat F, to which they are pivoted, and hold it thus in a suspended position, so that it can swing freely.

It will be readily seen that as the links EE are both of the same length and are suspended from the extended ends of the levers B C the seat proper will receive a slight inclination, which is far more comfortable during sitting than when perfectly level. When the car-seat back is reversed, the seat will of course receive an inclination in the opposite direction from that shown in Fig. 1.

If it is desired to use the back of the car-seat for amusement or any other purpose, it is placed in the position shown in Fig. 2, when the rear side of the back, which is ordinarily covered with leather, baize, or similar material, forms a perfectly-level surface suitable for card-playing or other games; or it can be employed for taking lunch, &c. In this instance a pin, *f*, can be inserted in suitable holes made in the levers B C at the point where they cross each other; or any catch or holding device may be employed to hold it in its level position, and can be attached to the arms or other part of the seat.

By this arrangement of levers and attachment to the back of the seat it can be increased in height or width, and will form a convenient rest for the head and back. The seat is not liable to get out of order. It can be easily applied to old as well as new seats at a very small expense. It forms a very light attachment, although a very strong one, and, if desired, can be made very ornamental, while the arms can be made very low, which is a desirable advantage.

I am aware of the Patent No. 324,825, and disclaim the construction therein shown; but,

Having thus described my invention, what I claim, and desire to secure by Letters Patent, is—

1. The combination of a body, A, having arms *a*, to which levers B C are pivoted, as at *e*, said levers having elongations, to which

the links E are attached and support the seat F, with the back D, all as and for the purpose specified.

2. The combination of a body, A, having  
5 arms *a*, provided with lugs *b* and pins *e*, to which the levers B C are pivoted at one end and to the back D at the other, with the links E, supporting the seat F, and attached to elon-

gations on said levers B C, all constructed as shown and set forth. 10

In testimony whereof I hereby affix my signature in presence of two witnesses.

JOHN C. KAUFER.

Witnesses:

JOHN LOWE,

A. M. P. MASCHMEYER.