

(No Model.)

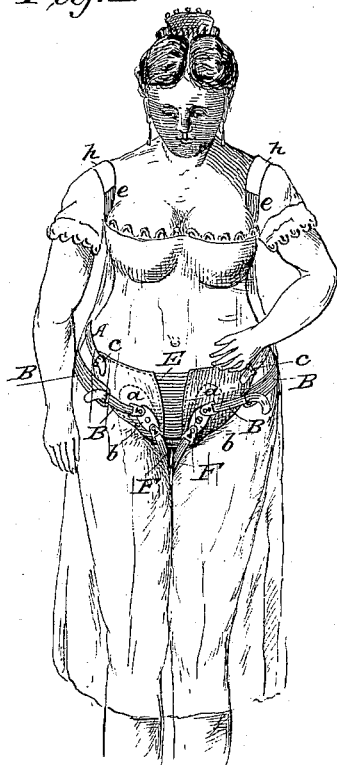
W. B. DEWEES.

ABDOMINAL AND SPINAL BRACE.

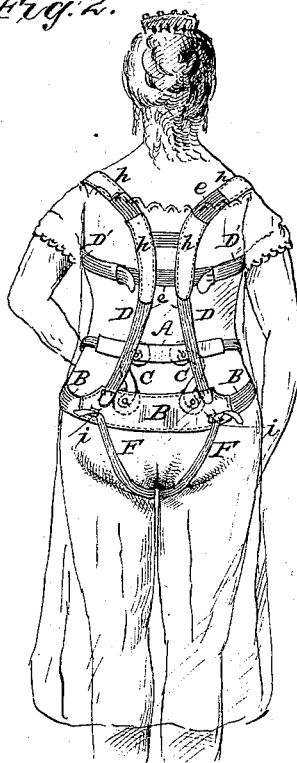
No. 344,639.

Patented June 29, 1886.

*Fig. 1*



*Fig. 2.*



WITNESSES:

*Fred G. Dieterich*

*Edw. W. Beyer*

INVENTOR:

*Wm. B. Dewees*

BY *Munn & Co*

ATTORNEYS.

# UNITED STATES PATENT OFFICE.

WILLIAM B. DEWEES, OF SALINA, KANSAS.

## ABDOMINAL AND SPINAL BRACE.

SPECIFICATION forming part of Letters Patent No. 344,639, dated June 29, 1886.

Application filed March 20, 1886. Serial No. 196,014. (No model.)

*To all whom it may concern:*

Be it known that I, WILLIAM B. DEWEES, of Salina, in the county of Saline and State of Kansas, have invented a new and useful Improvement in Abdominal and Spinal Shoulder-Braces, of which the following is a specification.

Figure 1 is a front, and Fig. 2 a rear view, of the invention, shown applied to a female figure.

My invention is in the nature of an abdominal and spinal shoulder-brace, designed to support and strengthen these weakened parts with perfect comfort and freedom.

In the drawings, Fig. 1, E is the front pad, which is made of leather and elastic webbing, as shown, lined on the inside, and provided with a large metal plate, *a*, within, and another metal plate, *b*, with two studs, on the outside, which latter is riveted by means of these two studs to the inner metal plate, with the leather intervening. There is an elastic gore between the two half-pads, and a buckle, *c*, is set diagonally at the upper and outer corner of each, to receive the elastic band of a belt, hereinafter described.

Referring now to Fig. 2, which shows the back combination, D D' is the shoulder-brace, made of leather and elastic, leather being indicated by *h* and the elastic portions by *e*. The lower two ends of this shoulder-brace are buckled to the upper edge of the leather portion in belt B. This belt B is made of leather, middle portion lined inside with broad (two-inch) elastic bands, permanently fastened at the ends, to which again are attached buckles and an overlapping narrower band, B', receiving a metal loop, which is hooked over the stud of

plate *b* in front pad, as shown in Fig. 1. On the back part of this belt are also fastened two buckles, *i i*, which receive the back end of the perineal straps or elastic bands F, (shown in Fig. 2,) and whose forward ends pass between the legs and are hooked over the lower stud of plate *b* in front. C are steel springs, which are S-shaped, and have at both ends pads fastened to them by studs riveted through them, or by stud-screws, and which studs or screws have heads that are simply buttoned into eyelets in the belts A and B, resting against the dorso-lumbar spine under the elastic band connecting the shoulder-brace with belt B.

Having thus described my invention, what I claim as new is—

1. The combined abdominal spinal and shoulder-brace, consisting of the shoulder-braces D D', band A, hip-belt B, the front pad, E, with buckles *c c*, for connection with the ends of band A, and studded plates *b b*, and the perineal strap F, substantially as shown and described.

2. The springs C, with pads at their ends, combined with and buttoned into the band A and belt B, on opposite sides of the middle line of the back, the shoulder-braces D D', the front pad, E, and perineal strap F, substantially as and for the purpose described.

3. The combination, with an abdominal supporter having shoulder-braces, of two spring-pads arranged upon opposite sides of the middle line of the back, substantially as described.

WILLIAM B. DEWEES.

Witnesses:

C. W. LYNN,  
C. HENNE.