

(No Model.)

J. ERB.  
PRISON.

No. 344,644.

Patented June 29, 1886.

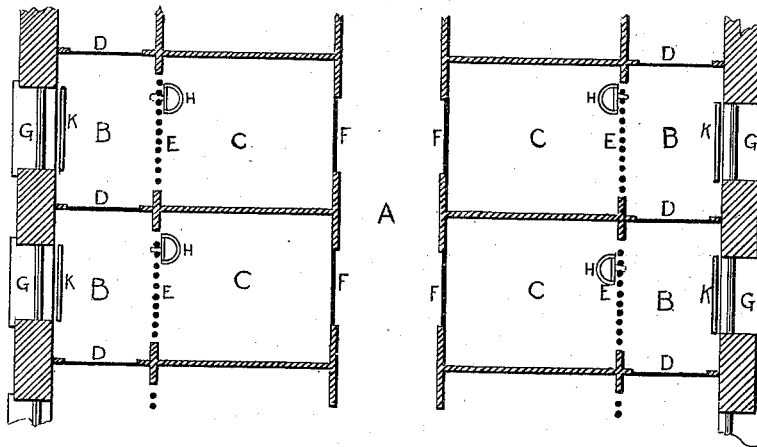


Fig. 1.

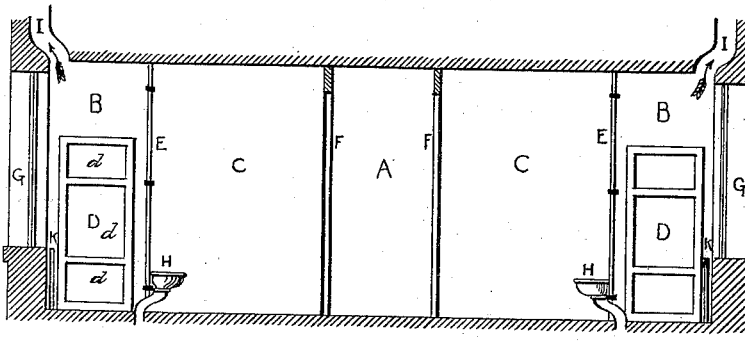


Fig. 2.

WITNESSES:

A. K. Browne  
A. B. Burres.

INVENTOR

Joseph Erb  
per M. M. M. M.  
ATTORNEYS

# UNITED STATES PATENT OFFICE.

JOSEPH ERB, OF COLUMBUS, OHIO.

## PRISON.

SPECIFICATION forming part of Letters Patent No. 344,644, dated June 29, 1886.

Application filed April 22, 1886. Serial No. 199,770. (No model.)

*To all whom it may concern:*

Be it known that I, JOSEPH ERB, a citizen of the United States, residing at Columbus, in the county of Franklin and State of Ohio, have  
5 invented new and useful Improvements in Construction of Prisons, of which the following is a full and exact description, reference being had to the accompanying drawings, making part of this specification.

10 My invention relates to an improvement in the construction of prisons, and has for its objects to procure the perfect isolation of the prisoners, and to prevent them from talking to those in the adjacent cells; to confine bad  
15 odors to one cell, instead of allowing them to circulate throughout the whole prison, and to prevent the spreading of disease; to prevent the waste of heat by cutting off that portion of the prison not in use, and to procure  
20 perfect ventilation.

Prisons as heretofore constructed have been provided with corridors between the windows and cells, the light being introduced into the cells through bars facing the windows. In  
25 this passage is a watchman, who can see from one end of the prison to the other, and can thus prevent escape beyond the passage. The difficulty with this method is that the prisoners can hold conversation through the bars and conspire for some concerted action. By  
30 this means bad odors and pestilential diseases may be transmitted from one cell throughout the prison, or at least that section of the prison in which the foul cell is. By this means the heat has to be great enough to heat the whole  
35 section, when only a small part is occupied.

In the accompanying drawings, which illustrate my invention, Figure 1 is a plan view of a section of a prison provided with my invention. Fig. 2 is a section of the same.  
40

A is the center corridor of the prison, into which the cells C open by means of the door F.

B B are the corridors between the cells C C and the windows G G.

45 C C are the cells provided with solid partitions and door F. At the rear of cells C C are gratings E E.

50 D D are doors in the corridors B B, between each cell. They are provided with clear glass panels d d.

G G are barred windows of the ordinary construction.

H H are water-closet hoppers, placed against the grating for convenience of cleaning without coming in contact with the prisoner.

I I are ventilating-shafts, placed so as to conduct the foul air from each cell separately.

K K are steam-coils for heating, and are placed in the corridor B, out of reach of the prisoner.

By means of the door D the prisoner is perfectly isolated from his neighbors, while the purpose of the corridor is still preserved, as the watchman can still see from one end of the corridor to the other through the glass paneling d; the bad odors and diseases are in a great measure prevented from spreading; the heat is preserved for only the occupied cells, and by means of the ventilating-shaft in each cell a perfect ventilation is secured.

Having thus described my invention, what I claim is—

1. The construction of prisons or other places of confinement provided with corridors between the windows and cells, with partitions in said corridors between the said cells, provided with doors having transparent panels, substantially as set forth.

2. The construction of prisons or other places of confinement provided with corridors between the windows and cells, with partitions in said corridors between the said cells, provided with doors having transparent panels, and heating apparatus between each two of said partitions, substantially as set forth.

3. The construction of prisons or other places of confinement provided with corridors between the windows and cells, with partitions in said corridors between the said cells, provided with doors having transparent panels, with heating apparatus and a ventilating-shaft between each two of said partitions, substantially as set forth.

In testimony whereof I have hereunto set my hand this 19th day of April, A. D. 1886.

JOSEPH ERB.

Witnesses:

C. W. MURDOCK,  
C. C. YOST.