

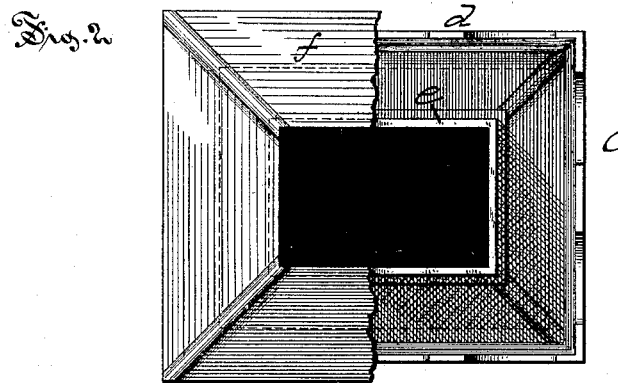
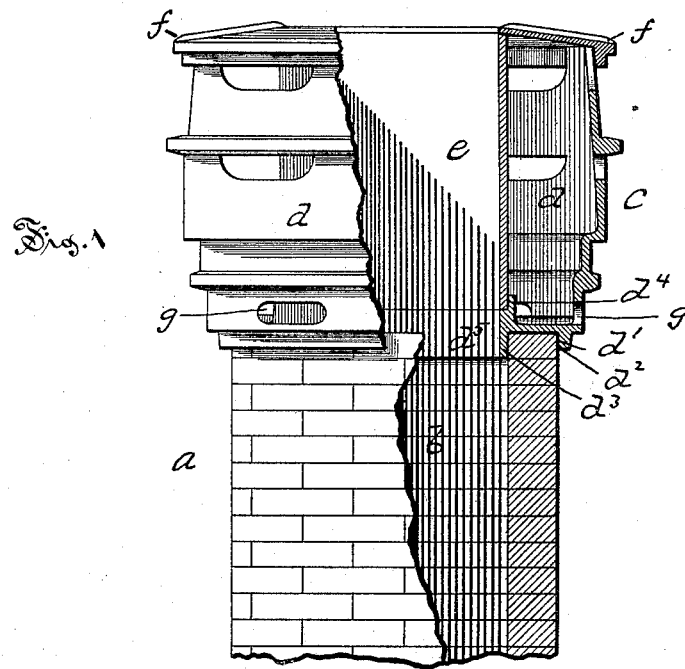
(No Model.)

A. HERENDEEN.

CHIMNEY TOP.

No. 344,832.

Patented July 6, 1886.



Witnesses:

W. M. Dyckman  
H. R. Williams.

Inventor:

Alvanor Herenden,  
by Simon & Burdett,  
Attys.

# UNITED STATES PATENT OFFICE.

ALMANZON HERENDEEN, OF PUTNAM, CONNECTICUT.

## CHIMNEY-TOP.

SPECIFICATION forming part of Letters Patent No. 344,832, dated July 6, 1886.

Application filed May 6, 1886. Serial No. 201,352. (No model.)

*To all whom it may concern:*

Be it known that I, ALMANZON HERENDEEN, of Putnam, in Windham county, State of Connecticut, have invented certain new and useful Improvements in Chimney-Tops, of which the following is a full, clear, and exact description, whereby any one skilled in the art can make and use the same.

My improved chimney-cap consists, essentially, of a hollow casing composed of an inner and an outer wall, forming an open and free space therebetween, a flange or base portion closing the space at its lower end, and provided with a socket to fit upon the top edge of the chimney, a cap-plate covering the upper end of the space formed by the said walls, and suitable openings in the outer wall to permit the ingress and egress of air or water, or both, as will be hereinafter more fully described and particularly claimed.

In the accompanying drawings, the letter *a* denotes the top of a chimney that is built of brick, *b* a flue within the chimney, and *c* the protector as a whole. This protector is composed of the casing *d*, of a size somewhat larger than the outside dimension of the chimney, and preferably made of cast metal, as iron, and the flue-extension *e*, that is also of metal. In the under side of the casing *d* there is a socket, *d'*, formed by downturned flanges from the base of the casing, the outer flange, *d''*, extending down the outer side of the chimney a distance equal to one or more courses of the brick, and the inner flange, *d'''*, extending a like distance downward within the chimney. A socket, *d''*, in the upper part of the base and in an extension of the flange *d''*, between the sides of which is the flue-opening *d''*, serves to receive the lower end of the flue-extension *e*. The space between the outer walls of the casing *d* and the walls of the extension *e* is protected from the weather by the cover *f*, that fits upon the top of the device, and is secured thereto by any convenient

means, as bolts or screws. The outer walls of the casing are provided with a series of projecting bands, so as to form an ornamental feature, and through the walls of the casing a number of openings are made to lighten the device, and also to permit the circulation of air, the lower opening, *g*, serving as a means for the egress of water that may accumulate within the casing.

The protector is attached to the chimney by placing it upon the top thereof, that extends within the socket in the bottom of the protector a distance equal to one or more courses of brick. This thoroughly protects the upper courses from the action of the weather, that tends to disintegrate the mortar and loosen the brick, and the flue-extension, in combination with the casing, prevents the smoke, with the deleterious gases, from coming in contact with the brick and mortar.

I claim as my improvement—

1. A chimney-cap consisting, essentially, of a hollow casing composed of the inner and outer walls, *e* and *d*, forming an open and free space therebetween, a flange or base portion closing the space at its lower end and provided with a socket to fit upon the top edge of the chimney, a cap-plate covering the upper end of the space formed by the walls, and suitable openings in the outer walls, as set forth.

2. A chimney-cap comprising the outer casing, *d*, having the inward-projecting flange provided with a socket at its lower side, whereby it is adapted to fit upon the upper edge of the chimney, a removable flue-extension or inner wall, *e*, fitting in said casing *d*, and forming a chamber between itself and the outer casing, *d*, for the circulation of air, and a cap-plate, *f*, covering the upper end of said chamber, substantially as described.

ALMANZON HERENDEEN.

Witnesses:

CHAS. L. BURDETT,  
H. R. WILLIAMS.