

(No Model.)

J. H. FELMLEE.

SASH HOLDER.

No. 348,273.

Patented Aug. 31, 1886.

Fig 1

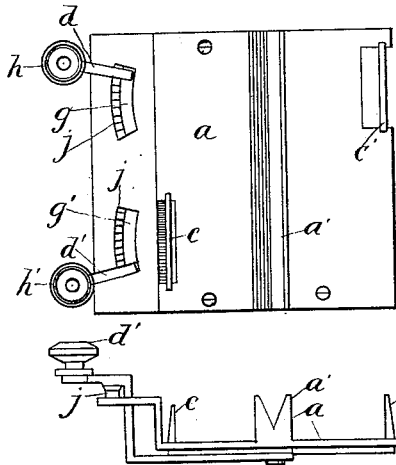


Fig 2

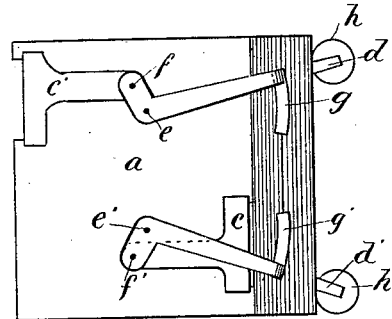


Fig 3

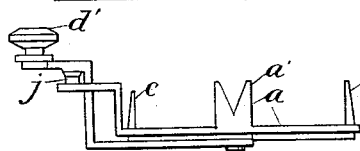
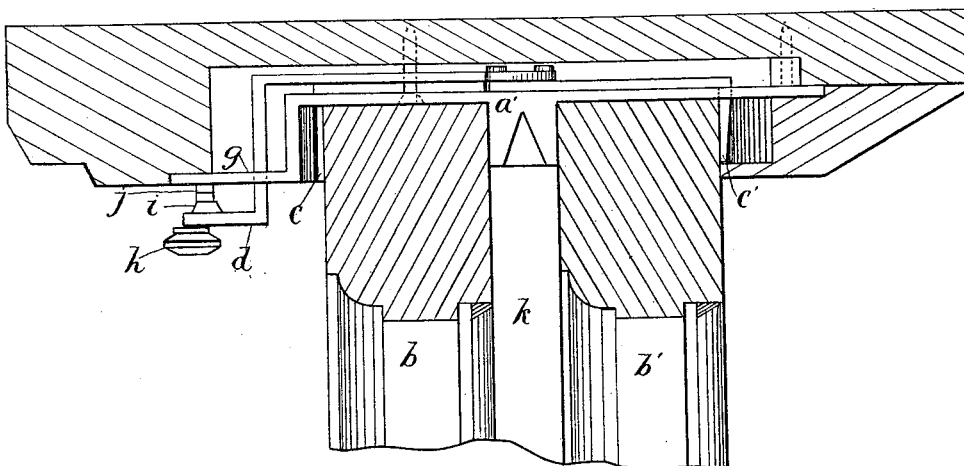


Fig 4



Attest
Thos. Farmer
R. P. Ellis

Inventor
John H. Felmlee
by
Geo C Morris
his Atty.

UNITED STATES PATENT OFFICE.

JOHN H. FELMLEE, OF GREELY, ASSIGNOR OF ONE-HALF TO GEORGE C. NORRIS, OF DENVER, COLORADO.

SASH-HOLDER.

SPECIFICATION forming part of Letters Patent No. 348,273, dated August 31, 1886.

Application filed April 17, 1886. Serial No. 199,177. (No model.)

To all whom it may concern:

Be it known that I, JOHN H. FELMLEE, a citizen of the United States, residing at Greeley, in the county of Weld and State of Colorado, have invented a new and useful Sash-Holder, of which the following is a specification.

My invention relates to improvements in sash-holders, and the object of my invention is to provide a means by which the upper and lower sashes of windows may be adjusted to any desired position and held firmly locked at that point, and also to provide a means of holding the sashes when closed, so they will not rattle nor admit dust where the two sashes come together. I attain these objects by the mechanism shown in the accompanying drawings, in which—

Figure 1 is a front view of the holder. Fig. 2 is a back view. Fig. 3 is a top view. Fig. 4 is a view of the holder when in place on the window, showing the two sashes and the jamb in section.

Similar letters refer to similar parts throughout the several views.

a is a plate fashioned as shown in Figs. 1, 2, and 3.

a' is a projection from the plate on either side of which work the sashes *b* and *b'*, and against which they are forced when locked by the clamps *c* and *c'*. These clamps are worked by the levers *d* and *d'*, which are fulcrumed

at *e* and *e'* to the plate *a*, and pivoted to the clamps at *f* and *f'*. The ends of the levers *d* and *d'* are bent, as shown in Fig. 4, and pass from beneath the plate *a* up through the slots *g* and *g'* to the outside. To the ends of the levers are attached the thumb-buttons *h* and *h'*. Underneath the levers are projections marked *i*, which engage in ratchets *j*, which hold the levers when locked.

The piece *k*, Fig. 4, is a portion of the sash *b* to fill space between it and *b'*.

It will be seen that when lever *d'* is in the position shown in Fig. 2, the clamp *c* will be forced against the sash and toward the projection *a'*, and when lever *d* is in the position shown, the clamp *c'* is forced away from *a'* and the sash may be raised or lowered as the case may be, but when the levers are at the opposite ends of the slots *g* and *g'* the result will be the reverse.

Having now fully described my invention what I claim as new, and desire to secure by Letters Patent, is—

In a sash-holder, the combination of the plate *a*, with its projection *a'*, the clamps *c* and *c'*, worked by the bent levers *d* and *d'*, attached and operated as described, and for the purpose set forth.

JOHN H. FELMLEE.

Witnesses:

HARRY D. CASSIDAY,
ROBT. A. LONG.