

H. CROCKER.

BOOK HOLDER.

No. 348,382.

Patented Aug. 31, 1886.

Fig. 1.

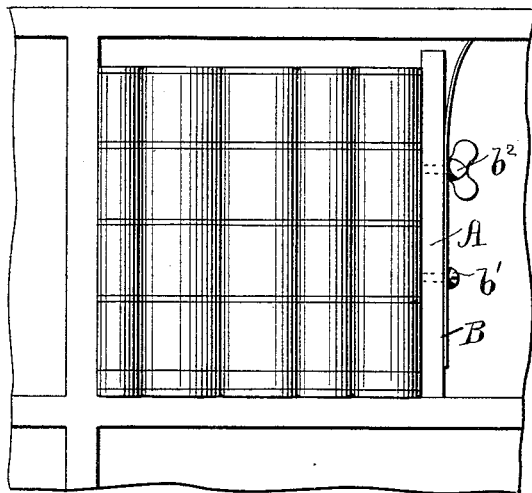


Fig. 2.

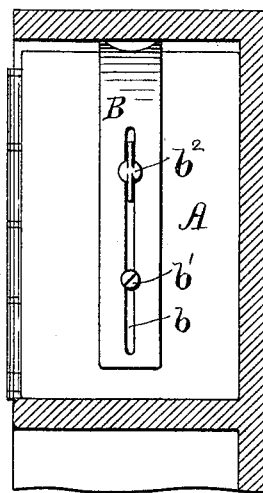


Fig. 3.

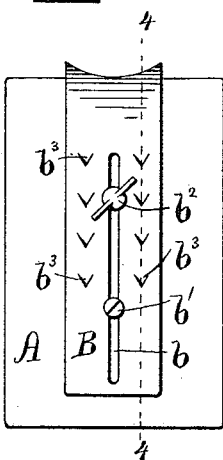


Fig. 4.

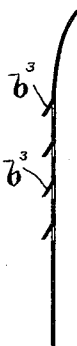


Fig. 5.

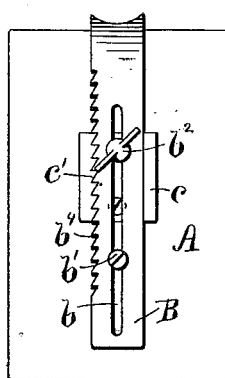
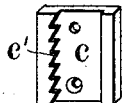


Fig. 6.



WITNESSES:

Chas. H. Luther Jr.  
Jno. L. Condon

INVENTOR:

Henry Crocker  
Joseph A. Miller & Co.  
Attys

H. CROCKER.

BOOK HOLDER.

No. 348,382.

Patented Aug. 31, 1886.

Fig. 7.

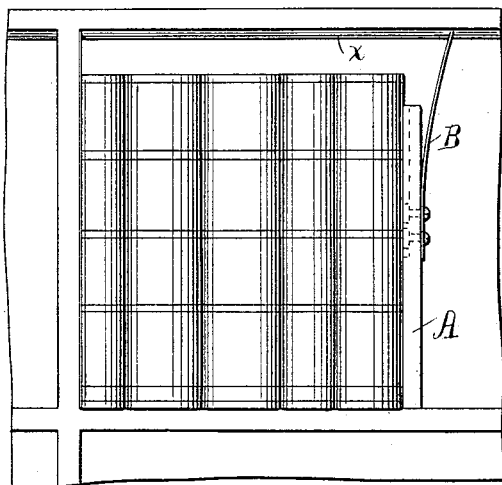


Fig. 8.

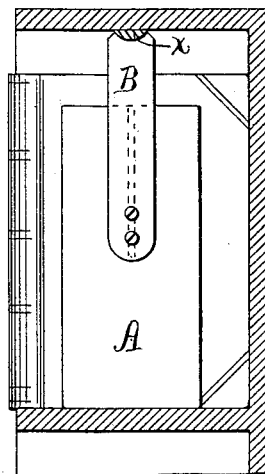


Fig. 9.

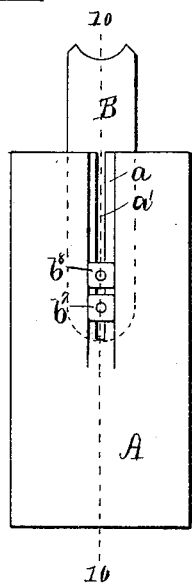
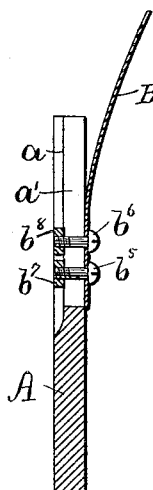


Fig. 10.



WITNESSES:

Chas. H. Luther Jr.  
Jno. L. Condon

INVENTOR:

Henry Crocker  
Joseph A. Miller

# UNITED STATES PATENT OFFICE.

HENRY CROCKER, OF BRISTOL, RHODE ISLAND.

## BOOK-HOLDER.

SPECIFICATION forming part of Letters Patent No. 348,382, dated August 31, 1886.

Application filed December 15, 1885. Serial No. 185,684. (No model.)

### *To all whom it may concern:*

Be it known that I, HENRY CROCKER, of Bristol, in the county of Bristol and State of Rhode Island, have invented a new and useful Improvement in Book-Holders, of which the following is a full, clear, and exact description, reference being had to the accompanying drawings, forming a part of this specification.

My invention relates to devices for holding books upright upon partially-filled bookshelves; and the object of my invention is to produce a cheap and durable holder, and one which may be readily adjusted to shelves differently spaced.

To the above purposes my invention consists in a book-holder composed of a backing-piece adapted to stand upon the shelf and to abut against the side of a book thereon, and provided with a spring-arm adapted to engage beneath the shelf above for the purpose of sustaining the thrust of the line of books, as hereinafter described and claimed.

In order that my invention may be fully understood, I will proceed to describe it with reference to the accompanying drawings, in which—

Figure 1 is a side elevation of my improved book-holder in operative position between the shelves of a book-case shown in part. Fig. 2 is a front elevation of the same. Fig. 3 is a front elevation of a modified form of my invention. Fig. 4 is a longitudinal section of the spring-arm on the line 4 4 of Fig. 3. Fig. 5 is a front elevation of a still further modification of my invention. Fig. 6 is a detached view of the serrated guide shown in Fig. 5. Fig. 7 is a side elevation of a modified form of the book-holder in operative position between the shelves of a book-case shown in part. Fig. 8 is a front elevation of the same. Fig. 9 is a rear view of the same in detached condition. Fig. 10 is a sectional view of the same on the line 10 10 of Fig. 9.

In the said drawings, A designates the backing-piece of the holder, which rests upon the lower shelf bearing the books, and which may be of any suitable or preferred material, wood being the material preferred by me.

B designates the spring-arm, which may be secured rigidly to the backing-piece A, but

which is preferably secured thereto in such manner as to be adjusted longitudinally thereon. I have shown several ways of securing the adjustable character of arm B.

In Figs. 1 and 2 the spring-arm is shown as formed with a longitudinal slot, *b*. A screw, *b'*, passes through the slot and into the backing-piece and binds upon the arm only sufficiently to prevent its detachment from the backing-piece while permitting its longitudinal adjustment thereon. A thumb-screw, *b''*, also passes through the slot and enters the backing-piece above the screw *b'*, so that by loosening thumb-screw *b''* the arm B may be adjusted, and by then tightening the screw *b''* the arm will be held from sliding upon the backing-piece. In Figs. 3 and 4 the slot *b*, screw *b'*, and thumb-screw *b''* are used, as before, but a number of teeth, *b'''*, are punched out of arm B, so as to bite into the backing-piece, and thus more surely prevent any slipping of the arm thereon.

In Figs. 5 and 6 the slot *b*, screw *b'*, and thumb-screw *b''* are used as before, but one edge of arm B is serrated, as at *b''''*, and these serrations engage with teeth *c'* upon the inner surface of one or two raised edges of a guide, *c*, through which arm B works. In each of these forms the arm B, when once adjusted, is held securely by the thumb-screw *b''* and screw *b'*, and is also held by the teeth or serrations.

When the device is to be applied to a shelf, as shown in Figs. 1 and 2, the arm is adjusted to correspond with the width of space between the shelves, and is first set with the lower end of the backing-piece against the end book. The upper end of the device is now forced toward the book, whereupon the outer end of the arm B will take into the substance of the upper shelf, and said arm will exert a strong downward pressure against the books, so as to keep them upright. This device is peculiarly adapted to libraries in which books of various sizes are kept, and where the holders are subjected to constant and generally careless handling.

In Figs. 7 to 10, inclusive, I have shown a further modification of my invention, and in which the backing-piece A is formed with a longitudinal groove, *a*, from the bottom of which opens a slot, *a'*, both slot and groove extending outward to the upper end of the

backing-piece A, at which point said groove and slot are left open. The spring-tongue B is secured adjustably to the backing-piece by two screws,  $b^5 b^6$ , upon the threaded ends of which are placed two nuts,  $b^7 b^8$ , the nuts working in the groove and the screws working in the slot. Thus, the spring-tongue may be readily adjusted by simply loosening the screws  $b^5 b^6$ , extending or retracting the tongue, and then tightening up the screws. In either of the forms above described a protective strip,  $x$ , of molding, of such form as to lie between the prongs at the outer end of tongue B, may be secured to the book-shelf or casing, so as to prevent said tongue from marring the casing or shelf.

In Letters Patent No. 314,437, dated March 24, 1885, granted to me for a book-holder, the said device has a body-piece with a tongue or spring-arm to engage with the upper shelf, the body resting upon a book or other foreign object as a support, and the said holder cannot be adjusted without the aid of such support. I am also aware of the use of complete partition-pieces as book-holders, which are maintained in operative position by means of pegs, rods, rings, or a large foot or cross piece, and hence do not claim such devices.

Having thus described my invention, I claim as new and desire to secure by Letters Patent—

1. An improved book-holder, consisting of a backing-piece adapted to rest upon the lower shelf approximately vertically against the side of an end book in a row, and provided with an adjustable spring-arm adapted to take into the shelf above, substantially as described.

2. The combination, with the backing-piece A, of the spring-arm B, having the slot  $b$ , the screw  $b'$ , and the thumb-screw  $b''$ , substantially as set forth.

3. The combination, with the backing-piece A, of the spring-arm B, having the slot  $b$ , and means for engaging with the backing-piece, the screw  $b'$ , and the thumb-screw  $b''$ , as specified.

4. The combination, with the shelves, of the book-holder consisting of the backing-piece provided with the spring-arm, which is adjustable longitudinally on said piece by means substantially as described.

HENRY CROCKER.

Witnesses:

J. A. MILLER, Jr.  
M. F. BLIGH.