

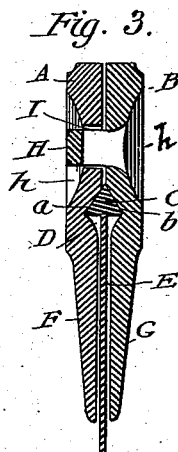
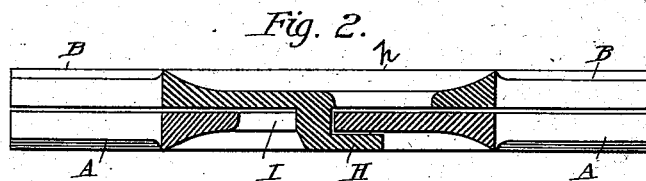
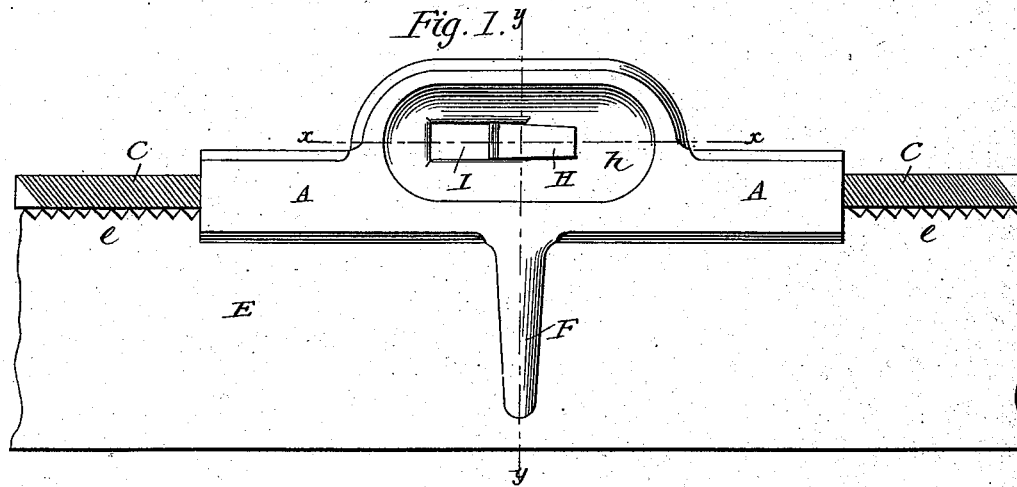
(No Model.)

C. R. BLACK.

SAW JOINTER.

No. 381,207.

Patented Apr. 17, 1888.



WITNESSES:

J. C. Clark
C. Sedgwick

INVENTOR:

C. R. Black

BY

Munn & Co

ATTORNEYS.

UNITED STATES PATENT OFFICE.

CHARLES RUFUS BLACK, OF TOPEKA, KANSAS.

SAW-JOINTER.

SPECIFICATION forming part of Letters Patent No. 381,207, dated April 17, 1888.

Application filed June 9, 1887. Serial No. 240,808. (No model.)

To all whom it may concern:

Be it known that I, CHARLES RUFUS BLACK, of Topeka, in the county of Shawnee and State of Kansas, have invented a new and Improved Saw-Jointer, of which the following is a full, clear, and exact description.

My invention relates to a device adapted for jointing or leveling the teeth of saws prior to filing the teeth sharp or to a point; and the invention has for its object to provide a simple, inexpensive, and efficient device of this character.

The invention consists in certain novel features of construction and combinations of parts of the saw-jointer, all as hereinafter described and claimed.

Reference is to be had to the accompanying drawings, forming a part of this specification, in which similar letters of reference indicate corresponding parts in all the figures.

Figure 1 is a side view of my improved saw-jointer as applied to use in jointing a saw-blade, which is shown only in part. Fig. 2 is a longitudinal section taken through the jointer-plates on the line *x x*, Fig. 1; and Fig. 3 is a transverse section taken on the line *y y*, Fig. 1.

The saw-jointer consists of two opposite clamp and guide plates, A B, and a file, C, which is held by and between the plates and operates on the saw-teeth to joint them, as presently described. The plates A B have a like general or marginal form, and at their longest parts are provided with opposite inclined faces, *a b*, respectively, against which any two angular faces of the triangular file C may rest, and whereby the other flat face of the file will be about at a right angle with a slot, D, which is formed between the plates A B by recessing their opposing faces, and into which slot the saw-blade E enters to allow the file C to act on the teeth *e* of the blade. At their central parts the plates A B are provided with lugs F G, respectively, which lie one at each face of the saw-blade and serve as guides to prevent slipping of the device from the blade, although these lugs are not essential, as the recess D, which extends for the full length of the body portions of the plates A B, for a half-inch or more beyond the acting face of the file, would alone guide the jointer when used with care; but the guide-lugs F G allow the device to be used more confidently by inexperienced persons. One of the plates—the one, B, for in-

stance—is provided with a locking projection, preferably in the form of a hook, H, which may be passed through a slot, I, made in the opposite plate, A, whereupon one or both plates will be moved endwise to cause the hook to lock over or outside of the outer face of the plate A, and thereby clamp the plates A B together and fasten the file C securely between the plates. Directly underneath the bill of the hook H the plate B is slotted at *h* to allow the plate to be readily cast in suitable metal without setting a core to form the hook, and this slot *h* also forms a hole for entrance of the thumb or finger for more conveniently sliding the plates A B endwise to engage or disengage the hook H and allow the plates to be separated when the file is to be turned to present a new or sharper face or side of it to the saw-teeth to be jointed.

The operation of the device is very simple and effective, as the jointer A B C has but to be slipped onto the saw-blade E, and by working the device backward and forward along and over the blade the file will level the saw-teeth *e*, which may afterward be filed to a point, thereby causing each tooth of the saw to do its full duty and promoting quick and easy cutting action of the saw, as will readily be understood.

I purpose making the file C straight and especially for use in the jointer, thus assuring the maximum efficiency of the whole device.

Having thus described my invention, what I claim as new, and desire to secure by Letters Patent, is—

1. A saw-jointer comprising the two plates recessed on their inner adjacent faces to form saw and file receiving spaces, and provided, respectively, with a slot and a locking projection engaging the same, whereby the plates may be readily assembled or disconnected, substantially as set forth.

2. A saw-jointer comprising two plates, A B, formed with opposite inclined faces, *a b*, and recessed to provide a slot, D, between them to receive a saw-blade, and also to receive a triangular file, and one plate having a hook, H, and the other plate formed with a slot, I, admitting the hook for locking the plates together, substantially as shown and described.

CHARLES RUFUS BLACK.

Witnesses:

JNO. C. TULLOCH,
E. RINEHART.