

(No Model.)

2 Sheets—Sheet 1.

A. MEYER.
WICK TRIMMER.

No. 382,050.

Patented May 1, 1888.

Fig.1.

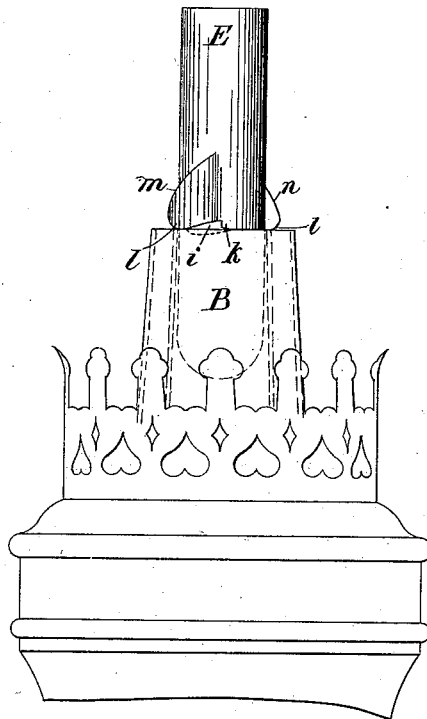


Fig.2.

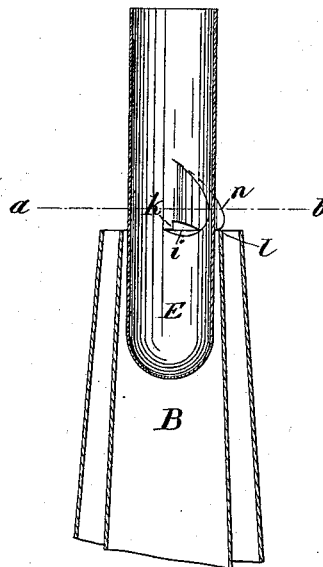


Fig.3.

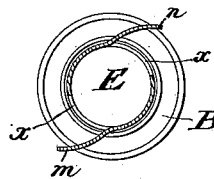


Fig.4.

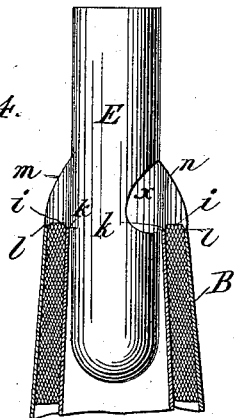
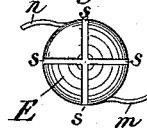


Fig.5.



Witnesses:
Joseph W. Roe.
O. Lundgren.

Inventor:
August Meyer.
By Attorneys
Brown & Hall.

(No Model.)

2 Sheets—Sheet 2.

A. MEYER.
WICK TRIMMER.

No. 382,050.

Patented May 1, 1888.

Fig. 6.

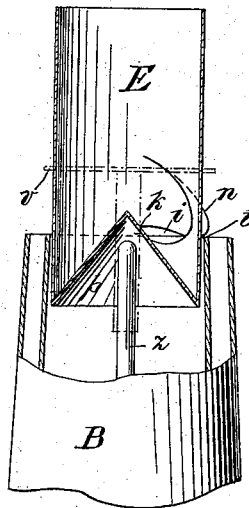


Fig. 7.

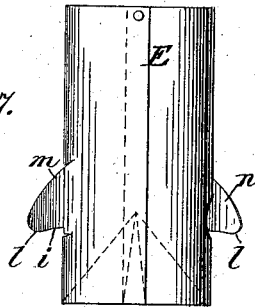
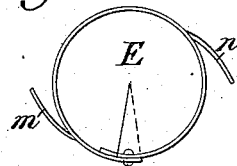


Fig. 8.



Witnesses:

Joseph W. Roe,
O. Sundgren.

Inventor:

August Meyer,
By attorney,
Frownt Hall.

UNITED STATES PATENT OFFICE.

AUGUST MEYER, OF HAMBURG, GERMANY.

WICK-TRIMMER.

SPECIFICATION forming part of Letters Patent No. 382,050, dated May 1, 1888.

Application filed November 11, 1887. Serial No. 254,893. (No model.) Patented in Belgium July 2, 1887, No 73,054.

To all whom it may concern:

Be it known that I, AUGUST MEYER, a subject of the Emperor of Germany, residing at the city of Hamburg, in the German Empire, have invented an Improved Wick-Cleaner for Cleaning or Trimming Cylindrical Burner-Wicks, for which I have obtained a brevet for the Kingdom of Belgium, No. 78,054, dated July 2, 1887, of which the following is a specification, reference being had to the accompanying drawings.

My improved wick-cleaner consists of a metal tube open at the top and closed at the bottom, of a caliber to pass into the inner tube of a cylindrical lamp-burner, and having provided in it lateral openings and being furnished near said openings with externally-projecting wings adapted to bear on the top of the burner-tubes, said wings having provided in their lower edges, between the parts which are to bear on the burner-tubes, recesses of a depth and form corresponding with the height which the wick is desired to project above the said tubes and with a transverse sectional profile of the so projecting part. By placing the tube in the central tube of the burner with the lower edges of its wings resting on the top of the wick and then turning the tube the wings are caused to scrape off the carbonized portion of the wick and trim its upper edge above the wick-tube to the proper height and form, carrying the trimmings or scraped-off portions into the close-bottomed tube, wherein they are thus collected. In order to adapt the cleaner to cylindrical burners of different sizes, its close-bottomed tube may be longitudinally slit to enable it to be compressed and contracted according to the size of the wick-tube.

Figure 1 in the accompanying drawings is a side elevation of a lamp-burner and of my wick-cleaner inserted therein. Fig. 2 is a central vertical sectional view of the burner-tubes and of the wick-cleaner therein. Fig. 3 represents a horizontal sectional view, the section being taken in the line *a b*, Fig. 2. Fig. 4 exhibits a central vertical section of the burner-tubes and of the wicks therein and a side view of the wick-cleaner. Fig. 5 is an inverted plan view of the wick-cleaner. Fig. 6 is a vertical sectional view of a burner and wick cleaner, illustrating a modification of my invention. Fig. 7 is a side view of the wick-

cleaner, corresponding with Fig. 6. Fig. 8 is a plan or top view corresponding with Fig. 7.

Similar letters of reference indicate corresponding parts in the several figures.

E, Figs. 1, 2, 3, 4, 5, designates the metal tube of the wick-cleaner, which is open at the top and closed at the bottom and the exterior of which corresponds in diameter to the opening of the burner-tube B. From the wall of this tube E project outwardly two wings, *m n*. These wings stand vertically or nearly so from the rim or upper edge of the burner-tube when the tube E of the cleaner is placed in the burner, as shown in Figs. 1, 2, and 3, and penetrate into that part of the wick which projects above the burner-tube without pressing the said part flat. In the lower edge, *k l*, of each wing is provided, between the parts *k l*, which bear on the burner-tubes, a recess, *i*, that corresponds in shape to that part of the wick that has to project above the burner-tube for obtaining a normal-size flame when the lamp is lighted. In front of each wing there is an opening, *x*, into the tube.

The operation of the cleaner is effected after placing the cleaner in the burner, as above described, by turning the tube E, the wings *m n* of which shave off the projecting edges of the wick so far that without any further adjustment of the wick the lamp will be ready for lighting. The shaved-off particles are conducted by the wings into the tube through the openings *x x*, and the said particles are subsequently removed after the cleaner has been taken out of the wick-tube or burner.

To adapt the cleaner to be employed for burners which are slightly different in the diameter of the wick-tube, the tube E may be slit transversely and longitudinally, as shown in Fig. 5, at *s s*, so that it can be slightly compressed and contracted, and thus used for different burner-tubes.

Figs. 6, 7, and 8 illustrate a modification in which the bottom of the tube E is formed in shape of a cone to produce a hollow or recess, *p*, extending into the inner part of the tube. The hollow *p* allows of applying the cleaner to burners furnished with central buttons for spreading the flame, as is shown in dotted lines in Fig. 6 of the drawings. The button *v* is generally fastened to a projecting pin, *z*, and this pin can enter into the hollow *p* of the

tube-bottom when the button *v* itself has been removed for the purpose of cleaning. The tube *E* can with this construction likewise be made contractile, while otherwise the construction is the same as that of Figs. 1 to 5.

What I claim as my invention, and desire to secure by Letters Patent, is—

1. The combination, with a tube closed at the bottom and furnished with lateral openings, of wings for bearing on the top of the tubes of a lamp-burner, said wings being provided in their lower edges, between the parts which are to bear on the latter tubes, with recesses of a depth and form corresponding with the height which the wick is desired to project above the said tubes and with the transverse sectional profile of the so-projecting part, sub-

stantially as and for the purpose herein described.

2. The wick-cleaner consisting of the slit contractile close-bottomed tube *E*, having openings *x x* and wings *m n*, substantially as herein described.

3. The wick-cleaner consisting of a tube, *E*, having a conical recess in the exterior of its bottom, having openings *x x* in its sides, and having wings *m n*, substantially as described, and explained by the accompanying sheet of drawings.

AUGUST MEYER.

Witnesses:

F. ENGEL,

H. WITT.