

(No Model.)

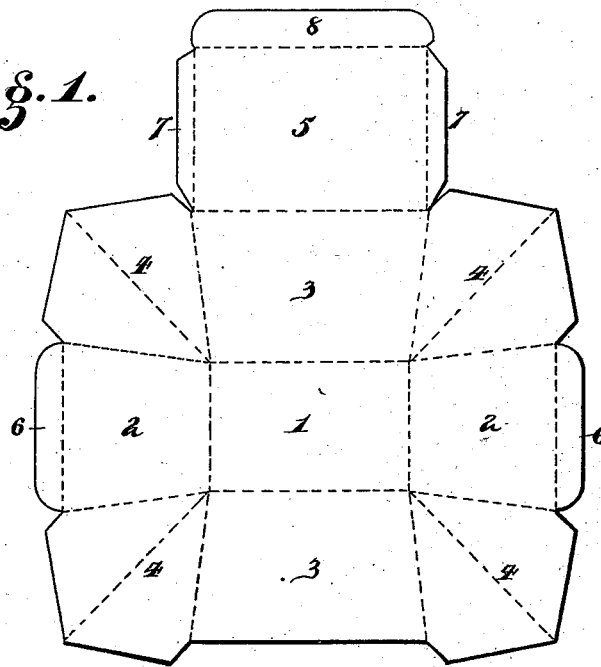
T. F. W. SCHMIDT.

PAPER VESSEL.

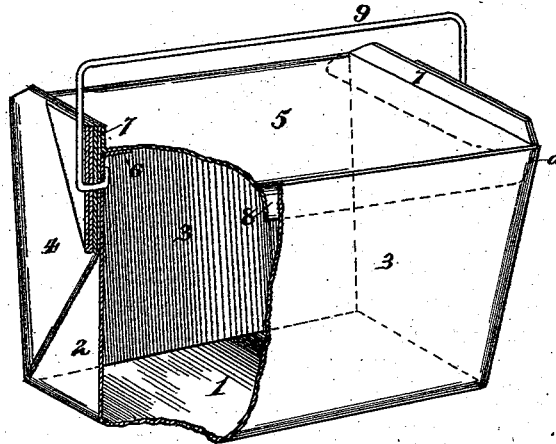
No. 382,559.

Patented May 8, 1888.

*Fig. 1.*



*Fig. 2.*



*Attest.*

*J. Watson Sims.*  
*W. C. Millikan*

*Inventor.*

*Theodore F. W. Schmidt*  
*by Wood & Bond*  
*his Attorneys*

# UNITED STATES PATENT OFFICE.

THEODORE F. W. SCHMIDT, OF DAYTON, OHIO, ASSIGNOR OF ONE-HALF TO  
LAUBACH & IDDIGS, OF SAME PLACE.

## PAPER VESSEL.

SPECIFICATION forming part of Letters Patent No. 382,559, dated May 8, 1888.

Application filed February 16, 1888. Serial No. 264,182. (No model.)

*To all whom it may concern:*

Be it known that I, THEODORE F. W. SCHMIDT, of Dayton, in the county of Montgomery and State of Ohio, have invented certain new and useful Improvements in Paper Vessels, of which the following is a specification.

The object of my invention is to make a paper vessel suitable for holding ice-cream, having the cover made of one piece, suitably supported to one side of the box, and fastening by a tucking flap, the features of which will be more fully described in the description of the accompanying drawings, making a part of this specification, in which—

Figure 1 represents the blank, which is bent as indicated by dotted lines. Fig. 2 is a perspective view with one corner broken away, showing a vertical central section of one end.

In the blank, Fig. 1, 1 represents the bottom of the box; 2 2, the side pieces; 3, the back and front sides; 4, the bent corners, forming the ears for supporting the bail, in the manner described in Letters Patent No. 358,411, dated February 22, 1887. 5 represents the lid. These different sections are creased or scarfed, so as to be readily bent to form a close vessel.

In carrying ice-cream and similar substances it is very desirable to support the lid below the upper edges of the ears 4 and sides 3; and to accomplish this I bend inwardly the top

edges of the ends 2, so that the flaps 6 are provided and stand some little distance below the top edges of the said ears and sides. These flaps 6 form a support for the lid and prevent the escape of material out between the edges of the lid and the edges of the box, making a tighter as well as a stronger vessel. As an additional safeguard, I sometimes provide on the lid upturned flaps 7, which rest against the end of the box and make it more secure.

8 represents a downwardly-projecting flap, which tucks in between the ends 2 and the front side of the box. The flaps 6 assist in holding the lid fast between them and the front 3, which is indicated by dotted lines *a*, Fig. 2.

Having described my invention, what I claim is—

A paper vessel comprising a blank creased and bent to form the bottom 1, ends 2, sides 3, and lid 5, having the flap 8, for fastening it in a closed position, said ends having their top edges turned inward below the top edges of the ears and sides to support the lid below said ears and ends, substantially as described.

In testimony whereof I have hereunto set my hand.

THEODORE F. W. SCHMIDT.

Witnesses:

WILLIAM H. RUSSELL,  
JAMES AKIN.