

(Model.)

S. M. GRISWOLD.  
HANDKERCHIEF HOLDER.

No. 382,805.

Patented May 15, 1888.

Fig. 1.

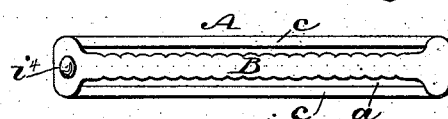


Fig. 2.

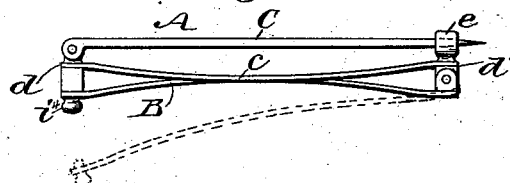


Fig. 3.

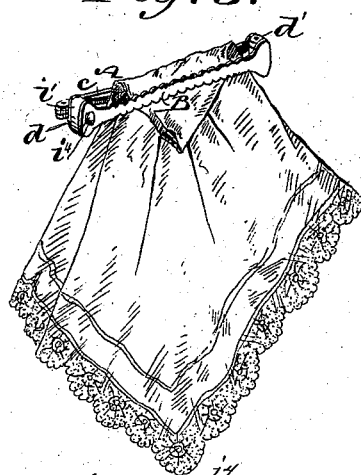
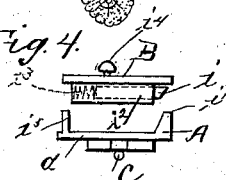


Fig. 4.



WITNESSES:

*John H. Coomer*  
*C. S. S. S. S.*

INVENTOR:

*S. M. Griswold*  
BY *Munn & Co.*  
ATTORNEYS.

# UNITED STATES PATENT OFFICE.

STEPHEN M. GRISWOLD, OF BROOKLYN, NEW YORK.

## HANDKERCHIEF-HOLDER.

SPECIFICATION forming part of Letters Patent No. 382,805, dated May 15, 1888.

Application filed September 21, 1887. Serial No. 250,304. (Model.)

*To all whom it may concern:*

Be it known that I, STEPHEN M. GRISWOLD, of Brooklyn, in the county of Kings and State of New York, have invented a new and Improved Handkerchief-Holder, of which the following is a full, clear, and exact description.

The object of my invention is to provide a handkerchief-holder in the form of a brooch, with a pin, designed to be attached to a lady's dress for holding a handkerchief, as in a clasp, so that when made in gold or silver or other material and of handsome design the device furnishes an attractive ornament, while serving at the same time a useful purpose.

Reference is to be had to the accompanying drawings, forming a part of this specification, in which similar letters of reference indicate corresponding parts in all the figures.

Figure 1 is a front elevation of my new handkerchief-holder. Fig. 2 is an edge view of the same, and Fig. 3 is a perspective view of the holder as it appears when clasp ing a handkerchief. Fig. 4 is an end elevation of the holder, showing the fastening for holding the clasp-bar to the main frame.

The handkerchief-holder is composed mainly of the main frame A, and the clasp ing-bar B, hinged to the main frame and adapted to close into the space *a* of the main frame for clasp ing the handkerchief without danger of tearing, cutting, or otherwise injuring it.

The main frame A is composed of the side bars, *c c*, united by the end pieces, *d d'*. To the end piece, *d*, is hinged the pin C, by which the holder may be attached to a garment, and to the end piece, *d'*, is secured the keeper or hook *e*, for holding the sharp end of the pin, as shown in Fig. 2. The clasp ing-bar B is hinged to the end piece, *d'*, or to the adjacent ends of the side pieces, *c c*, and is provided at its free end with a spring-actuated fastening-bolt, *i*, to engage with the catch *i'*, secured to the end of the main frame A, for holding the clasp ing-bar in closed position upon the hand-

kerchief. The bolt *i* is held in a sleeve, *i<sup>2</sup>*, in which is placed the spring *i<sup>3</sup>*, and attached to the bolt is the knob *i<sup>4</sup>*, which works in a slot, by which the bolt may be withdrawn from the catch *i'* for releasing the bar B. A projection, *i<sup>5</sup>*, holds the bar B from lateral movement away from the catch *i'* when the said bar is closed, as will be understood from Fig. 4.

The clasp ing-bar B is made somewhat narrower than the space between the side bars, *a*, and it is curved in the center toward the main frame A, so that it has a spring action upon the handkerchief, so that when closed upon the handkerchief it not only presses a portion of the handkerchief between the bars *a a*, but also clasps it, as by a spring-clasp.

Having thus fully described my invention, I claim as new and desire to secure by Letters Patent—

1. As a new article of manufacture, a handkerchief-holder constructed substantially as herein shown and described, the same consisting of a main frame, a pin for fastening the same to a garment, and a clasp ing-bar hinged to the main frame for clasp ing a handkerchief between said bar and the main frame, substantially as set forth.

2. The main frame A, formed of spaced side bars, *c c*, and end pieces, *d d'*, in combination with the pin C, clasp ing-bar B, hinged to the main frame, and a fastening device for the clasp ing-bar, substantially as described.

3. The main frame A, provided with a pin, C, in combination with the clasp ing-bar B, hinged to the main frame and bent inward toward the main frame to form a spring, substantially as described.

4. The main frame A, composed of the spaced side bars, *c c*, end pieces, *d d'*, pin C, and hinged clasp ing-bar, made narrower than the space between the bars *c c*, substantially as described.

STEPHEN M. GRISWOLD.

Witnesses:

H. A. WEST,  
C. SEDGWICK.