

(No Model.)

3 Sheets—Sheet 1.

E. W. ANTHONY.
STOVE OR RANGE.

No. 382,851.

Patented May 15, 1888.

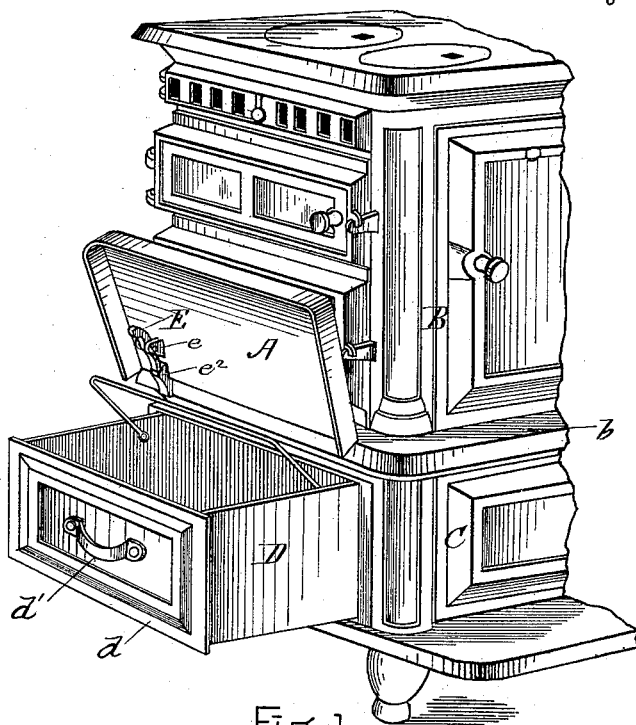


Fig. 1.

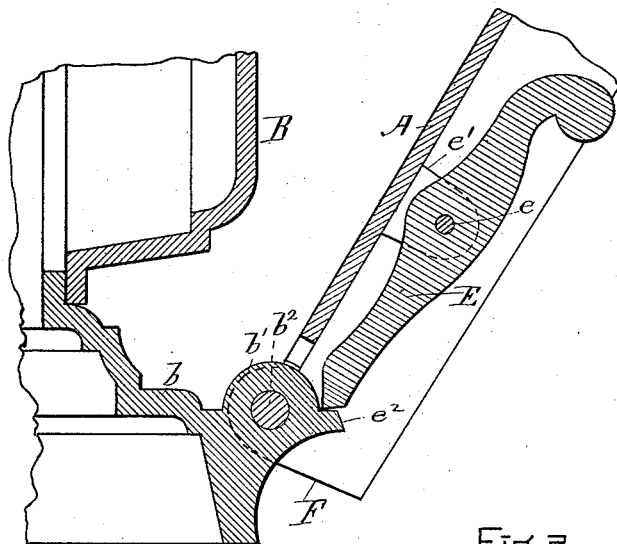


Fig. 2.

WITNESSES.

J. W. Dolan.
Fred. B. Dolan.

INVENTOR.

Edgar W. Anthony,
by his attys
Charles & Raymond.

(No Model.)

3 Sheets—Sheet 2.

E. W. ANTHONY.
STOVE OR RANGE.

No. 382,851.

Patented May 15, 1888.

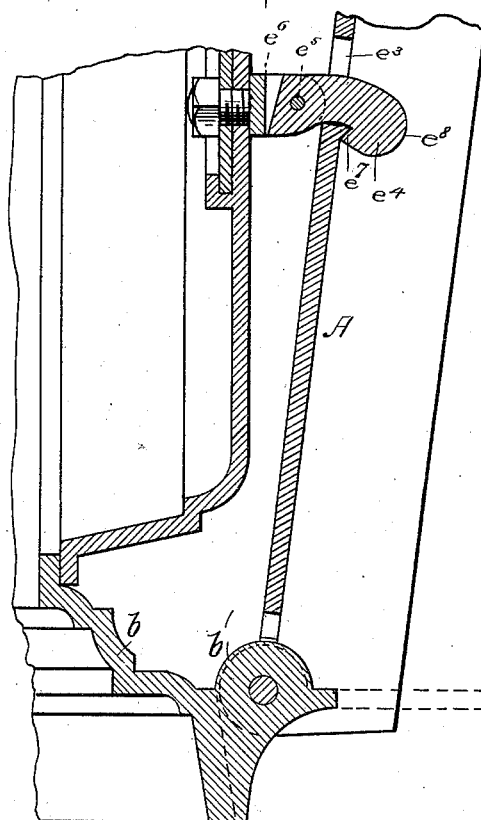
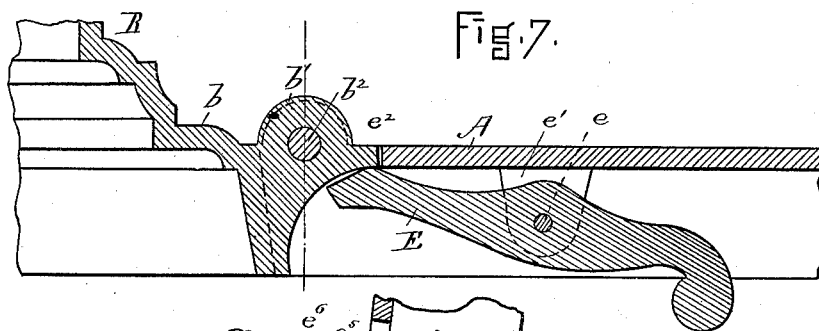
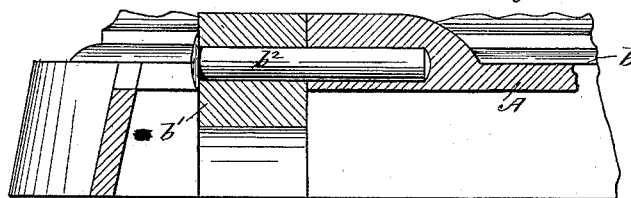


Fig. 3.

Fig. 4.

WITNESSES.

J. M. Dolan.

Fred. B. Dolan.

INVENTOR.

Edgar W. Anthony,
by his atty.
Clark & Raymond.

(No Model.)

3 Sheets—Sheet 3.

E. W. ANTHONY.
STOVE OR RANGE.

No. 382,851.

Patented May 15, 1888.

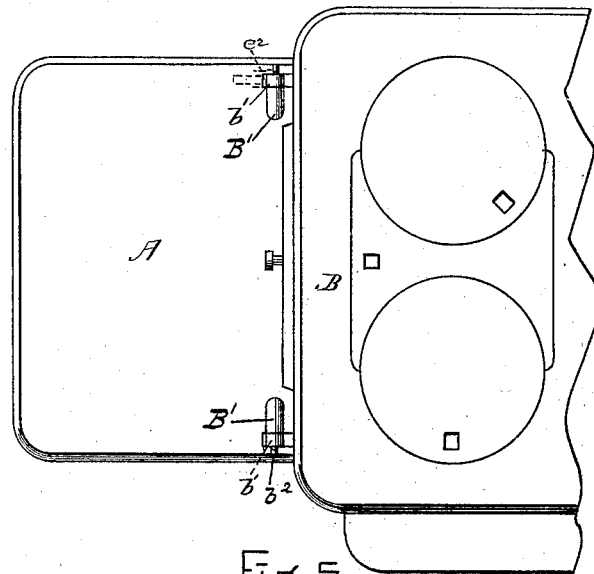


Fig. 5.

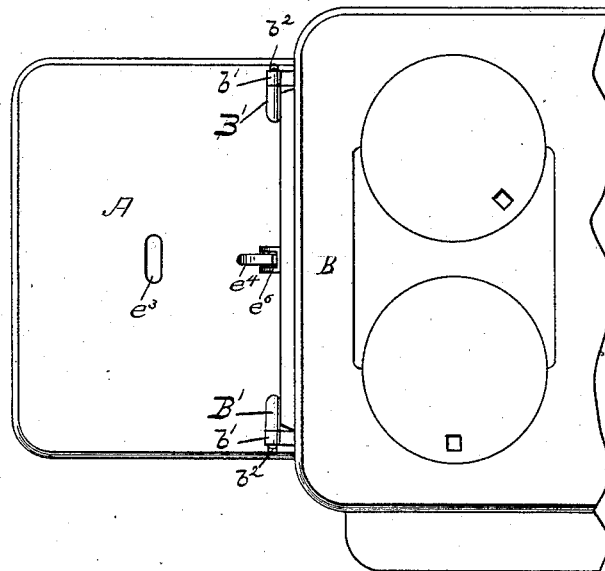


Fig. 6.

WITNESSES.

J. W. Dolan.
Fred. B. Dolan.

INVENTOR.

Edgar W. Anthony.
by his attorney
Charles F. Fitzgerald

UNITED STATES PATENT OFFICE.

EDGAR W. ANTHONY, OF BROOKLINE, MASSACHUSETTS.

STOVE OR RANGE.

SPECIFICATION forming part of Letters Patent No. 382,851, dated May 15, 1888.

Application filed October 7, 1886. Serial No. 215,533. (No model.)

To all whom it may concern:

Be it known that I, EDGAR W. ANTHONY, of Brookline, in the county of Norfolk and State of Massachusetts, a citizen of the United States, have invented a new and useful Improvement in Stoves or Ranges, of which the following is a full, clear, and exact description, reference being had to the accompanying drawings, forming a part of this specification, in explaining its nature, in which—

Figure 1 is a view in perspective of the end of a range illustrating the features of my invention. Fig. 2 is a view in vertical section, enlarged, to further illustrate the construction and operation thereof. Fig. 3 is a view on the same section represented in Fig. 2, showing the parts, however, in a different position. Fig. 4 is a vertical section illustrating a slight modification in construction, which will hereinafter be referred to. Fig. 5 is a plan view of a portion of the stove, showing the hearth-plate in horizontal position and illustrating the position of the latch represented in Figs. 1, 2, and 3. Fig. 6 is also a plan view of a portion of the stove and the hearth-plate in a horizontal position, and shows the position of the latch represented in Fig. 4. Fig. 7 is a detail view, principally in vertical section, upon the vertical dotted line of Fig. 3.

The invention relates to the class of stoves or ranges either with or without cabinet-bases or base-sections, using or employing an end portion of such stove or base for holding an ash-pan, which is removed through the end thereof, and comprises a hearth-plate hinged to said end of the stove, adapted to be moved upward to a perpendicular or substantially perpendicular position, and an automatic latching or locking device for locking the hinged plate in its raised position. This enables the plate to be moved out of the way when it is desired to open the chamber or compartment holding the ash-pan and remove it therefrom.

In the drawings I have shown the invention applied to a range having a cabinet-base, and A represents the hearth-plate; B, the range or stove; C, the cabinet-base or base-section; D, the ash-pan. The hearth-plate A is pivoted to the base-plate *b* at its inner edge, the base-plate having the lugs or extensions *b'* and hearth-plate the sections *B'* to receive the pivots *b''*.

For automatically latching the plate in an elevated position there may be used the latch E, pivoted at *e* to lugs *e'*, extending downward from the under surface of the plate A, and adapted to engage the rest *e''*, extending from one of the lugs *b'*; or there may be formed in the plate A a hole, *e''*, to receive the latch *e'*, which is connected by a horizontal pivot, *e''*, with a block, *e''*, attached to a slide in the door to the ash-pit. This latch *e'* has a shoulder, *e'*, which is adapted to engage the under surface of the plate after the plate has been lifted sufficiently to cause its end to enter the hole *e''*. This latch is so weighted that it automatically engages the plate, and it has a rounded surface or corners, *e''*, so that it is guided to the hole as the plate is lifted. This latch *e'*, it will be seen, serves not only as a device for holding the plate lifted, but also as a handle or knob for the said slide. Instead of being attached to a slide, it may be secured to a door or to any other part of the end of the stove. Both of these devices are adapted to operate by hand or by foot, it being simply necessary to touch the outer end of either and move it inward or upward to cause it to release the plate, which then falls to place.

The plate is held in a horizontal position by means of the inner edges, F, of the side flanges of the plate, which are adapted to come in contact with the front surface of the flange of the base-plate.

The ash-pan D has a front plate, *d*, which also forms the front plate of the base-section of the stove, and to it is secured a handle, *d'*, by which the ash-pan is drawn from its compartment. It will thus be seen that the front plate, *d*, serves as a part of the ash-pan, and also as a finishing-plate to the stove, and that this does away with the necessity of a separate door to the ash-pit, and renders the removal of the ash-pan more expeditious and easy upon the lifting of the hearth-plate A to a perpendicular position.

Having thus fully described my invention, I claim and desire to secure by Letters Patent of the United States—

1. In a cooking stove or range having an entrance to a compartment under the hearth-plate, a movable hearth-plate hinged to the base-plate or end of the stove, and a latch or lock for holding it to the end of the stove in a

perpendicular position, substantially as described.

2. In a stove or range having an entrance to a compartment under the hearth-plate, the
5 combination of the hinged hearth-plate A, the said compartment, and an ash-pan, D, adapted to be held in said compartment, and having the front plate, *d*, which forms the front plate of the base of the stove, and its handle *b'*, as
10 and for the purposes specified.

3. In a stove or range, the combination of the base-plate *b*, or end of the stove or range, the hearth-plate A, and a latch adapted to automatically hold the plate when lifted to a perpendicular position, substantially as described. 15

EDGAR W. ANTHONY.

Witnesses:

F. F. RAYMOND, 2d,
J. M. DOLAN.