

(No Model.)

W. S. RICHARDSON.

FASTENING FOR GLOVES.

No. 383,072.

Patented May 15, 1888.

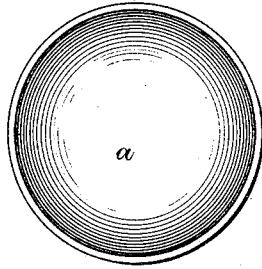


Fig. 1.

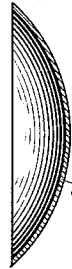


Fig. 2.

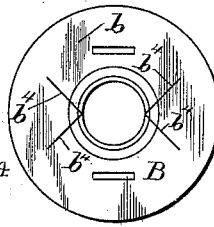


Fig. 3.

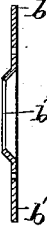


Fig. 4.

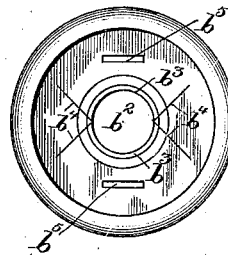


Fig. 5.

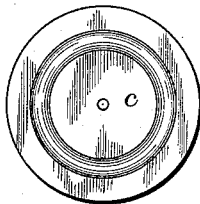


Fig. 6.



Fig. 7.

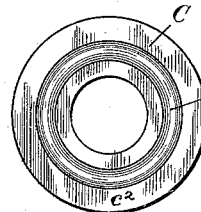


Fig. 8.

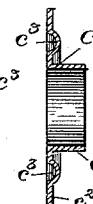


Fig. 9.

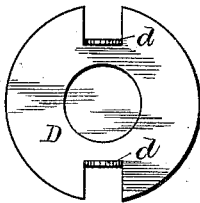


Fig. 10.

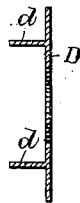


Fig. 11.

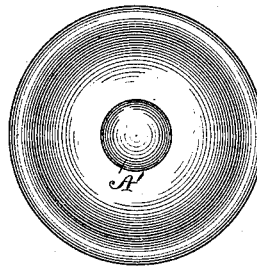


Fig. 12.

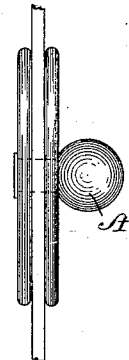


Fig. 13.

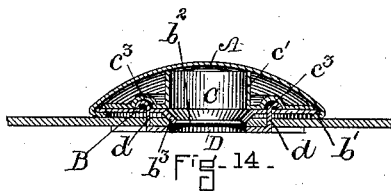


Fig. 14.

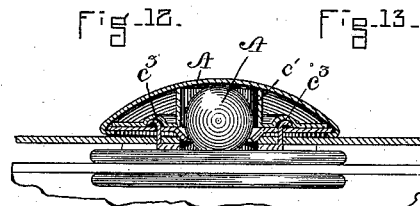


Fig. 15.

WITNESSES.

J. W. Dolan.

E. P. Small.

INVENTOR.

W. S. Richardson,
by his atty
Clark & Raymond.

UNITED STATES PATENT OFFICE.

WILLIAM S. RICHARDSON, OF BOSTON, MASSACHUSETTS.

FASTENING FOR GLOVES.

SPECIFICATION forming part of Letters Patent No. 383,072, dated May 15, 1888.

Application filed January 23, 1888. Serial No. 261,647. (No model.)

To all whom it may concern:

Be it known that I, WILLIAM S. RICHARDSON, of Boston, in the county of Suffolk and State of Massachusetts, a citizen of the United States, have invented a new and useful Improvement in Fastenings for Gloves and other Articles, of which the following is a full, clear, and exact description, reference being made to the accompanying drawings, forming a part of this specification in explaining its nature.

The invention is an improvement upon the construction of fastening described and claimed in my application, Case C, Serial No. 261,646, of even date herewith.

In the drawings, Figures 1 and 2 show, in plan and section, the dome or button-top. Figs. 3, 4, and 5 relate to the jaw-plate. Figs. 6, 7, 8, and 9 relate to the stay-piece; Figs. 10 and 11 to the under washer; Figs. 12 and 13 to the ball, stud, or post member of the fastening. Fig. 14 is a sectional view illustrating the member of the fastening to which this invention relates as secured to the material. Fig. 15 shows the fastening in operative position, with a ball, post, or stud.

The fastenings comprise a dome or button-top, A, an independent jaw-plate, B, fastened or secured by its edge to the dome or button-top, the stay-piece C, having an annular groove or cup-shaped depression in the flange close to the sleeve thereof, and a fastening or securing device comprising a washer having fastening extensions or parts which are adapted to be passed through the material and holes or recesses in the jaw-plate, and to be upset or turned in the said annular recess or cup-shaped depression of the stay-piece.

The dome A is formed from the circular blank *a* in suitable dies. The jaw-plate B is formed from the blank *b*, (shown in Fig. 3,) and has the flange *b'*, the opening *b''*, the jaws *b'''*, formed by the slits *b''''*, extending from the opening, and the holes or recesses *b''''''*. The stay-piece C is made from the blank *c*, and has a sleeve or staying piece or extension, *c'*, flange *c''*, and the annular depression or cup-shaped recesses *c'''*—that is, I mean that the recess may extend entirely around the plate, or it may be confined to two opposite points and in line with the holes *b''''''* of the jaw-plate.

The parts are assembled by first placing the stay-piece in the cavity of the dome or button-top, then placing the jaw-plate next it, and then turning the edge or sections of the

edge of the dome or button-top upon the under surface of the jaw-plate. This will produce a fastening having provision for receiving and turning the ends of the fastening prongs or projections carried by a washer or other fastening device. The cup-shaped recesses or depressions *c'''* form prong or fastening turning dies, and the upper surface of the jaw-plate adjacent to the opening *b''* therein receives the turned-in ends of the prongs or fastenings.

A washer, D, having the prongs or extensions *d*, is represented in Figs. 10 and 11, and to secure the fastening in place a hole is first formed in the material, the fastening placed over the same, the prongs of the washer passed through the material from the opposite side thereof and caused to enter the holes *b''* of the jaw-plate, and to be turned or upset thereon by the metal of the stay-piece forming the turning-recess *c'''*. This construction is adapted for use where the thickness of the material to which the fastening is to be applied varies, and it also is an improvement in that it forms an under finish which is entirely smooth or without projections thereon.

In use the fastening is placed so that the jaw-opening registers with the ball, post, or stud A', and by the movement of one in relation to the other the two parts are brought together to assume the position in relation to each other represented in Fig. 15.

Having thus fully described my invention, I claim and desire to secure by Letters Patent of the United States—

1. A fastening for gloves and other articles, consisting of the dome or button-top A, the jaws *b'''*, having the holes or recesses *b''''''*, the stay-piece C, having the prong-turning depressions *c'''*, and the washer D, having the prongs or fastening-extensions *d*, substantially as described.

2. In a fastening for gloves and other articles, the combination of the dome or button-top A, the jaw-plate having the opening *b''*, jaws *b'''*, and the openings or recesses *b''''''*, with a stay-plate, C, having the prong-turning depressions *c'''*, and the washer D, having the prongs *d*, substantially as described.

WILLIAM S. RICHARDSON.

In presence of—

F. F. RAYMOND, 2d,

E. P. SMALL.