

(No Model.)

N. CLEMENT.
BUCKLE.

No. 383,102.

Patented May 22, 1888.

Fig. 1.

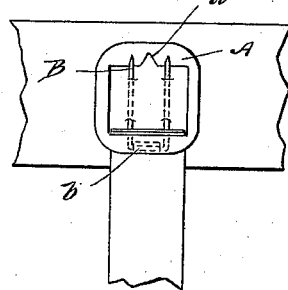


Fig. 2.

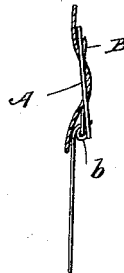


Fig. 3.

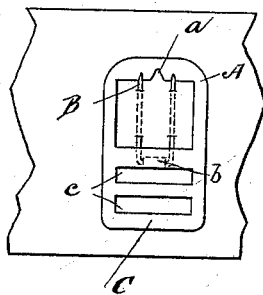


Fig. 4.

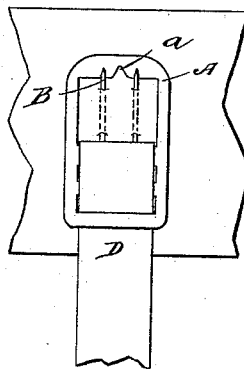


Fig. 5.

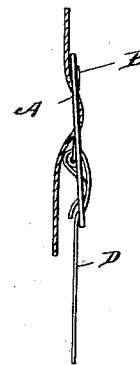
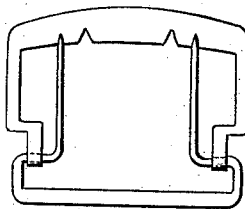


Fig. 6.



Witnesses,

J. M. Mann,
Frederick Goodwin

Inventor,

Nelson Clement.
By, *Offield & Sons.*

Atty's,

UNITED STATES PATENT OFFICE.

NELSON CLEMENT, OF CHICAGO, ILLINOIS.

BUCKLE.

SPECIFICATION forming part of Letters Patent No. 383,102, dated May 22, 1888.

Application filed March 19, 1888. Serial No. 267,666. (No model.)

To all whom it may concern:

Be it known that I, NELSON CLEMENT, a citizen of the United States, residing at Chicago, in the county of Cook and State of Illinois, have invented a certain new and useful Improvement in Apparel-Buckles, which I desire to protect by Letters Patent of the United States, and of which the following is a specification.

The object of my invention is to provide a buckle which can be attached to any portion of a garment, it being unimportant whether an edge of the garment be presented to receive the buckle or not, and all fastening-tapes or buttons being dispensed with. The buckle is particularly adapted to be used to support hosiery from a waistband, and can be so employed in lieu of the metallic loops in common use for supporting such articles, and with which loops it is necessary to use buttons upon the supporting-band.

My invention consists in the improved buckle hereinafter described, and particularly pointed out in the claims.

In the accompanying drawings, Figure 1 illustrates in side elevation my improved buckle applied transversely to a piece of cloth and having connected thereto a tape or second piece of cloth. Fig. 2 is a sectional side elevation of the parts shown in Fig. 1. Fig. 3 shows the buckle applied and provided with an extension having transverse slits or openings convenient to attach one or more straps or tapes. Fig. 4 is the same device, but with the tape applied. Fig. 5 is a sectional elevation of the parts shown in Fig. 4; and Fig. 6 shows a modification of the buckle illustrated in the other figures, the buckle shown in this figure being wider than the others, and the modification consisting in the omission of one side of the buckle-frame and provision of two tongue-slots, instead of one, as shown in the other figures.

In said drawings, A represents the buckle, which consists of a rectangular frame. This frame may be constructed of any suitable material, preferably of a light brass or tin plate. On one bar of this frame, as shown in Figs. 1 to 5, inclusive, is hinged a tongue, B. This tongue I prefer to make of a single piece of pin-wire, pointed at each end and bent into a

U form. The bow part of the tongue serves to form the axis upon which it swings. The tongue may be secured upon the buckle-frame in any convenient manner, preferably by forming a lip or flange, *b*, in the blank, which is turned over and made to embrace the bow of the tongue. The tongue, as above indicated, is constructed of a flexible wire, so that its points may be compressed or forced together. In the bar of the buckle, opposite the pivot of the tongue, I provide a notch or slit, *a*, which may be V-shaped, as shown, and this notch is preferably formed midway between the free ends of the tongue.

When it is desired to apply this buckle, the tongues are inserted through the material to which it is to be applied, and then the free ends are squeezed together and passed through the notch *a*. When released, they will spring apart, so that their free ends shall rest upon the solid portion of the bar on either side of the slot, and so remain until again compressed and forced through the slot in the operation of removing the buckle.

From the foregoing description it will be apparent that this buckle may be applied to any portion of the piece of cloth, and that it needs no sewing, straps, or buttons to secure it thereto.

In Figs. 3, 4, and 5 the buckle is shown provided with an extension, C, having transverse openings or slots *c*, and Fig. 5 shows the purpose of said extension and slots. The tape D therein shown, being passed through the lower slot from the under side of the buckle and pierced by the tongues, returns through the upper slot from the inner side, and again passes through the lower slot to the inner side, whereby it is securely fastened without sewing. It is not essential, however, to the operation of my buckle previously described that it should be provided with this extension.

Where a wide buckle is used, and it is inconvenient to place the buckle-tongues near enough together so that their free ends shall pass through the same notch or slot, I may provide two of such notches, as represented in Fig. 6, and it is also obvious that the buckle-tongues, instead of the U shape shown in Figs. 1 to 5, inclusive, may be of the modified form shown in Fig. 6, and that the frame of the

buckle, while rectangular in its outlines, has the lower bar of the frame omitted, the end bars of the buckle being looped around the tongues to pivot them therein; but this I regard as falling within the scope of my invention.

I claim—

1. A buckle comprising a frame having pivotally secured to one side thereof a double flexible tongue, and having a slot or opening in the bar of the buckle opposite the pivot of the tongue and adjacent to its ends, whereby to permit the passage of the tongue from one side of the frame to the other, substantially as described.

2. In a buckle, the combination of a frame,

A, and a double flexible tongue formed of a single wire pointed at each end and bent into a U form, pivotally secured to one side of the frame, said frame having a notch or opening, *a*, to permit the passage of the tongues from one side of the frame to the other, substantially as described.

3. In a buckle, the combination of a frame, A, provided with notch *a*, tongue B, pivotally secured thereto, and extension C, having transverse slots *c* in said extension, substantially as described.

NELSON CLEMENT.

Witnesses:

GEORGE RAYMOND,
C. C. LINTHICUM.