

(No Model.)

W. SIMMONDS.
WINDOW BLIND FASTENER.

No. 383,596.

Patented May 29, 1888.

Fig. 1

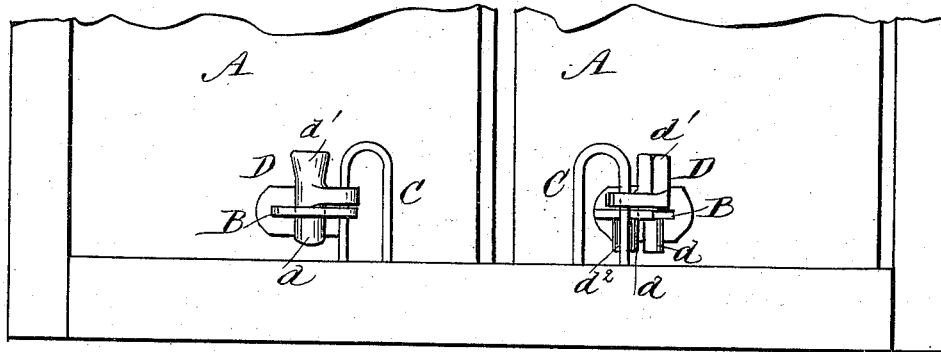


Fig. 2

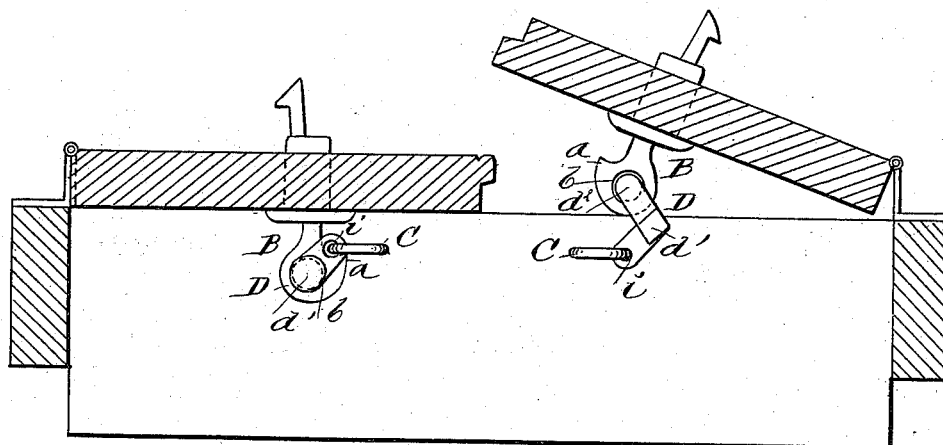


Fig. 3

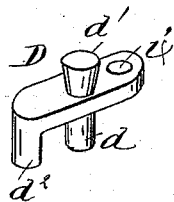
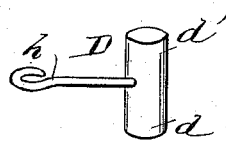


Fig. 4



WITNESSES:

C. Neveu
C. Sedgwick

INVENTOR:

W. Simmonds

BY *Munn & Co*

ATTORNEYS.

UNITED STATES PATENT OFFICE.

WILLIAM SIMMONDS, OF YONKERS, NEW YORK.

WINDOW-BLIND FASTENER.

SPECIFICATION forming part of Letters Patent No. 383,596, dated May 29, 1888.

Application filed June 25, 1887. Serial No. 242,476. (No model.)

To all whom it may concern:

Be it known that I, WILLIAM SIMMONDS, of Yonkers, in the county of Westchester and State of New York, have invented a new and Improved Window-Blind Fastener, of which the following is a full, clear, and exact description.

The object of my invention is to provide a cheap, practical, and convenient device to be applied to window-blinds, whereby they may be locked in closed position or held partially open; and the invention consists of the construction, arrangement, and combination of parts, all as hereinafter described and claimed.

Reference is to be had to the accompanying drawings, forming a part of this specification, in which similar letters of reference indicate corresponding parts in all the figures.

Figure 1 is a front elevation of a window-frame and window-blinds having my invention applied thereto, showing one blind closed and locked, the other held partly open. Fig. 2 is a sectional plan view of the same. Fig. 3 is a perspective view of one form of the fastener removed, and Fig. 4 shows a modified form of fastener.

The invention will first be described in connection with the drawings, and then pointed out in the claims.

Each blind A is provided with an ordinary spring-fastener, B, formed with a hook, *a*, and opening or eye *b*. A staple, C, is driven in the window-sill for fastening each blind, the hook *a* being adapted to engage with the staple, as shown at the left in Figs. 1 and 2. Upon each staple is placed loosely the fastening device D, formed with a projection, *d*, upon its under surface to enter the eye *b* of the fastener

B, for holding the hooks *a* thereof in firm engagement with the staples. The device D is also formed with an upwardly-projecting knob, *d'*, for convenience in operating the device, and at the right in Figs. 1 and 2 this knob is placed at an angle in the device, and in this form of device and in that shown in Fig. 3 the same is formed with a second projection, *d''*, at the outer end to enter the eye of the spring-fastener, as shown clearly in Fig. 2, for holding the blind partly open.

In the form of device shown in Fig. 4 the same is composed of a short bar provided with a centrally-placed wire hook, *h*, for attaching it to the staple, while in Figs. 1, 2, and 3 the device is cast in one piece, with an orifice, *i*, to be placed upon the staple before the same is driven into the window-frame.

Having thus described my invention, what I claim as new, and desire to secure by Letters Patent, is—

1. The staple C, driven into the window sill, and the fastening device D, placed loosely thereon and formed with a projection, *d*, in combination with the fastener B, formed with the eye *b* and hook *a* to engage with the staple C, substantially as described.

2. As a new article of manufacture, the fastening device D for blinds, formed with the projections *d* *d'*, to enter the eye of the hook B, the former for locking the hook in engagement with the staple, the latter for holding the blind partially open, substantially as described.

WILLIAM SIMMONDS.

Witnesses:

ANSIL A. WOODWORTH,
ANNIE SIMMONDS.