

(No Model.)

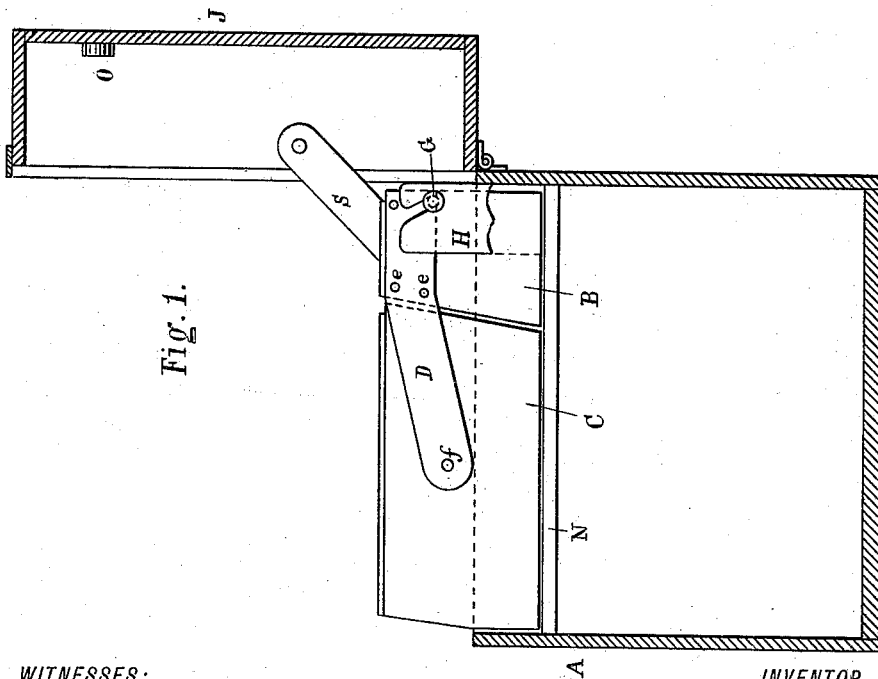
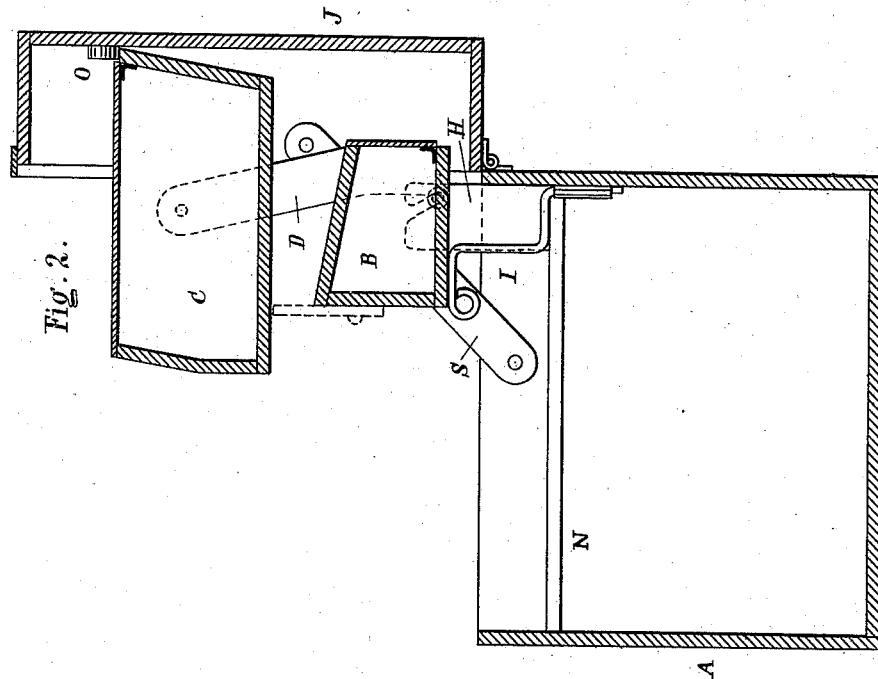
2 Sheets—Sheet 1.

W. J. LARGE.

TRUNK.

No. 385,189.

Patented June 26, 1888.



WITNESSES:

Geo. S. Eubank.

Chas. Wahlen.

INVENTOR,

WILLIAM J. LARGE.

BY

Francis C. Bowen.

ATTORNEY.

(No Model.)

2 Sheets—Sheet 2.

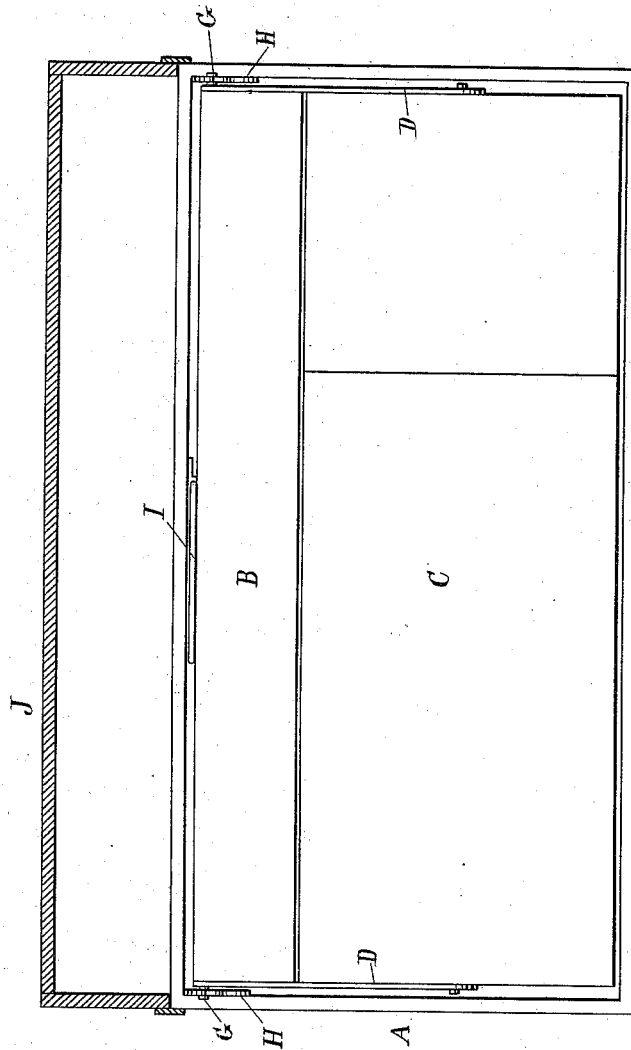
W. J. LARGE.

TRUNK.

No. 385,189.

Patented June 26, 1888.

Fig. 3.



WITNESSES:

*Jas. S. Curbank.
 Chas. Wahler.*

INVENTOR,

WILLIAM J. LARGE.

BY

Francis C. Bowen.
ATTORNEY.

UNITED STATES PATENT OFFICE.

WILLIAM J. LARGE, OF BROOKLYN, NEW YORK.

TRUNK.

SPECIFICATION forming part of Letters Patent No. 385,189, dated June 26, 1888.

Application filed May 8, 1888. Serial No. 273,243. (No model.)

To all whom it may concern:

Be it known that I, WILLIAM J. LARGE, a citizen of the United States, and a resident of Brooklyn, in the county of Kings and State of New York, have invented a certain new and useful Improvement in Trunks, of which the following is a specification.

My invention relates especially to that class of trunks in which a sectional tray is combined with carriers for supporting the tray when it is raised from the trunk-body; and my invention consists of certain novel features of construction, hereinafter fully described, to permit easy and more effective adjustment of the tray for access to the trunk-body.

In the accompanying drawings, Figure 1 represents a cross-section of a trunk embodying my invention, the tray being in a lowered position. Fig. 2 represents a similar section thereof when the tray is in raised position. Fig. 3 represents a plan or top view thereof, partly in section.

Similar letters indicate similar parts.

The letter A indicates the trunk-body, and B C two sections of a tray fitted into said body, the sections being divided from each other lengthwise of the trunk, and both being left detached from the trunk-body to move freely into and out of it. At each end of the tray-sections is an arm, D, which is fixed rigidly to the rear section, B, as by tacks *e*, and pivoted to the front section, C, as at *f*, and on the ends of the rear tray-section are secured trunnions G, resting in bearings H, which are properly secured to the ends of the trunk-body, said bearings being composed of plates with open slots, as shown. On the rear side and interior of the trunk-body is hung a bracket, I, to swing horizontally to and from such side, and on the inside of the trunk-cover J is secured a stop, O, in form of a button, it being near the front of the cover. Said cover J is properly hinged to the trunk-body, and is provided with the usual brace, S, for sustaining it in upright position.

Both tray-sections B C are open at the top, and when in position in the trunk-body rest on a sill, N, at each end of the body, as shown in Fig. 1, while when the sections are lifted out of the body they may be tilted, one on the trunnions G and the other on the pivots *f*, to take a position within the cover J, as shown

in Fig. 2, thereby entirely freeing the trunk-body and affording access to every portion thereof. When the tray-sections are raised to the position shown in Fig. 2, the rear section, B, rests on the bracket I, the latter being properly adjusted for that purpose, while the front section, C, is sustained by the end arms, D, together with the stop O, which latter engages one edge of the tray, as shown. In the last-named position of the tray-sections the front section, C, retains its original horizontal position, and thus is accessible, like the trunk-body.

In lieu of the button-stop O, a brace may be pivoted to the under side of the rear section, B, to engage the front section, C, as shown by dotted lines in Fig. 2.

What I claim as new, and desire to secure by Letters Patent, is—

1. In a trunk, the combination of two movable tray-sections, end arms fixed to one section and pivoted to the other section, trunnions on the ends of one section, and bearings for said trunnions on the trunk-body, substantially as and for the purpose described.

2. In a trunk, the combination of two movable tray-sections, end arms fixed to the rear section and pivoted to the front section, trunnions on the ends of the rear section, and bearings for said trunnions on the trunk-body, substantially as and for the purpose described.

3. In a trunk, the combination of two movable tray-sections, end arms fixed to the rear section and pivoted to the front section, trunnions on the ends of the rear section, bearings for said trunnions on the trunk-body, and a swinging bracket on the trunk-body, forming a support for the rear section, substantially as and for the purpose described.

4. In a trunk, the combination of two movable tray-sections, end arms fixed to the rear section and pivoted to the front section, trunnions on the ends of the rear section, bearings for said trunnions on the trunk-body, a swinging bracket on the trunk-body forming a support for the rear section, and a stop on the trunk-cover to engage the front section, substantially as and for the purpose described.

WILLIAM J. LARGE.

Witnesses:

FRANCIS C. BOWEN,
JAS. S. EWBank.