

(No Model.)

L. MESSER.

FRAME FOR POCKET BOOKS, SATCHELS, &c.

No. 385,639.

Patented July 3, 1888.

Fig. 1.

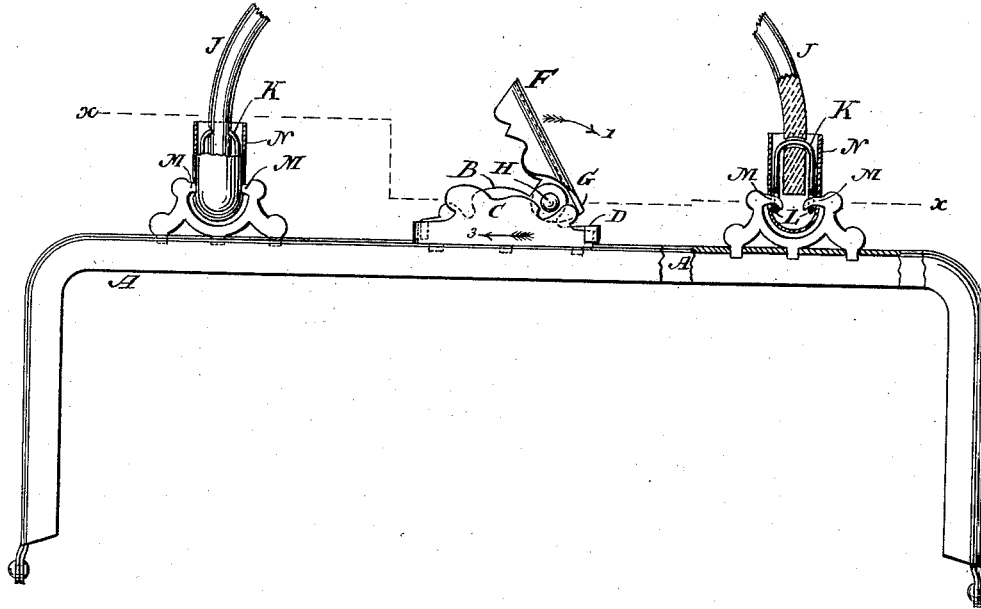


Fig. 2.

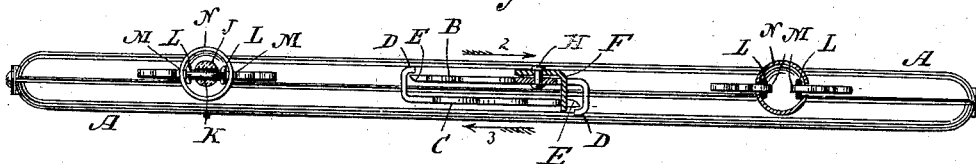


Fig. 3.

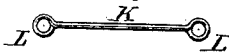


Fig. 6.

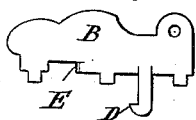


Fig. 4.

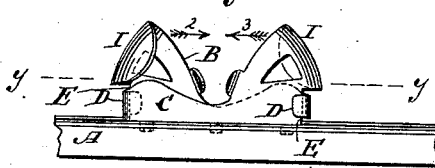


Fig. 8.

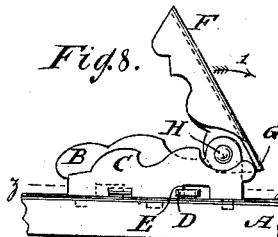
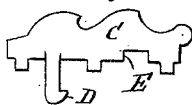


Fig. 7.



WITNESSES:

Eduard Wolff.
Theodore Miller.

Fig. 5.

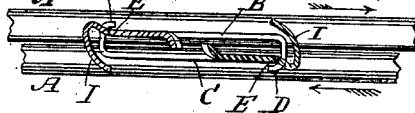
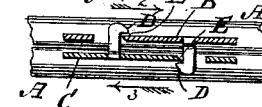


Fig. 9.



INVENTOR.

Louis Messer.

BY Van Santvoord Hauff.

his ATTORNEYS.

UNITED STATES PATENT OFFICE.

LOUIS MESSER, OF NEW YORK, N. Y.

FRAME FOR POCKET-BOOKS, SACHELS, &c.

SPECIFICATION forming part of Letters Patent No. 385,639, dated July 3, 1888.

Application filed April 5, 1888. Serial No. 269,706. (No model.)

To all whom it may concern:

Be it known that I, LOUIS MESSER, a citizen of the United States, residing at New York, in the county and State of New York, have invented new and useful Improvements in Frames for Pocket Books and other Articles, of which the following is a specification.

This invention relates to improvements in frames for such articles as pocket-books, purses, bags, satchels, and other articles, as set forth in the following specification and claims, and illustrated in the accompanying drawings, in which—

Figure 1 is a front elevation partly in section. Fig. 2 is a section in the plane xx , Fig. 1. Fig. 3 is a detail view of an attacher adapted to secure a handle end in place. Fig. 4 is a detail front view of a modification of the lock shown in Fig. 1. Fig. 5 is a section in the plane yy , Fig. 4. Figs. 6 and 7 are detail views of another modification of the lock shown in Fig. 1. Fig. 8 is a view showing the parts of Figs. 6 and 7 applied to use. Fig. 9 is a section in the plane zz , Fig. 8.

Similar letters indicate corresponding parts.

In the drawings, the letters A A indicate frames of an article, such as a bag, said frames being adapted to open and close in the ordinary way. The frames have bases B C for the locking device. The frames are shown as having catches D, and when the frames are pressed together the elasticity of the frames will cause the catches D to spring over shoulders E on the bases B C, as seen in Fig. 2, so as to lock the frames together. The shoulders D can be formed at edges of the bases B C, as seen in Fig. 2, or said shoulders can be formed in the shape of eyes, as seen in Figs. 6, 7, 8, and 9, and by having the catches D engage the eyes E, Fig. 9, the frames will be locked together. One catch, D, engaging a shoulder, E, will lock the frames together; but two catches, D, and two shoulders, E, are shown as tending to give a firmer lock.

A lever or arm, F, having a tail, G, is shown fulcrumed at H to a base, B, Figs. 1, 2, and 8. When the lever F is swung in the direction of arrow 1, Figs. 1 and 8, the pressure of the tail G against the base C will tend to force the frame carrying the base B in the direction of arrow 2 and the frame carrying the base C

in the direction of arrow 3, and by thus forcing the frames a sufficient distance the catches D are brought into position to release the shoulders E, when the frames A can be opened or separated.

Instead of employing a pivoted lever or arm, F, as in Figs. 1 and 8, to move the bag-frames A A and their attached base-pieces B C longitudinally in opposite directions to disengage the catch from the shoulder, I may use for this purpose the means shown in Fig. 4, in which each base-piece is provided with an upwardly-projecting lever or arm, I, so that by pressing the one toward the other, as indicated by the arrows 2 3, the two bag-frames A, with their base-pieces, are moved lengthwise in opposite directions and the catch thereby released.

The handle J, Figs. 1 and 2, is shown attached by means of an attacher consisting of a shank, K, Fig. 3, of spring metal, having eyes L. The shank K is passed through the handle J or made to engage the handle, as seen in Fig. 1, and the eyes L are sprung into engagement with lugs M on the frames A. When the shank K is bent into a loop, as seen in Fig. 1, the spring of said shank tending to straighten the shank will press the eyes L into engagement with the lugs M. A cap, N, can be made to conceal and protect the spring loop or attacher K I.

What I claim as new, and desire to secure by Letters Patent, is—

1. The combination, with the bag-frames A A, of the base B, stationary on one frame and provided with a locking-catch, and a base, C, stationary on the other frame, and having a shoulder with which the locking-catches engage by the inherent elasticity of the two frames, and from which shoulder the catch is released by bodily moving the base-pieces with the two bag-frames lengthwise in opposite directions, substantially as described.

2. The combination, with the bag-frames A A, movable lengthwise in opposite directions, of the base-piece B, stationary on one frame, and having a locking-catch, a base-piece, C, stationary on the other frame, and having a locking-shoulder, and means, substantially as described, for bodily moving the base-pieces, with the two bag frames, lengthwise in oppo-

site directions to release the catch from the shoulder, as set forth.

3. The combination, with the bag-frames A, movable lengthwise in opposite directions, 5 of the base-piece B, stationary on one frame, and having a locking-catch, a base-piece, C, stationary on the other frame, and having a locking shoulder, and lever devices, substantially as described, for acting upon both base- 10 pieces to bodily move them, with the two bag-frames, lengthwise in opposite directions to release the catch, substantially as described.

4. The combination, with the bag-frames A, of the base-piece B on one frame, having the 15 locking-shoulder E and laterally-projecting catch D, and the base-piece C on the other frame, having a similar locking-shoulder and lateral catch, the said catches respectively engaging the opposite locking-shoulders of 20 the two base-pieces, substantially as described.

5. The combination, with a bag-frame having the lugs M M, of a handle, J, and an elastic shank, K, secured to the handle, and having two eyes, L, respectively engaging the lugs, substantially as described. 25

6. The combination, with a bag-frame having the lugs M M, of the handle J, the loop K, having eyes L, engaging the lugs, and the cap N, surrounding the loop, substantially as described. 30

In testimony whereof I have hereunto set my hand and seal in the presence of two subscribing witnesses.

LOUIS MESSER. [L. S.]

Witnesses:

WILLIAM MILLER,
E. F. KASTENHUBER.