

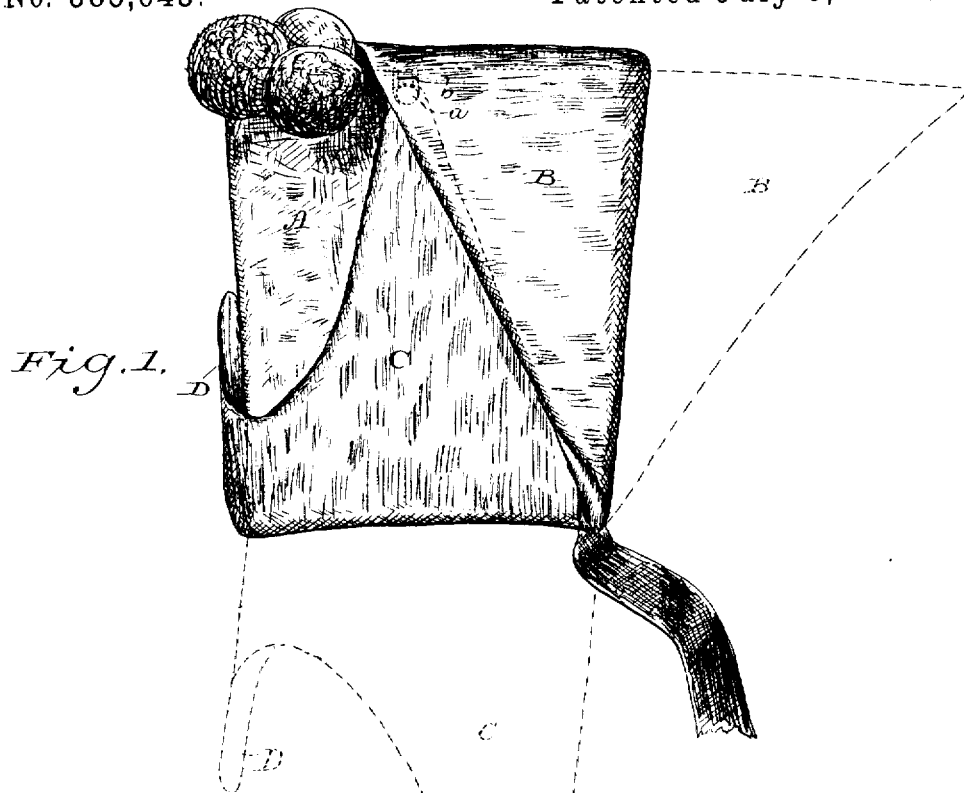
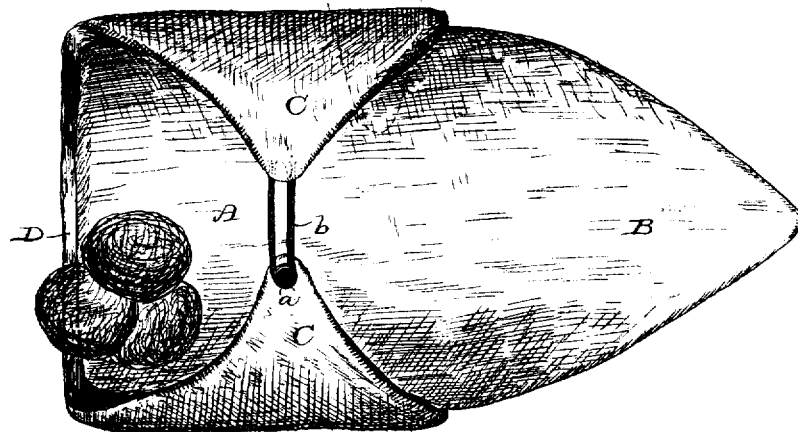
(No Model.)

2 Sheets—Sheet 1.

A. SCHULTZ.
LADY'S HEAD WEAR.

No. 385,643.

Patented July 3, 1888.

*Fig. 2.*

Witnesses,
Geo. W. Young,
N. E. Oliphant.

Inventor,
Anna Schultz.
By *John H. Underwood*,
Attorneys.

(No Model.)

2 Sheets—Sheet 2.

A. SCHULTZ.
LADY'S HEAD WEAR.

No. 385,643.

Patented July 3, 1888.

Fig. 3.

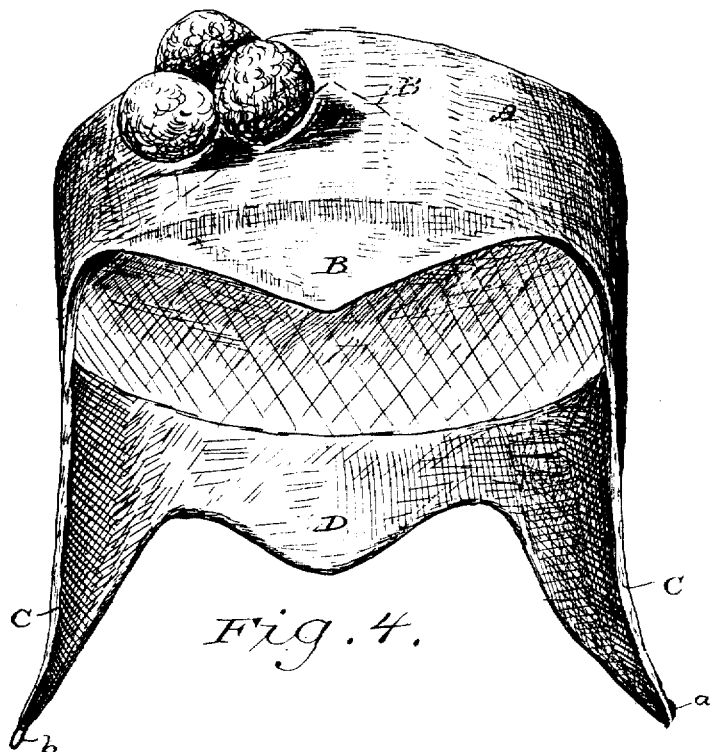
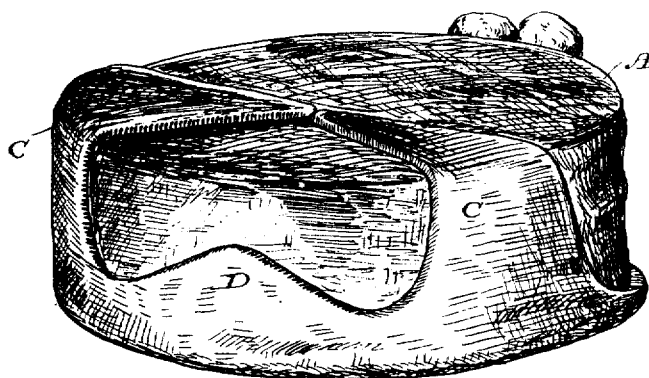


Fig. 4.

Witnesses.
Geo. W. Young.
N. E. Oliphant.

Inventor.
Anna Schultz.
By *Stout & Underwood*
Attorneys

UNITED STATES PATENT OFFICE.

ANNA SCHULTZ, OF MILWAUKEE, WISCONSIN.

LADY'S HEAD-WEAR.

SPECIFICATION forming part of Letters Patent No. 385,643, dated July 3, 1888.

Application filed March 12, 1888. Serial No. 266,931. (No model.)

To all whom it may concern:

Be it known that I, ANNA SCHULTZ, of Milwaukee, in the county of Milwaukee, and in the State of Wisconsin, have invented certain new and useful Improvements in Ladies' Head-Wear; and I do hereby declare that the following is a full, clear, and exact description thereof.

My invention relates to articles of head-wear, especially such as are designed for ladies' use, and will be fully set forth hereinafter, and pointed out in the claim.

In the drawings, Figure 1 is a side view of a hood or bonnet constructed according to my invention and showing in dotted lines the use or application thereof. Fig. 2 is a top view of the same with the upper flap extended, and the others as shown in the full lines in Fig. 1. Fig. 3 shows my invention applied to a hat or cap with all the flaps folded; and Fig. 4 is a view of the same form of my invention, but with all the flaps extended.

A is the crown or body of the bonnet, hood, hat, or cap, which may be of any shape or construction preferred, that being wholly immaterial, so far as my invention is concerned.

B is the front flap, which is designed when extended to pull over or down and thereby to protect the brow or forehead of the wearer. C C are the side flaps, and D is the rear flap, and these are designed when extended to protect and cover the ears, the throat, and the back of the neck of the wearer.

When not needed for such protection, all four of these flaps may be turned up or back against the crown or body A, as shown, and the ear-flaps C C may be held in place by means of a button; *a*, on the end of one, and an elastic loop; *b*, at the end of the other, as best shown in Fig. 2, and the same (or any analogous) fastening device may be utilized, when the flaps are used for protecting the wearer's ears, for holding the ends of said flaps together under the wearer's chin.

The great advantage of my improvement consists in the fact that it can be brought instantly into use or as quickly turned back out of the way when not needed without removing the bonnet, hood, or hat from the wearer's head, thereby making it a particularly convenient device as well as a most comfortable one in a variable climate or when the wearer has to be alternately indoors and out, and it does away with the necessity for numerous and cumbrous other wraps—such as veils, scarfs, and ear muffs—being thus a great saving of time, trouble, and expense.

The described flaps may be of the same material as that which covers the crown or body A and wholly or in part integral therewith or separate and of different material, if desired, and secured in any suitable manner thereto.

Having thus fully described my invention, what I claim as new, and desire to secure by Letters Patent, is—

The described article of ladies' head-wear, consisting of the crown A, in combination with the rear and side extensions, C D C, for protecting the neck, ears, and throat, and the front brow-protecting flap, B, extending triangularly from the crown, the ends of the side extensions being provided with fastening devices, as shown at *a b*, whereby they may be joined together either under the chin of the wearer or on top of the crown, and the brow-flap B being flexibly connected to the crown to enable it to be either extended forward therefrom or turned back thereover at will.

In testimony that I claim the foregoing I have hereunto set my hand, at Milwaukee, in the county of Milwaukee and State of Wisconsin, in the presence of two witnesses.

ANNA SCHULTZ.

Witnesses:

STANLEY S. STOUT,
H. G. UNDERWOOD.