

(No Model.)

C. A. REYNOLDS.

TOBACCO BOX.

No. 385,726.

Patented July 10, 1888.

FIG. 1.

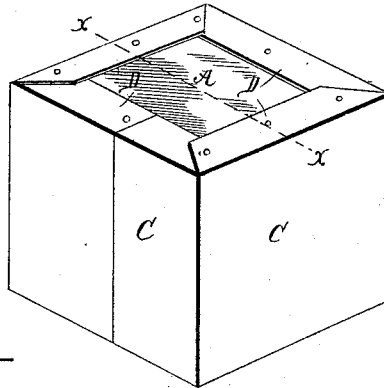


FIG. 2.

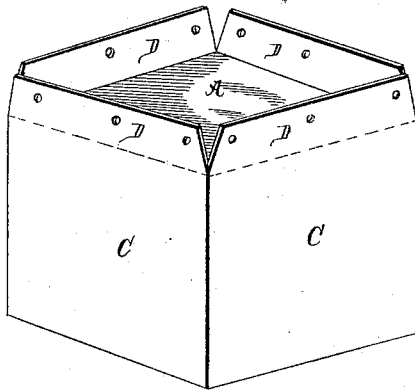


FIG. 3.

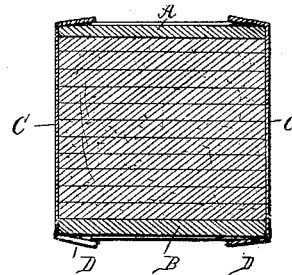
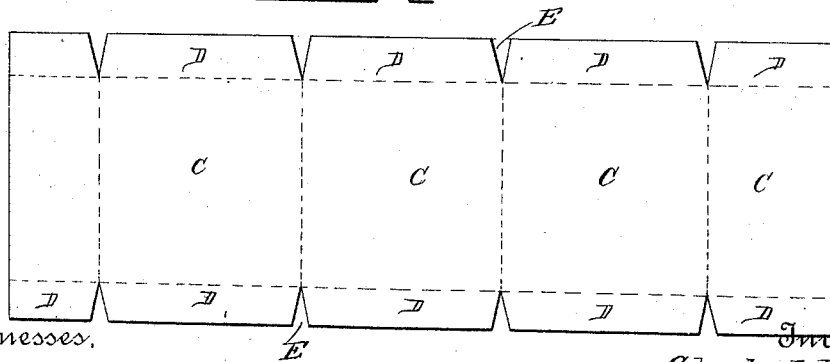


FIG. 4.



Witnesses,

Henry G. Dieterich

C. E. Ayler

Inventor,

Charles A. Reynolds

By his Attorneys.

C. A. Reynolds

UNITED STATES PATENT OFFICE.

CHARLES ALBERT REYNOLDS, OF WINSTON, NORTH CAROLINA.

TOBACCO-BOX.

SPECIFICATION forming part of Letters Patent No. 385,726, dated July 10, 1888.

Application filed February 24, 1888. Serial No. 265,102. (No model.)

To all whom it may concern:

Be it known that I, CHARLES ALBERT REYNOLDS, a citizen of the United States, residing at Winston, in the county of Forsyth and State of North Carolina, have invented new and useful Improvements in Boxes for Tobacco, of which the following is a specification.

My invention relates to improvements in tobacco-boxes; and it consists in certain novel features hereinafter described and claimed.

In the accompanying drawings, Figure 1 is a perspective view of a box as seen when closed and in condition for transportation. Fig. 2 is a similar view showing the box partially opened. Fig. 3 is a transverse vertical sectional view on the line *xx* of Fig. 1. Fig. 4 is a detail view of the blank from which the sides of the box are formed.

Referring by letter to the drawings, A designates the upper head and B the lower head of the box, which are similar in shape to the layers of tobacco which are to be packed, and C C represent the sides of the box, which are struck from a single sheet of metal. The upper and lower edges of the sides are provided with the integral flanges D D, which are provided by forming the notches E in the edges at proper intervals, so that the flanges will be equal in length to the length of the side edges of the heads. These flanges are intended to be folded over the edges of the heads and secured thereto by nails, screws, or the like.

The advantages of this box are that the tobacco is more easily and tightly packed therein, and it may be more cheaply manufactured than the boxes, buckets, or other receptacles which are usually employed. When the tobacco is to be packed therein, the lower head of the box is placed in the bottom of the receiver of a tobacco-packing machine, the tobacco is placed on the said head, and the upper head is then forced by the plunger of the machine down upon the tobacco until it is suf-

ficiently compressed. The sides of the said receiver may now be removed and the sides of the box placed therearound before the pressure upon the tobacco is relieved. In this way the packing is accomplished very quickly and the tobacco may be much more tightly compressed than if the pressure is removed in order to arrange the head of the box or tub.

The improved box is, further, readily opened to remove the contents, as it is only necessary to withdraw the nails or screws and raise the flanges which are formed on the upper edges of the sides. The heads are preferably formed of wood, for the reason that after the tobacco is packed it usually expands slightly, and if the heads were of metal they would bend or bulge, and thus interfere with the storage of the boxes.

It will be observed that the meeting ends of the flanges overlap each other and are secured together and to the wooden heads by common fastening means.

Having thus described my invention, I claim—

The improved combined wood and metal tobacco-box herein described and shown, comprising the wooden heads A B and the metallic sides C, constructed of a single continuous strip having notches in its opposite sides, thereby providing the integral side flanges, D, equal in length to the length of the sides of the heads, and folded over the heads, with the meeting ends of the flanges overlapping, and secured by fastenings passing through the overlaps to the heads, substantially as specified.

In testimony that I claim the foregoing as my own I have hereto affixed my signature in presence of two witnesses.

CHARLES ALBERT REYNOLDS.

Witnesses:

E. G. SIGGERS,
R. J. MARSHALL.