

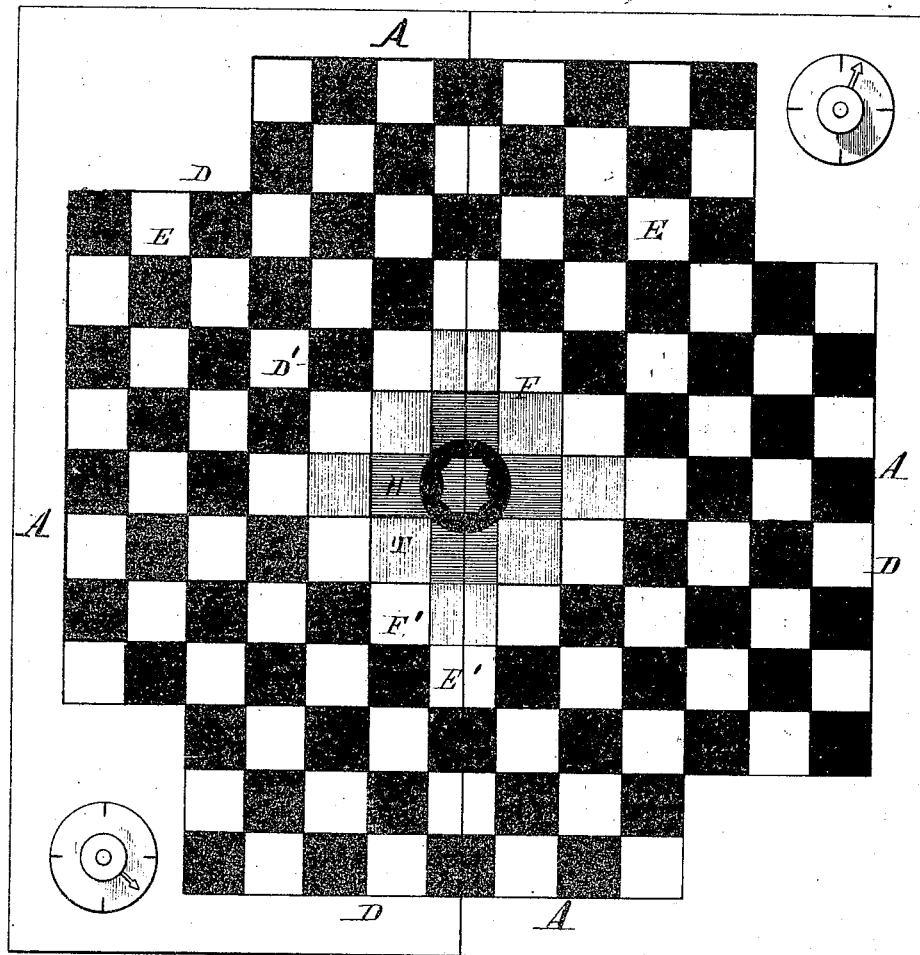
(No Model.)

F. F. GIBFORD.

GAME APPARATUS.

No. 386,007.

Patented July 10, 1888.



WITNESSES.

Edwin L. Jewett,

J. McNamee.

INVENTOR,

Frank F. Gibford,

H. F. Tamm, Attorney.

UNITED STATES PATENT OFFICE.

FRANK F. GIBFORD, OF ENGLEWOOD, ILLINOIS.

GAME APPARATUS.

SPECIFICATION forming part of Letters Patent No. 386,007, dated July 10, 1888.

Application filed November 20, 1887. Serial No. 256,533. (No model.)

To all whom it may concern:

Be it known that I, FRANK F. GIBFORD, a citizen of the United States, residing at Englewood, in the county of Cook and State of Illinois, have invented a certain new and useful improvement in Game Apparatus; and I do declare the following to be a full, clear, and exact description of the invention, such as will enable others skilled in the art to which it appertains to make and use the same, reference being had to the accompanying drawing, and to the letters and figures of reference marked thereon, which form a part of this specification.

My invention relates to a new and improved game which is designed for the use of two or more players, as will be fully understood from the following description and claim, taken in connection with the annexed drawing, which shows a general view of the board.

A A A A designate four rectangular wings which are composed of squares arranged in parallel rows at right angles to each other, the said squares alternating in colors, as shown and indicated by, say, black squares D, and, say, white squares E. Looking at the arrangement of the black and white squares obliquely, the black are in continuous rows and the white are in continuous rows, like the squares on an ordinary checker-board. Inside of the said wings is a similar arrangement of black squares D' and white squares E', constituting what I denominate the "infield," which squares are in right, left, and oblique lines

with the squares forming the four wings A, above described. This infield surrounds a similar arrangement of squares denominated the "king rows," which are lettered respectively, H and F, and which are of different colors, and of colors differing from the colors of the wing and infield squares. In the center of all the squares is the goal T, which may be circular and ornamented in any fanciful manner.

I call the game "four handed" or "royal" checkers, and it is in the nature of the ordinary game of checkers or draughts, so far as the moves and jumps are concerned; but the rows or squares are arranged around a centrally-located square or goal, as I have above described.

Having described my invention, what I claim as new, and desire to secure by Letters Patent, is--

The within-described game-board, provided with a single central goal, a series of squares, H F, of different colors immediately surrounding the goal, a series of squares, D' E', surrounding the said squares H and F, and four wings composed of different-colored squares, all of the said squares being arranged in rows at right angles to each other, as set forth.

In testimony whereof I affix my signature in presence of two witnesses.

FRANK F. GIBFORD.

Witnesses:

GEORGE A. WATTS,
S. J. FIELDING.