

(No Model.)

J. BOOTH.
WINDOW JAMB.

No. 386,182. Fig. 1.

Patented July 17, 1888.
Fig. 2.

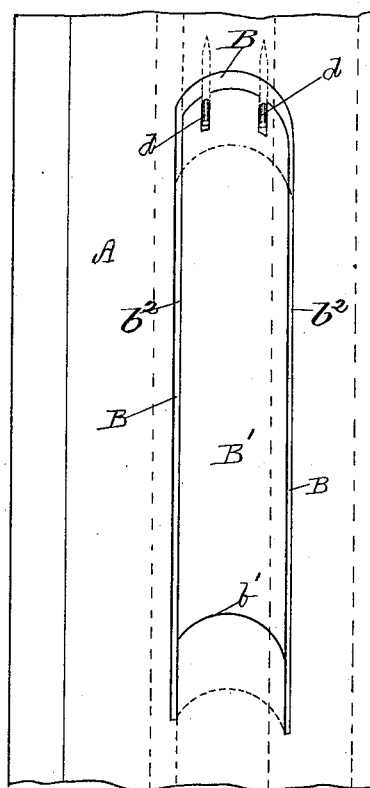
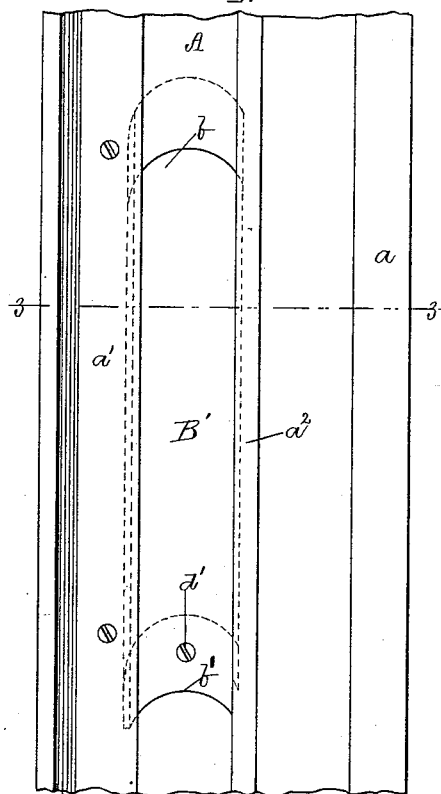
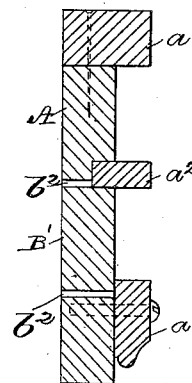
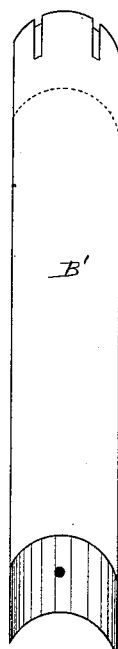
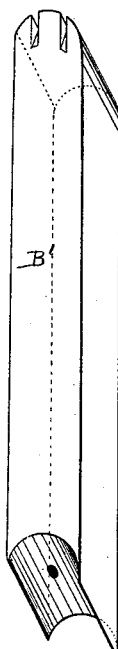
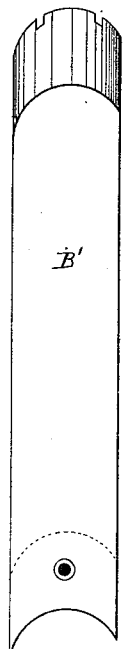


Fig. 4.

Fig. 5.

Fig. 6.

Fig. 3.



Witnesses.

Edward S. Clark.
John R. Snow.

Inventor

James Booth.
by his attorney,
J. C. Maynard.

UNITED STATES PATENT OFFICE.

JAMES BOOTH, OF TAUNTON, MASSACHUSETTS, ASSIGNOR OF ONE HALF TO
JOHN H. MOORE, OF SAME PLACE.

WINDOW-JAMB.

SPECIFICATION forming part of Letters Patent No. 386,182, dated July 17, 1888.

Application filed January 18, 1888. Serial No. 261,134. (No model.)

To all whom it may concern:

Be it known that I, JAMES BOOTH, of Taunton, in the county of Bristol and State of Massachusetts, have invented a new and useful Improvement in Window-Jambs, of which the following is a specification, reference being had to the accompanying drawings, in which—

Figure 1 is a side elevation of a portion of a window-jamb embodying my invention; Fig. 2, an elevation of the reverse of the same. Fig. 3, a section on line 3 3 of Fig. 1; and Figs. 4, 5, and 6 are different views of the pocket-cover.

My invention relates to forming the jamb-pockets through which the sash-weights are put in place and removed.

My invention consists in the combination of a pocket-cover with a jamb-pocket, which is formed by inclined circular kerfs at the top and bottom of the pocket, the top and bottom kerfs being intersected by other kerfs, forming the sides of the pocket.

In the drawings, which show my invention embodied in a window-jamb of ordinary construction, A is the jamb; *a*, the outside, *a'* the inside, and *a''* the parting bead. The pocket B is formed by two circular kerfs, one kerf, *b*, at the top, and another kerf, *b'*, at the bottom of the pocket, which are intersected by

two kerfs, *b''*, thus forming the pocket-cover B'. It is desirable that the kerfs *b b'* should be inclined in the same direction, as shown. At the upper end of the pocket, near the inner surface of the jamb, are projections *d*, to hold the upper end of cover B' in place, the lower end of the cover being secured in place by a fastening, *d'*. The side kerfs, *b''*, are concealed by the beads, and cover B' is fitted and secured so nicely in place that the top and bottom kerfs are not noticeable.

Jamb-pockets embodying my invention are formed with a very great saving of labor and in a far neater and better manner than have heretofore been possible. I am aware of Bangs' Patent No. 257,637, dated May 9, 1882, and disclaim all that is shown in it.

What I claim is—

In a jamb, a pocket, B, in combination with a cover, B', and fastenings *d d'*, the ends of the pocket and cover being formed by two inclined circular cross-kerfs, *b b'*, which are intersected by two side kerfs, *b''*, forming the sides of the pocket and cover, all substantially as and for the purpose set forth.

JAMES BOOTH.

Witnesses:

ELISHA T. JACKSON,
JOHN H. MOORE.