

(No Model.)

F. H. MORSE.
FLOOR BOARD GAGE.

No. 386,553.

Patented July 24, 1888.

Fig. 1.

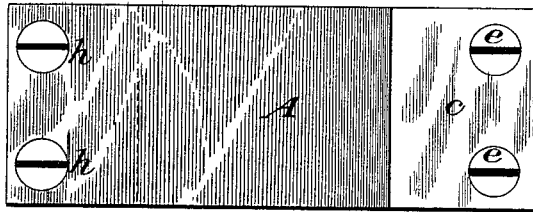


Fig. 2.

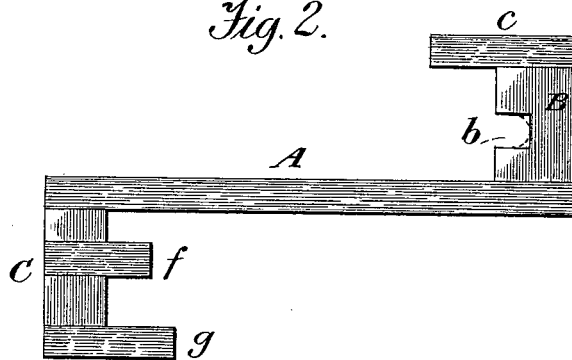
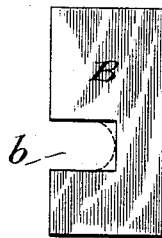


Fig. 3.



Witnesses,
A. Ruppert,
E. C. Hough.

Inventor,
Frank H. Morse.
By *his* Attorney,
Franklin H. Hough

UNITED STATES PATENT OFFICE.

FRANK H. MORSE, OF SAVANNAH, GEORGIA.

FLOOR-BOARD GAGE.

SPECIFICATION forming part of Letters Patent No. 386,553, dated July 24, 1888.

Application filed January 18, 1888. Serial No. 261,084. (No model.)

To all whom it may concern:

Be it known that I, FRANK H. MORSE, a citizen of the United States, residing at Savannah, in the county of Chatham and State of Georgia, have invented certain new and useful Improvements in Floor-Board Gages; and I do declare the following to be a full, clear, and exact description of the invention, such as will enable others skilled in the art to which it appertains to make and use the same, reference being had to the accompanying drawings, and to the letters and figures of reference marked thereon, which form a part of this specification.

This invention relates to certain new and useful improvements in gages, and is designed more particularly as a floor-board gage.

In laying floors or ceilings of matched lumber it often happens that perfect work is prevented by the tongue and groove not perfectly matching, a slight variation in the relative location of the tongue and groove or in the thickness of the lumber being sufficient to prevent a close joint and cause an uneven finish. The object of my invention is to provide an implement by means of which it can be readily and easily ascertained whether or not the tongue and groove are a perfect fit and the boards of a uniform thickness. The novelty resides in the peculiar construction of the gage, as more fully hereinafter described, shown in the drawings, and then particularly pointed out in the claims.

In the accompanying drawings, which with the letters of reference marked thereon form a part of this specification, Figure 1 is a plan view of my improved gage. Fig. 2 is a side elevation thereof, and Fig. 3 is a similar view of one of the gage-plates removed.

Referring now by letter to the details of the drawings, A designates a strip of any suitable material and of a length desired by the user. Upon one side of this strip is secured the gage B, leaving a recess, *b*, and a projecting por-

tion, *c*. This gage B and the projecting portion *c* may be formed of a single piece or of two pieces and the whole secured together by the screws *e*. Upon the opposite side of the strip A is secured the gage *c*, provided with a tongue, *f*, and a projecting portion, *g*. These may all be formed of a single piece or of separate pieces glued or otherwise secured together, and all secured to the strip A by the screws *h* or otherwise, as may be preferred.

The recess or groove *b* and the tongue *f* may be formed either square, as shown in full lines, or rounded, as shown in dotted lines, to suit the character of the work for which the gage is used.

I sometimes prefer to make the gages removable and provide others of different sizes, which may be interchangeable for odd jobs or special work.

The projecting portions *c g* may be omitted sometimes without departing from the spirit of my invention. The whole device may be constructed of a single piece; but I do not deem it advisable to so make it.

What I claim as new, and desire to secure by Letters Patent, is—

1. A floor-gage consisting of the strip A, the gage B, formed with recess *b* and projecting portion *c*, and the gage C upon the opposite side of said strip and formed with a tongue, *f*, and projecting portion *g*, substantially as described.

2. The floor-gage described, comprising the strip A and the interchangeable gages secured thereto upon opposite sides and opposite ends thereof and formed with projecting portions, as set forth.

In testimony whereof I affix my signature in presence of two witnesses.

FRANK H. MORSE.

Witnesses:

HENRY WITHERHUE,
P. B. SPRINGER.