

(No Model.)

2 Sheets—Sheet 1.

D. J. BROWN.  
FIRE ESCAPE.

No. 417,902.

Patented Dec. 24, 1889.

Fig. 2

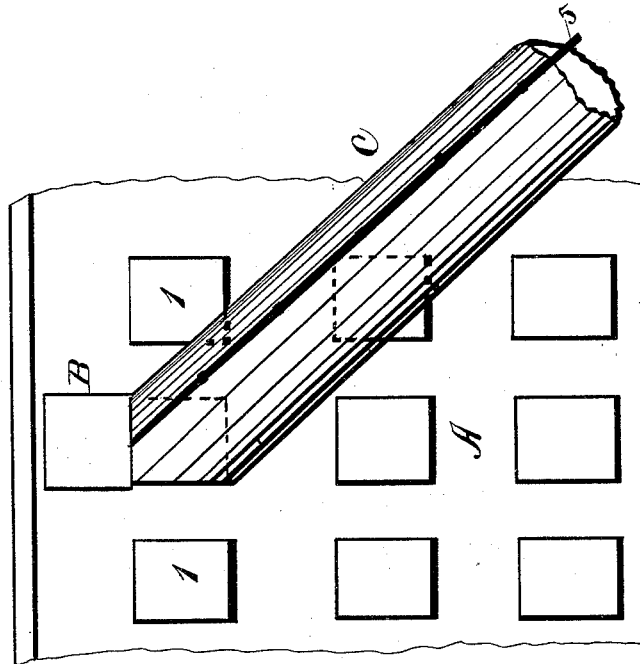


Fig. 3.

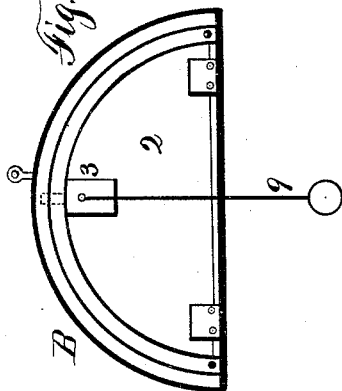


Fig. 4

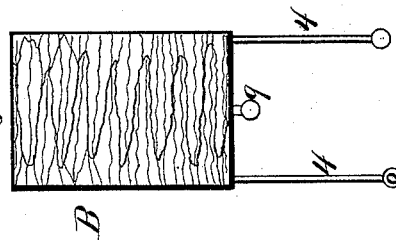
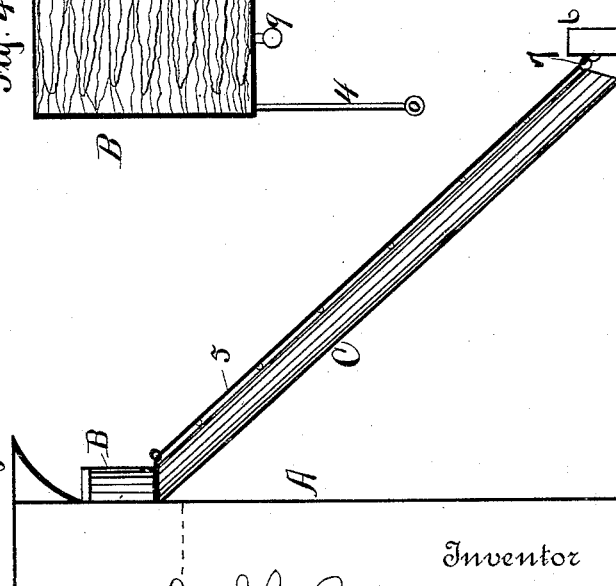


Fig. 1



Witnesses

*N. P. Denson*  
*J. T. Denson*

Inventor

*David J. Brown*  
By *his* Attorneys  
*Smith & Deacon*

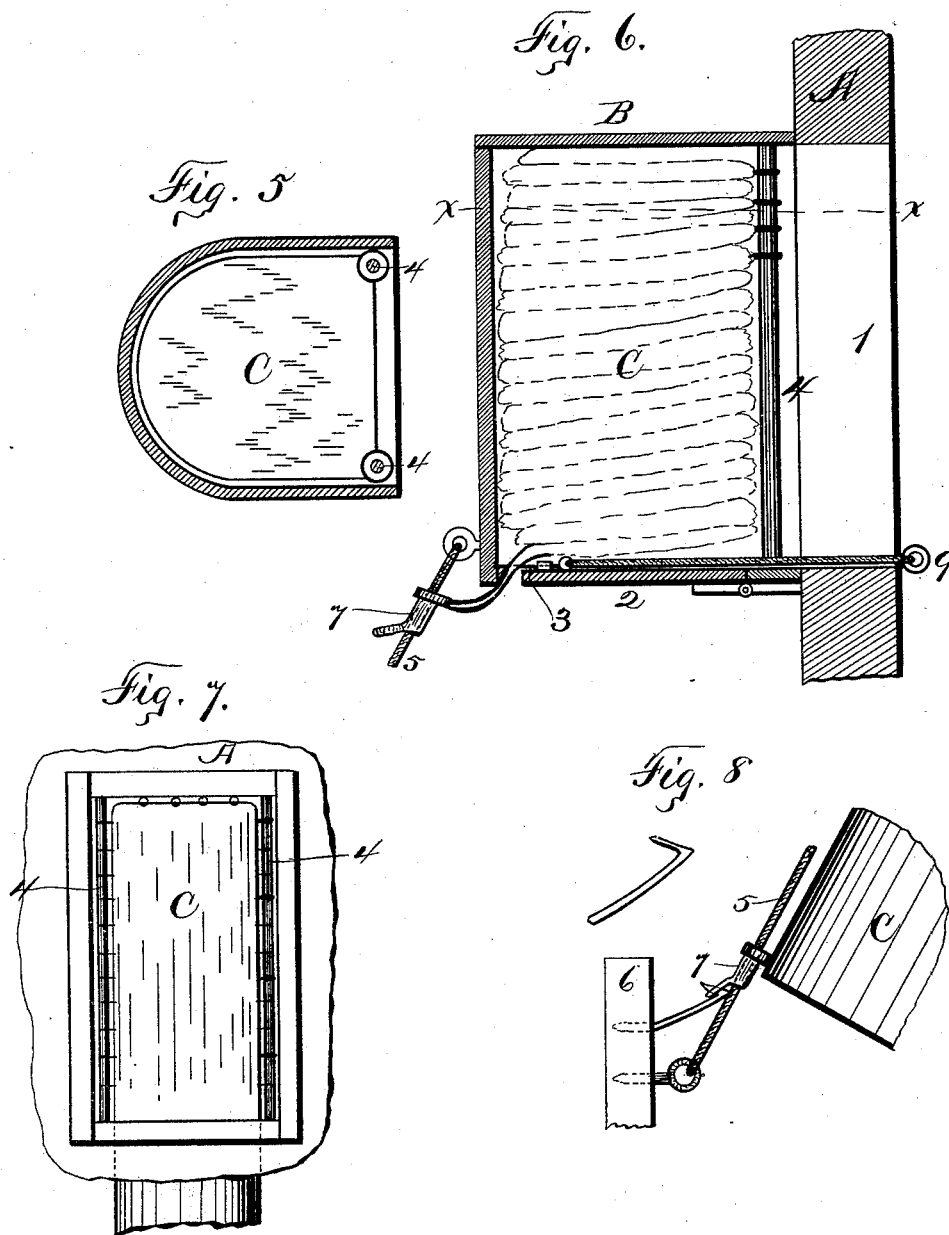
(No Model.)

2 Sheets—Sheet 2.

D. J. BROWN.  
FIRE ESCAPE.

No. 417,902.

Patented Dec. 24, 1889.



Witnesses  
H. P. Denison  
J. C. Collins

Inventor  
David Jerome Brown  
By his Attorney  
Smith & Denison

# UNITED STATES PATENT OFFICE.

DAVID JEROME BROWN, OF SYRACUSE, NEW YORK.

## FIRE-ESCAPE.

SPECIFICATION forming part of Letters Patent No. 417,902, dated December 24, 1889.

Application filed April 17, 1889. Serial No. 307,546. (No model.)

*To all whom it may concern:*

Be it known that I, DAVID JEROME BROWN, of Syracuse, county of Onondaga, in the State of New York, a citizen of the United States, have invented certain new and useful Improvements in Fire-Escapes, of which the following is a specification, reference being had to the accompanying drawings, in which—

Figure 1 is a side elevation of the escape attached to the building and having the chute extended. Fig. 2 is an enlarged front elevation of the building with part of chute extended. Fig. 3 is a bottom plan view of the case inclosing the chute. Fig. 4 is a front elevation of the case, showing with broken line the chute folded within the case. Fig. 5 is a horizontal transverse section of the case on line *xx*, Fig. 6 is a vertical longitudinal section of the case, showing the chute dotted in as folded, the rod-and-ring connection at the edge of the chute, and the connection of the lower front edge of the chute to catch the hook and ring on the stationary cable. Fig. 7 is a rear elevation of the chute extended, looking out from the window and showing the rod-and-ring connection of the edges of the chute holding the edges close to the building. Fig. 8 is a detail of the hooking mechanism to lock the lower end of the chute when lowered.

My invention relates to that class of fire-escapes in which a tubular bag or chute is employed in connection with a supporting-cable.

My object is to provide a bag fire-escape which, when not in use, is inclosed within a box or case above the top of the window, said box being provided with a drop-bottom supported by a catch, and the bottom of the box being also provided with guide-rods extending down on each side of the window substantially to the bottom thereof, and the end of the bag being provided with rings or eyes on either side fitting over the guide-rods, so that when the bag is lowered the upper end thereof will inclose the whole window, so that a person standing at the window cannot see the ground, but can only look into the chute, and a cable connected at the upper end to the front of the box and extending off at any desired angle to a post or other object to which the lower end of the cable is secured,

said cable standing directly away from the building or closely alongside of it, or at any intermediate point, and said chute being provided on top at its lower end with a ring or eye fitting over the cable, which ring or eye, when the bottom of the box is opened, guides the bag or chute down the cable to the post, means being provided for catching the lower end of the chute at the bottom of the cable and holding it.

My invention consists in the several novel features of construction and operation hereinafter described, and specifically set forth in the claims annexed.

It is constructed as follows: A is the front of the building, in which 1 1 are the windows. Above the top of a convenient window I secure the box or case B, of any desired form, provided with a drop-bottom 2, hinged to the back of the case and provided with a catch 3 to hold it up, and 4 4 are guide-rods, mounted one on either side of the window and secured as to their lower ends to the building or casing, and as to their upper ends to the case B, or to the building within the case. The chute C, consisting of a tubular bag open at both ends, has its upper end mounted or otherwise secured within the case, and also provided with rings or eyes, which fit over the rod 4 on each side, and 5 is a cable connected at its upper end to the case B, and at its lower end to a post or other suitable object 6 in a permanent manner and substantially taut. The lower end of the chute is provided with a ring or eye 7, fitting over the cable loosely, and this ring or eye guides the lower end of the chute as it slides down the cable. When not in use, the chute is bunched or folded up within the case, as shown in the drawings by the irregular lines, and when the cord or rod 9 is pulled in far enough to release the catch 3 the whole chute will drop out of the case, the upper end on the sides sliding down the rod 4 to the bottom of the window, and the lower end of the chute will slide down the cable to or adjacent to the post, where it can be secured in any ordinary manner; or any kind of a snap-catch can be used to catch it automatically at the post or adjacent thereto. It will thus be observed that the chute will extend from the window down adjacent to the cable, and that the lower end of it will be open,

and that the upper end will cover the whole front of the window, or the whole of the window-opening, so that a person standing at that window cannot look down to the ground and  
5 will not become dizzy or scared, but will quietly step into the chute and slide down unharmed.

What I claim is—

10 The combination, with the cable permanently secured to the building and to a suitable lower support, of a bag-chute adapted to be folded within a stationary case upon the

building, a stationary case upon the building and guide-rods contiguous thereto upon which the upper end of the case is mounted, and a  
15 hinged drop-bottom to the case and means for locking and unlocking it, substantially as described.

In witness whereof I have hereunto set my hand this 11th day of February, 1889.

DAVID JEROME BROWN.

In presence of—

H. P. DENISON,

F. T. DENISON.