

(No Model.)

2 Sheets—Sheet 1.

W. M. MADDEN.
MILKING STOOL.

No. 417,929.

Patented Dec. 24, 1889.

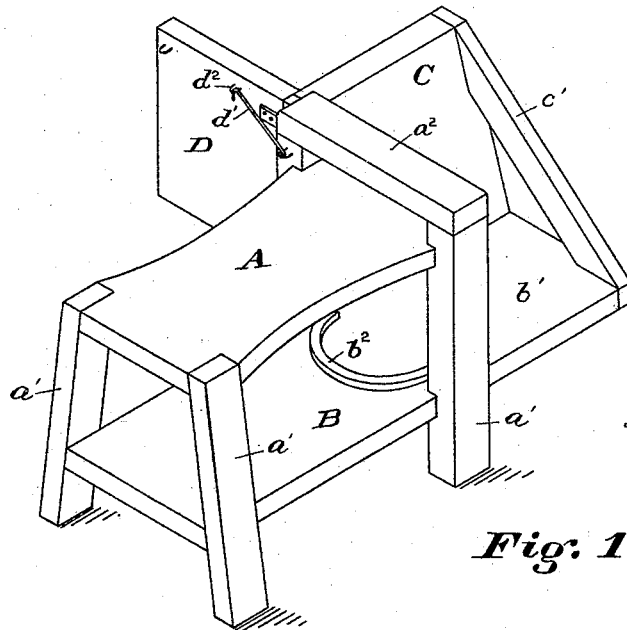


Fig. 1.

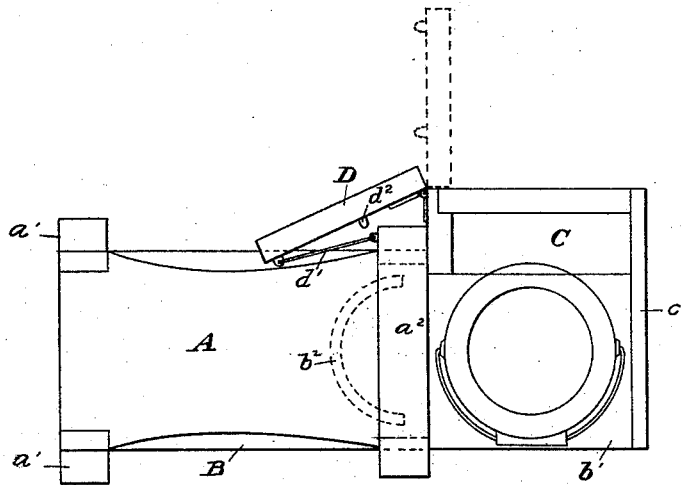


Fig. 2.

W. M. Madden
Inventor

Witnesses

J. K. E. Diffenderffer.

C. C. Woolley

By his Attorney *Proctor Stuart*

(No Model.)

2 Sheets—Sheet 1.

W. M. MADDEN.
MILKING STOOL.

No. 417,929.

Patented Dec. 24, 1889.

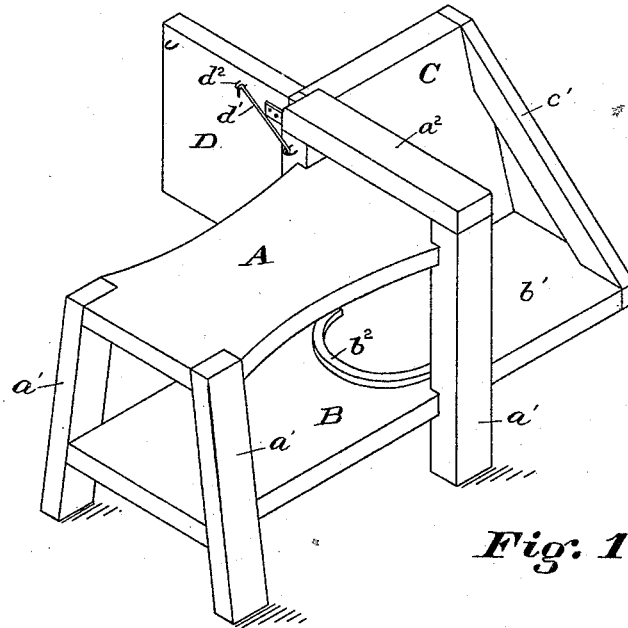


Fig. 1.

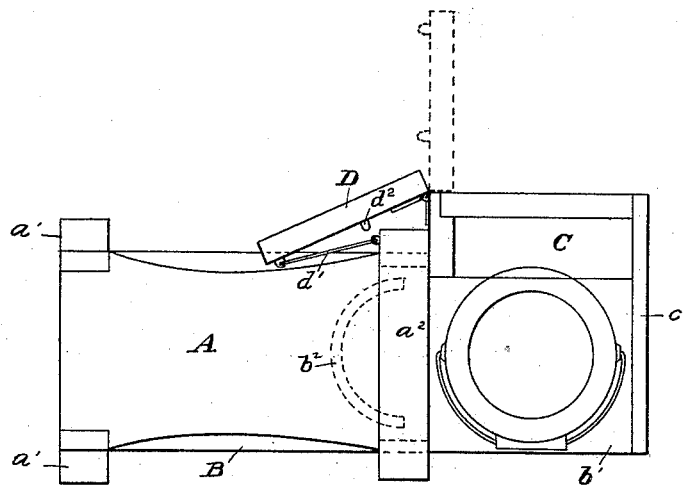


Fig. 2.

W. M. Madden
Inventor

Witnesses

J. K. E. Diffenderffer.

C. C. Woolley

By *his* Attorney *Proctor & Lunt*

(No Model.)

2 Sheets—Sheet 2.

W. M. MADDEN.
MILKING STOOL.

No. 417,929.

Patented Dec. 24, 1889.

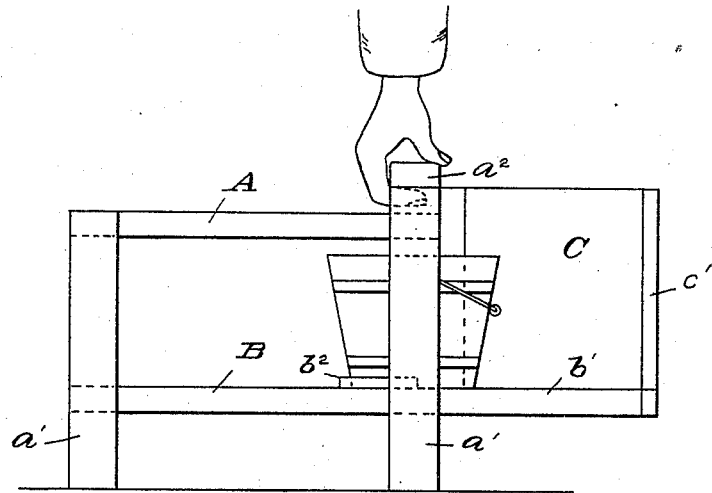


Fig. 3.

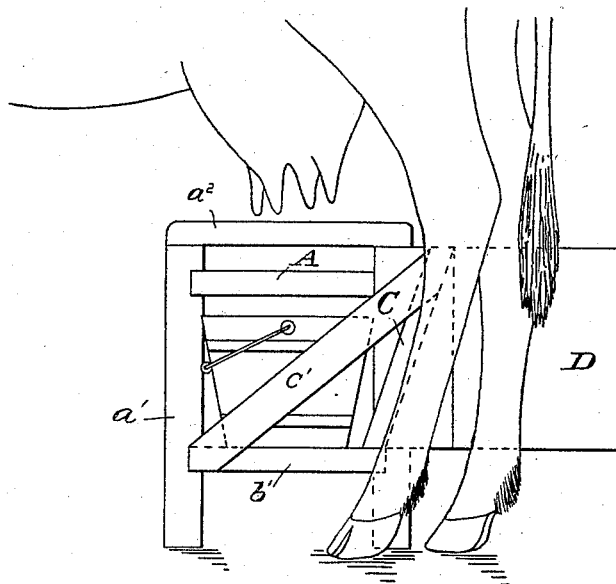


Fig. 4.

Witnesses
J. K. E. Diffenderffer.
C. C. Woolley.

Inventor
W. M. Madden
By his Attorneys
Price & Stewart

UNITED STATES PATENT OFFICE.

WHEELER M. MADDEN, OF ST. GEORGE, MARYLAND.

MILKING-STOOL.

SPECIFICATION forming part of Letters Patent No. 417,929, dated December 24, 1889.

Application filed October 17, 1889. Serial No. 327,295. (No model.)

To all whom it may concern:

Be it known that I, WHEELER M. MADDEN, of St. George, Baltimore county, Maryland, have invented certain new and useful Improvements in Milking-Stools, of which the following is a full and complete specification.

The object of my invention is to provide a stool which may be placed under a kicking cow, and which will make it impossible for her to kick either the milk-bucket or the milker. The stool is so constructed that the milk-pail may be placed in it and then the stool picked up by a handle and stool and pail be carried together.

Figure 1 is an isometric view of my stool. Fig. 2 is a plan showing hinged shield. Fig. 3 is a side elevation showing bucket in position to be carried in the stool. Fig. 4 is an end elevation of the stool with bucket on it and the stool in position beneath a cow.

A represents the seat of the stool, and a' a' the legs.

a^2 is a handle for carrying the stool, which is located at the end next the pail-stand.

B is the pail-stand, which consists of a board attached to the legs of the stool beneath the seat and low enough to allow a milk-pail to be placed upon it under the seat. This board extends at one end b' a distance sufficient to give ample room for the pail beyond the stool. On the left side of the extension b' is erected a shield C, which I prefer to make inclined, so as to conform to the inclination of the cow's legs, as shown in Fig. 4. If necessary, the shield C may be provided with a support c' , by which it is stayed to the far side of the pail-stand b' . Hinged to the back of the shield

C is the shield D, which stands vertically and at right angles to the stool. The shield D is maintained in position by the hook d' , which is secured to the leg of the stool nearest to it, and holds the shield by the staple d^2 . When the stool is in use, the shield may be folded back against the stool, if desired, so as not to be in the way of the milker when carrying the stool.

b^2 is a stop, generally made semicircular in form and placed upon the pail-stand B in such position that when the pail of milk is pushed under the stool and the stool lifted by the handle a^2 it will balance the stool and enable both stool and pail to be carried together safely.

What I claim as my invention is—

1. In a milking-stool, the combination of a stool with a pail-holder at one end and a shield located on the side of the pail-holder next the cow's leg, substantially as described.

2. In a milking-stool, the combination of a stool with a pail-holder at one end, a shield located on the side of the pail-holder next the cow's leg, and a leg-shield at right angles to the pail-shield and located at the point where the pail-shield joins the stool, substantially as described.

3. In a milking-stool, the combination of a stool with a pail-holder at one end, and a shield located on the side of the pail-holder next to the cow's leg, and a stop on the pail-stand to determine the position of the pail when pushed beneath the handle, substantially as described.

WHEELER M. MADDEN.

Witnesses:

MARGARET TURNER,
IDA LINTHICUM.