

(No Model.)

L. M. DOUGLASS.  
SHOE PROTECTOR.

No. 419,506.

Patented Jan. 14, 1890.

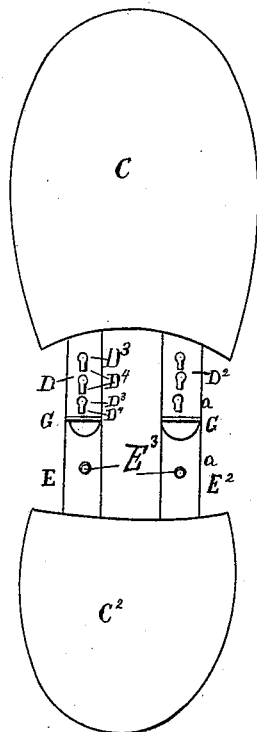


Fig. 2.

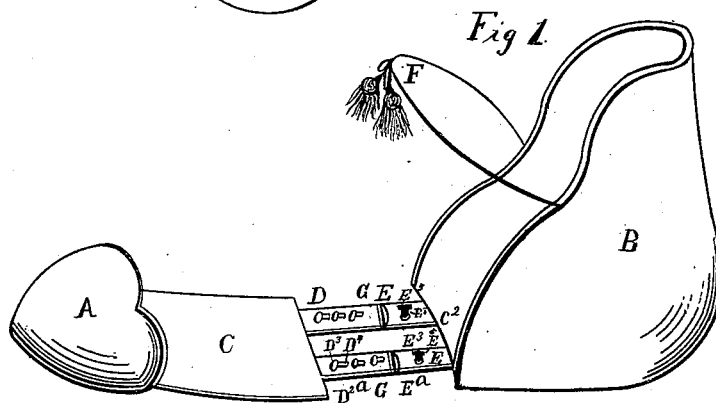


Fig. 1.

Witnesses

G. A. Clarke,

R. A. Haseltine.

Inventor

Lizzie M. Douglass

By her Attorneys

S. A. & S. C. Haseltine

# UNITED STATES PATENT OFFICE.

LIZZIE M. DOUGLASS, OF SPRINGFIELD, MISSOURI.

## SHOE-PROTECTOR.

SPECIFICATION forming part of Letters Patent No. 419,506, dated January 14, 1890.

Application filed December 24, 1888. Serial No. 294,554. (No model.)

*To all whom it may concern:*

Be it known that I, LIZZIE M. DOUGLASS, a citizen of the United States, residing at Springfield, in the county of Greene and State of Missouri, have invented certain Improvements in Children's Shoe-Protectors, of which the following is a specification.

The accompanying drawings will illustrate my invention.

10 My invention relates to improvements in shoe-protectors, the object of which is to provide a cheap, simple, durable, adjustable, and convenient device for protecting shoes, and especially designed for the protection of  
15 the shoes of infants and to protect the heels and toes of creeping children's shoes. These objects I attain by means of the device illustrated in the accompanying drawings, forming a part of this specification, in which—

20 Figure 1 is a view in elevation of the entire device. Fig. 2 is a bottom view showing the adjustment of the toe part A with the heel part B.

Similar letters of reference represent corresponding parts in both figures.

25 A is the toe of the protector, which fits over the toe of the shoe and around the same, C being the bottom plate, which rests under the sole of the shoe and is made to fit the same. Said toe-protector may be made of any  
30 suitable material, preferably of metal, and of any desired thickness for durability.

B is a heel-plate formed so as to inclose and protect the heel of the shoe, having a  
35 bottom plate C<sup>2</sup> for passing beneath the heel of the shoe, and is made and formed to receive and fit the same. Said heel-plate may be made of any suitable material and provided with a suitable strap or cord F for fastening  
40 over the instep to secure the same in place. The bottom plates C C<sup>2</sup> are connected by means of any suitable and elastic springing

or adjustable device or devices, preferably as shown, by means of two attachments D D<sup>2</sup> and E E<sup>2</sup>, one of which E E<sup>2</sup> is provided  
45 with lugs or projections E<sup>3</sup>, which have heads E<sup>5</sup> for passing through irregular-shaped slots D<sup>3</sup>, or slots which have an opening large enough to admit the head E<sup>5</sup> and are made so as to fit the neck of the said lug at other  
50 parts D<sup>4</sup> of the said slot.

G are small bands secured or placed round the parts E E<sup>2</sup>, so that when the attachment is formed by means of a lug and slot, as specified, the band G is slipped over the two  
55 parts D E up close to the lug, so as to hold the same firmly in place. Thus I have a protector that may be easily adjusted to the length of the shoe which it is to inclose, so that after the heel and toe are secured in  
60 place on the shoe the adjustment may be made and secured, as specified, and the parts D E D<sup>2</sup> E<sup>2</sup> are preferably made of metal that will spring, so as to be easy upon the foot.

Having thus described my invention, what I  
65 claim as new, and desire to secure by Letters Patent, is—

The combination of a toe-protector A and heel-protector B, provided with bottom plates C C<sup>2</sup>, formed to fit the bottom of the shoe, and  
70 an adjustable connection between the same, consisting of two pairs of spring-metal pieces D D<sup>2</sup> E E<sup>2</sup>, the pieces D D<sup>2</sup> having openings or slots D<sup>3</sup> D<sup>4</sup>, the other pieces E E<sup>2</sup>, provided with lugs E<sup>3</sup> and heads E<sup>5</sup> thereon, and bands  
75 G, substantially as and for the purpose specified.

In testimony whereof I affix my signature in presence of two witnesses.

LIZZIE M. DOUGLASS.

Witnesses:

A. F. AMADON,

ADDIE L. WHITCOMBE.