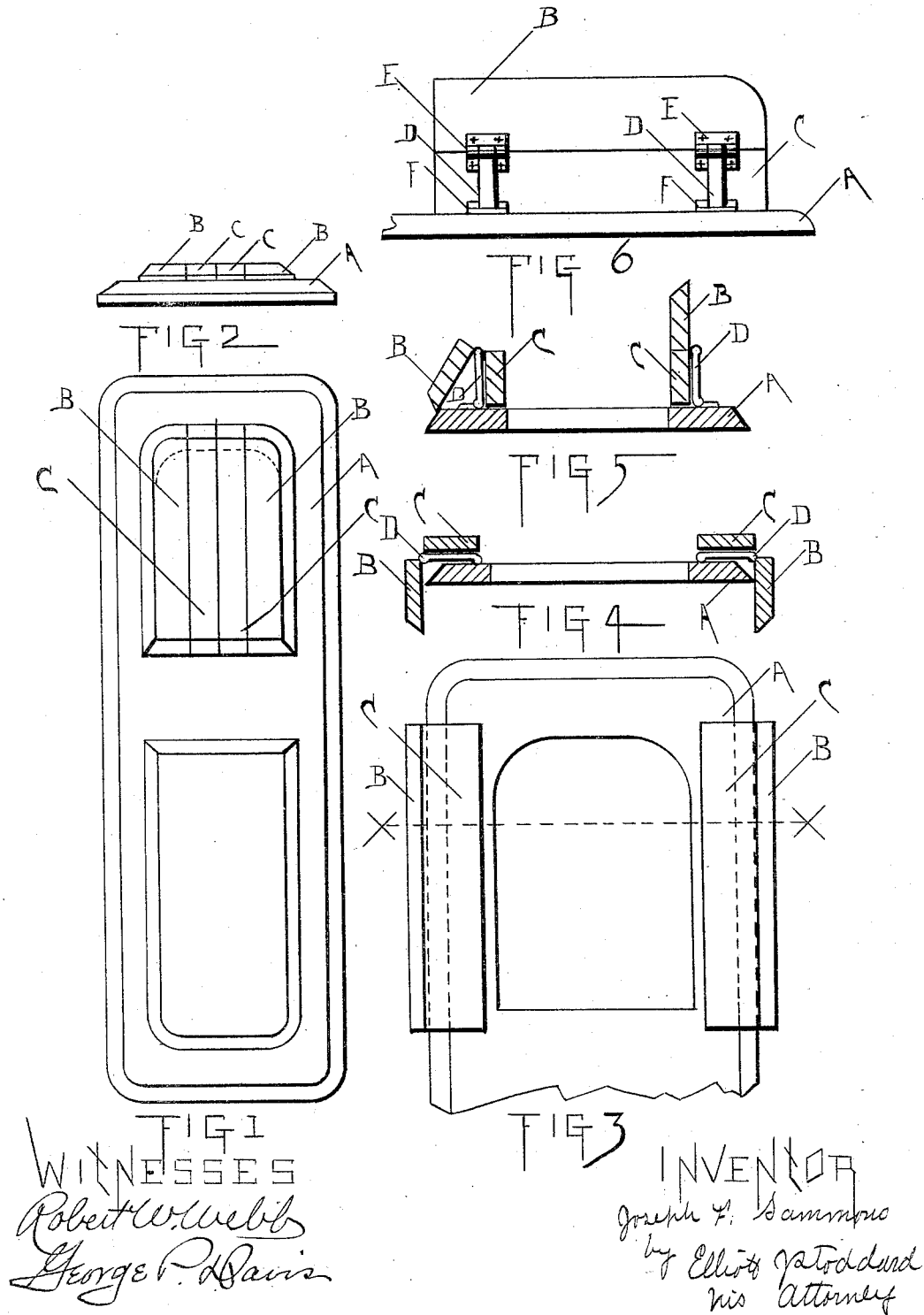


(No Model.)

J. F. SAMMONS.  
BURIAL CASKET LID.

No. 419,714.

Patented Jan. 21, 1890.



# UNITED STATES PATENT OFFICE.

JOSEPH F. SAMMONS, OF JACKSON, MICHIGAN.

## BURIAL-CASKET LID.

SPECIFICATION forming part of Letters Patent No. 419,714, dated January 21, 1890.

Application filed November 15, 1889. Serial No. 330,456. (No model.)

*To all whom it may concern:*

Be it known that I, JOSEPH F. SAMMONS, of Jackson, in the county of Jackson and State of Michigan, have invented a new and useful Improvement in Burial-Casket Lids, of which the following is a specification.

My invention relates to burial-casket lids; and the objects of my improvements are to provide a burial-casket lid which may be adjusted to various positions to economize space, to shade the light from the interior of the casket, and to afford a support for floral ornaments, which shall, when open, present a surface to view of uniform appearance with the adjoining surfaces of the casket and present a neat and ornamental appearance. I attain these objects by the device illustrated in the accompanying drawings, in which—

Figure 1 is a plan view of the entire casket. Fig. 2 is an end elevation of the top of the casket. Fig. 3 is a plan view of one end of the casket with the lids thrown back. Fig. 4 is a section of the top of the casket, taken on the line X X, Fig. 3. Fig. 5 is a sectional view similar to Fig. 4, with the lid adjusted to different positions; and Fig. 6 is a side elevation of one end of the top of the casket, looking from the right, as shown in Fig. 5.

Similar letters refer to similar parts throughout the several views.

As shown in the drawings, the lid extends only a portion of the length of the casket; but it may as well extend the whole length.

A is the top of the casket.

The lid consists of two separable parts B C and B' C'. Said two parts are constructed alike, and therefore one description will answer for both. The separable parts of said lid consist of two parts B and C, hinged longitudinally together at their edges.

D D are metal bars or straps of a length about equal to the width of the part B of the lid, hinged at one end to the top of the casket, near the edge of the opening to the interior of the casket, by means of hinges attached to said casket-top by screws passing through slots, thus permitting said hinges to be adjusted to and from the opening, and at the other end provided with an eye, through which the pintles of the hinges E extend, said eyes

passing around said pintles at their centers. The hinges E and the bars D are shown in the drawings as located at the outside of the lid when the lid is adjusted to the position shown in Fig. 6. If the two parts of which each of the separable parts of the lid is composed are of the same width, said separable parts of the lid may be adjusted to the position shown in Fig. 6, with the hinges E and bars D either at one side or the other. The bars D D are provided with ornamental surfaces, and the hinges are preferably sunk into the material to which they are attached. The hinges E and the bars D may, of course, be placed so as to come at the inside of the lid in the position shown in Fig. 6, in which case the portion of the lid adapted to come at the outside of the casket when the lid is closed would be the lower.

The operation of my invention is as follows: The parts B and C are adjusted about the hinges E to the same plane and laid over the opening through the top of the casket. The part B' C' is similarly adjusted. The two parts B C and B' C' meet at the center of the top of the casket and present the appearance of a panel. The two separable parts of the lid may be raised and laid upon the side of the casket, as shown in Fig. 3, the bars D D turning about the hinges F F. In this position the bars D D and the hinges are covered by the parts of the lid B B', the outside of the lid (which is finished to correspond with the rest of the outside of the casket) is presented to view, the parts B B' present a plane horizontal surface to receive flowers, and the parts C' C hang in a vertical position at the side of the casket out of the way. It is often desirable to shade the direct light from the interior of the casket. To accomplish this purpose, the separable parts B C B' C' of the lid, or either of them, may be adjusted to a vertical position, as shown at the right of Fig. 5, being supported by resting upon the top of the casket, and being held in their vertical position by the bars D D; or said separable parts may be adjusted to the position shown at the left of Fig. 5, the part B being held in a vertical position by the bars D, and the part C resting in an approximately

vertical position and forming a support for displaying floral designs, such as anchors, crosses, &c.

Having fully described my invention, what I  
5 claim, and desire to secure by Letters Patent,  
is—

In a burial-casket, the combination of a  
casket-lid consisting of two separable parts  
B C and B' C', each of said separable parts  
10 consisting of two parts B and C and B' and

C', hinged together at their edges, and bars  
D, hinged to the casket-top and to said separable parts at the junction of their constituent parts, substantially as shown and described.

JOSEPH F. SAMMONS.

Witnesses:

JOSIAH B. FROST,  
EMMETT L. WEBB.