

(No Model.)

C. ERLANGER.
OVERALLS.

No. 422,386.

Patented Mar. 4, 1890.

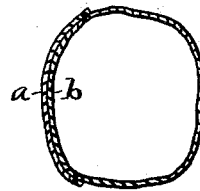
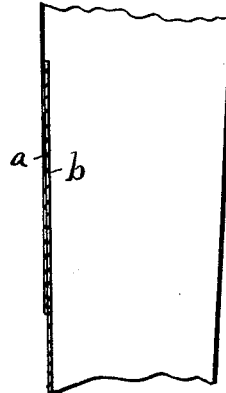
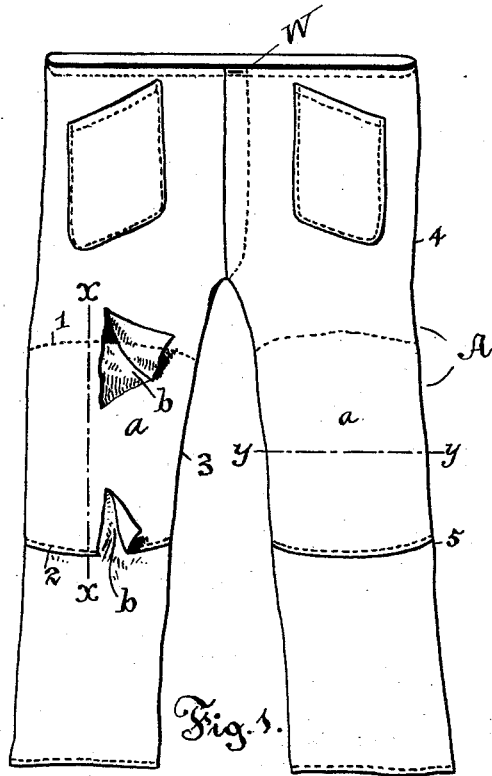


Fig. 2.

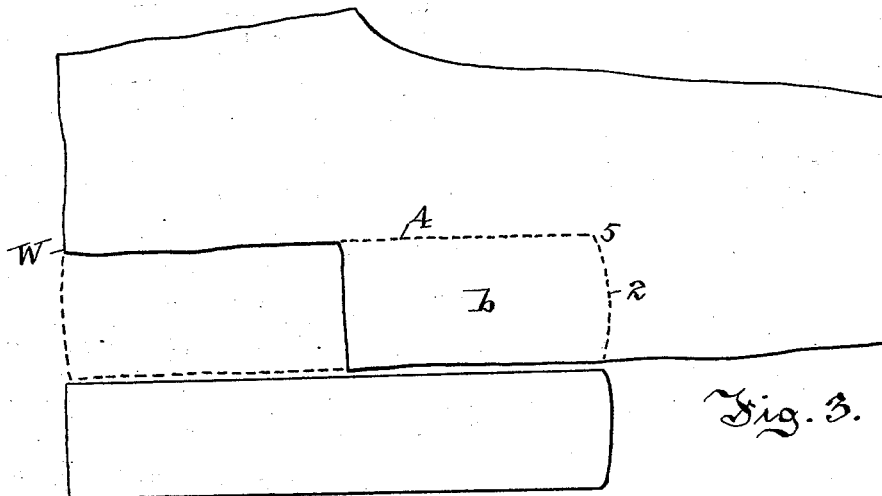


Fig. 3.

Witnesses:

Ed. E. Clement
Jm. H. Jacobson

Inventor:
Charles Erlanger
by Lewis Abraham

Attorney.

UNITED STATES PATENT OFFICE.

CHARLES ERLANGER, OF BALTIMORE, MARYLAND.

OVERALLS.

SPECIFICATION forming part of Letters Patent No. 422,386, dated March 4, 1890.

Application filed January 15, 1890. Serial No. 336,990. (No model.)

To all whom it may concern:

Be it known that I, CHARLES ERLANGER, a citizen of the United States, residing at the city of Baltimore, in the State of Maryland, have invented a new and useful Improvement in Overalls, of which the following is a specification.

My invention relates to improvements in overalls, and has for its object the provision of means for fortifying the front legs at the portion thereof which requires strength and protection, all as hereinafter fully described, illustrated in the drawings, and specifically set forth in the claim.

Referring to the accompanying drawings, wherein like letters of reference point out similar parts on each figure, Figure 1 is a front view of a pair of overalls, parts being broken away, illustrating my invention. Fig. 2 represents sectional views thereof on the lines *x x* and *y y*. Fig. 3 is a detail view of the preferred form of blanks that compose the front and rear of each leg of a pair of overalls in practicing my invention.

In the drawings, A is the front leg, which is composed of two sections *a b*, adapted to lie one over the other a given distance, extending in double laminæ above and below the knee and connected to each other by rows of stitching 1 2 and to the rear fabric of each leg by ordinary inseam 3, the opposite edge of the overlapping pieces being held in place by an outer row of stitches 4, continuous from the waistband W to the point 5. Said stitching may, however, be continued the full length of the garment, if required. I thus fortify the front of the legs of overalls at a

location that requires great strength. This is accomplished without waste of material, as the various blank pieces shown in detail in Fig. 3 can be cut from the fabric and every portion thereof utilized, as will more particularly appear by a companion application for Letters Patent, filed January 15, 1890, Serial No. 336,991.

In the diagram of blanks represented in Fig. 3, as well as in the finished garment shown in Fig. 1, the re-enforce is a separate piece *a*, adapted to depend vertically from the waistband and to cover over a portion of the section *b*; but the relative position thereof will be varied if said re-enforce is cut out from the foot upwardly, either construction being within the scope and purview of my invention.

Having thus fully described my invention, what I claim, and desire to secure by Letters Patent of the United States, is—

A pair of overalls the front legs thereof made of two lengths of material overlapping each other above and below the knee, connected to each other by upper and lower marginal rows of stitches, whereby the fronts of said legs are composed of laminated fabric a given distance above and below the knee portion, and the remainder extending upwardly and downwardly from said overlapping sections being in single thickness of fabric, substantially as described.

CHARLES ERLANGER.

Witnesses:

MURRAY HANSON,
WILLIAM H. BERRY.