

(No Model.)

D. RANKIN.
DOOR CHECK.

No. 453,915.

Patented June 9, 1891.

Fig. 1.

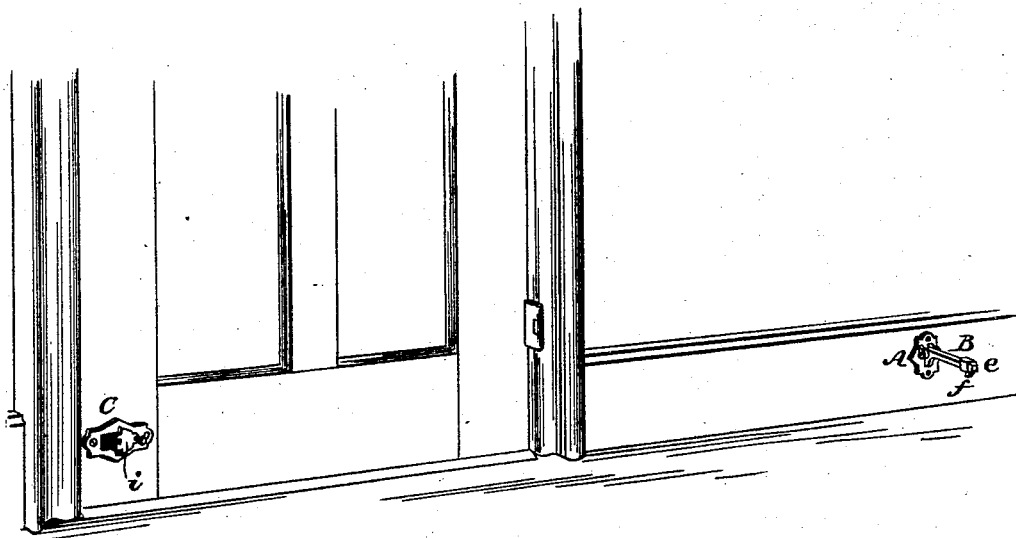
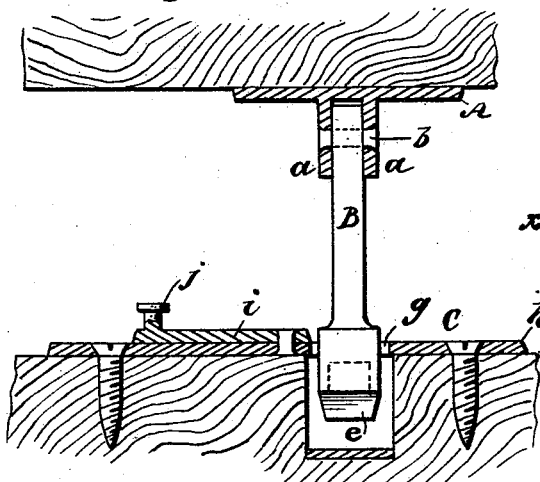
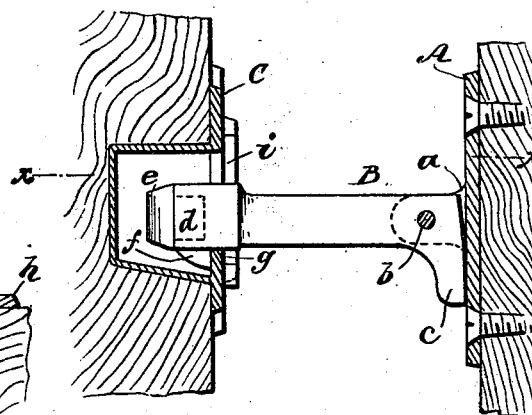


Fig. 3.



WITNESSES:
John H. Deemer
C. Sedgwick

Fig. 2.



INVENTOR:
D. Rankin
BY *Munn & Co*
ATTORNEYS

UNITED STATES PATENT OFFICE.

DAVID RANKIN, OF ROSAMOND, ASSIGNOR TO HIMSELF, AND ALBERT W. BERRY, OF PASADENA, CALIFORNIA.

DOOR-CHECK.

SPECIFICATION forming part of Letters Patent No. 453,915, dated June 9, 1891.

Application filed October 20, 1890. Serial No. 368,662. (No model.)

To all whom it may concern:

Be it known that I, DAVID RANKIN, of Rosamond, in the county of Kern and State of California, have invented a new and Improved Door Holder and Buffer, of which the following is a specification, reference being had to the annexed drawings, forming a part thereof, in which—

Figure 1 is a perspective view showing the application of my improvement with the door closed. Fig. 2 is a vertical longitudinal section with the door open, and Fig. 3 is a horizontal section taken on line *x x* in Fig. 2.

Similar letters of reference indicate corresponding parts in all the views.

The object of my invention is to provide a simple and effective device for arresting the motion of a door when thrown open, and for holding the door open.

My invention consists in a pivoted arm, provided with a beveled catch and furnished with a chamber in its free end for receiving an elastic buffer, and a socket adapted to be fitted to the door for receiving the end of the pivoted arm, and a plate for closing the socket when it is desired to use the device merely as a buffer.

The plate A, which is designed for attachment to the base-board or other portion of the wall, is apertured to receive the fasteningscrews, and is furnished with ears *a*, between which is pivoted the angled arm B upon the rivet *b*. The end *c* of the said angled arm B strikes the plate A when the arm is in a horizontal position, and serves as a stop for holding the arm in position to engage the socket C attached to the door.

In the free end of the arm B is formed a cavity *d* for receiving the elastic buffer *e*, which projects beyond the end of the arm. The free end of the arm B on its under surface is provided with a beveled lug *f* for engaging the lip *g* of the socket C. The socket C is provided with a flange or face-plate *h*, which is apertured to receive the screws by which it is attached to the door, and to the

said face-plate, at one side of the aperture in which the arm B is received, is pivoted a plate *i*, which may be turned so as to prevent the arm B from entering the cavity of the socket. The pivoted plate *i* is furnished with a handle *j*, for convenience in turning the said plate. The socket C is inserted in a mortise formed in the door and secured in place by screws, and the plate A is fastened to the base-board in such a position as to bring the end of the arm B opposite the opening of the socket C as the door is opened, so that as the lip *g* of the socket strikes the beveled lug *f* the arm B is lifted and the said beveled lug drops behind the lip *g*, thereby holding the door in an open position. Should the door be opened violently, the elastic buffer *e* arrests its motion by striking the bottom of the socket C.

When it is desired to use the device merely as a buffer, the pivoted plate *i* is turned so as to close the opening of the socket, when the buffer will strike the plate *i* instead of the socket.

Having thus described my invention, I claim as new and desire to secure by Letters Patent—

1. In a door holder and buffer, the combination, with a pivoted arm, of a socket into which the arm is adapted to enter and to be engaged thereby, provided with a pivoted plate for closing said socket, substantially as and for the purpose set forth.

2. In a door holder and buffer, the combination of the plate A, provided with the ears *a*, the angled arm B, pivoted between the ears *a* and provided with the beveled lug *f* and cavity *d*, the elastic buffer *e*, inserted in the said cavity, the socket C, provided with the lip *g*, and the pivoted plate *i*, adapted to close the opening of the socket, substantially as specified.

DAVID RANKIN.

Witnesses:

J. S. CHADBOURNE,
E. B. KINTON.