

(No Model.)

O. H. PIEPER & F. M. WATSON.
WALL FIXTURE FOR ELECTRICAL CONDUCTORS.

No. 454,226.

Patented June 16, 1891.

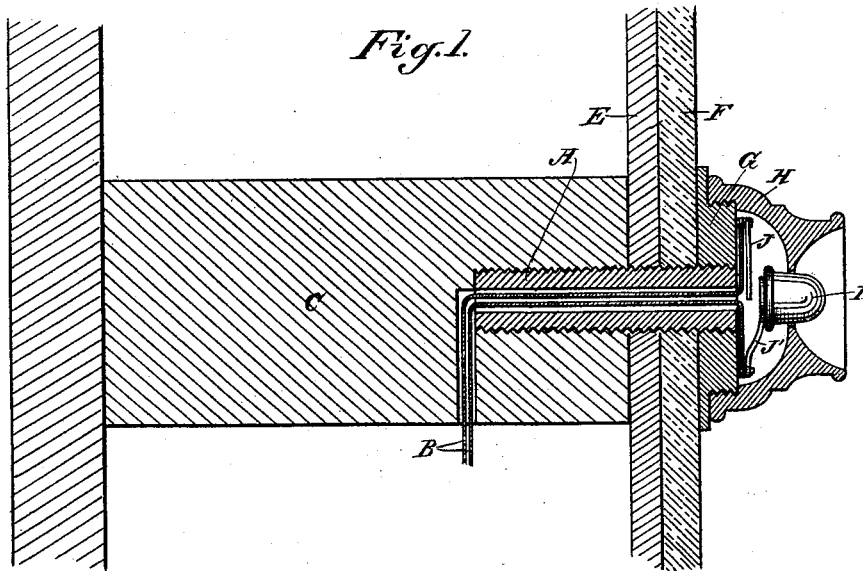
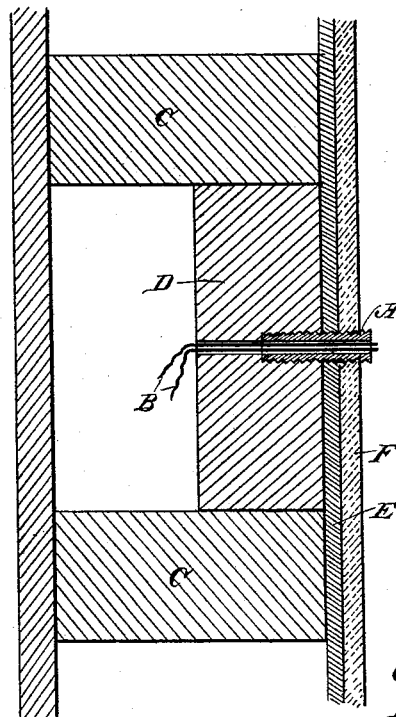


Fig. 2.



Witnesses,
J. H. Hourse
H. C. Lee.

Inventors,
Oscar H. Pieper
Frank M. Watson
By Dewey & Co. atts

UNITED STATES PATENT OFFICE.

OSCAR H. PIEPER AND FRANK MILTON WATSON, OF SAN JOSÉ, CALIFORNIA.

WALL FIXTURE FOR ELECTRICAL CONDUCTORS.

SPECIFICATION forming part of Letters Patent No. 454,226, dated June 16, 1891.

Application filed November 5, 1890. Serial No. 370,416. (No model.)

To all whom it may concern:

Be it known that we, OSCAR H. PIEPER and FRANK MILTON WATSON, citizens of the United States, residing at San José, Santa Clara county, State of California, have invented an Improvement in Wall-Fixtures for Electrical Conductors; and we hereby declare the following to be a full, clear, and exact description of the same.

Our invention relates to a device which we call a "wall-fixture for electrical conductors;" and it consists of a means for more accurately and rigidly fixing said conductors at points where they pass through plaster walls or other supports, and in certain details of construction, all of which will be more fully explained by reference to the accompanying drawings, in which—

Figure 1 is a sectional view showing our device applied at a point opposite a stud. Fig. 2 shows the manner of applying it between the studding.

In running electric wires for electrical purposes within buildings it is customary to bring the wires through the wall at such points as are necessary without regard to the proximity of a stud or other firm support, and the caps within which the electric buttons are contained are fastened by screws which often only enter the plaster, and the whole of the attachment is thus so loose that they frequently become detached, the wires are apt to become disarranged, and when the house is plastered they are either entirely covered up with the mortar or else large openings are left around them, which in either case is undesirable.

In our invention we employ a tube or bushing A, of suitable size and material to contain any number of wires, as B B, and this tube is screw-threaded or tapered upon the outside, so as to be screwed or clamped or driven directly into a stud C or other support, or into a transverse piece of wood D, which is fixed so as to extend across between two studs and just under the line of lath and plaster. The outer end of this tube extends out through the lath and plaster E F, and the plaster may be brought up and finished

smoothly around the outside of the tube, leaving the end of it projecting a short distance through the plaster. Upon the outer end of this tube is screwed a collar G, having screw-threads upon it around the outside, and upon these screw-threads the cap H, containing the push-button I, may be screwed, this cap being screw-threaded on the inside. Within this cap and upon the surface of the collar G the ends of the wires B B are connected with metallic contact-plates J J', the latter of which is connected with the push-button I in the usual manner or otherwise. From the bottom of the hole into which the tube A screws we make a hole or opening leading through the side of the stud or the piece into which the tube is screwed, so that the wires may be conveniently led to their destination. This also gives a firm support to the wires, so that they are not likely to be pulled from their places or disturbed and prevents any ingress of mice or other vermin through the openings which may be made for the passage of the wires.

Having thus described our invention, what we claim as new, and desire to secure by Letters Patent, is—

1. A wall-fixture for electrical conductors, consisting of the tube adapted to receive the conducting-wires, having its outside adapted to be fixed into the studding or wood-work within the wall, and an exterior collar fitted to said tube and adapted to receive the cap containing the push-button, substantially as herein described.

2. A tube or bushing adapted to be fixed in the wall to form a guide for the wires and having its outer end threaded and projecting beyond the wall, in combination with a cap fitted over the end of the tube and having the push-button and contacts within it, substantially as herein described.

In witness whereof we have hereunto set our hands.

OSCAR H. PIEPER.

FRANK MILTON WATSON.

Witnesses:

A. E. AVERRETT,

CHAS. H. PIEPER.