

(No Model.)

E. ALLDAY.
SHADE HOLDER.

No. 454,675.

Patented June 23, 1891.

Fig. 3.

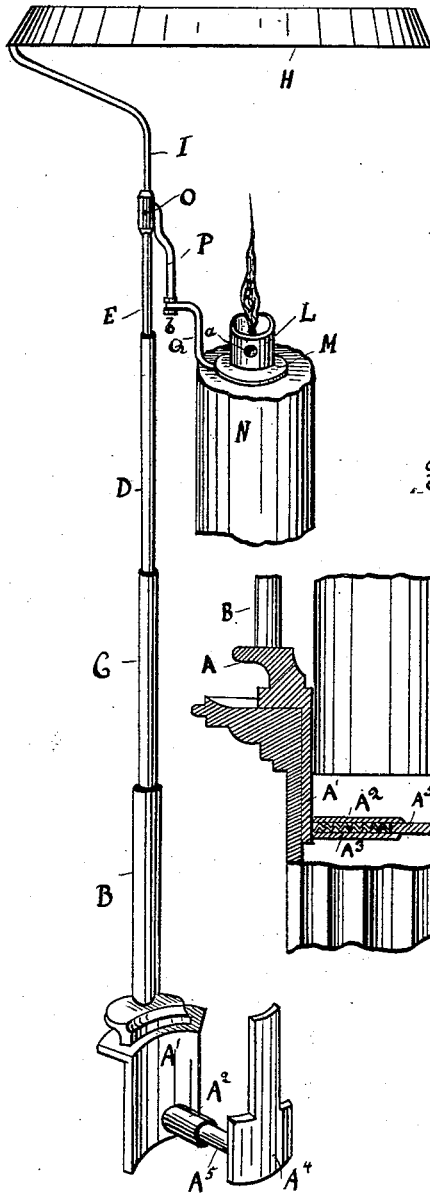


Fig. 2.

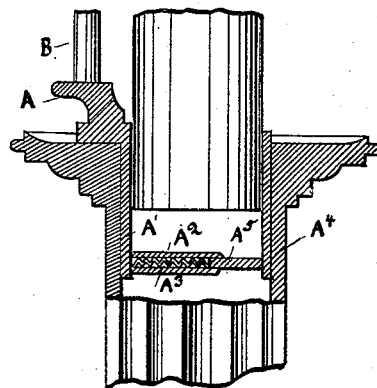
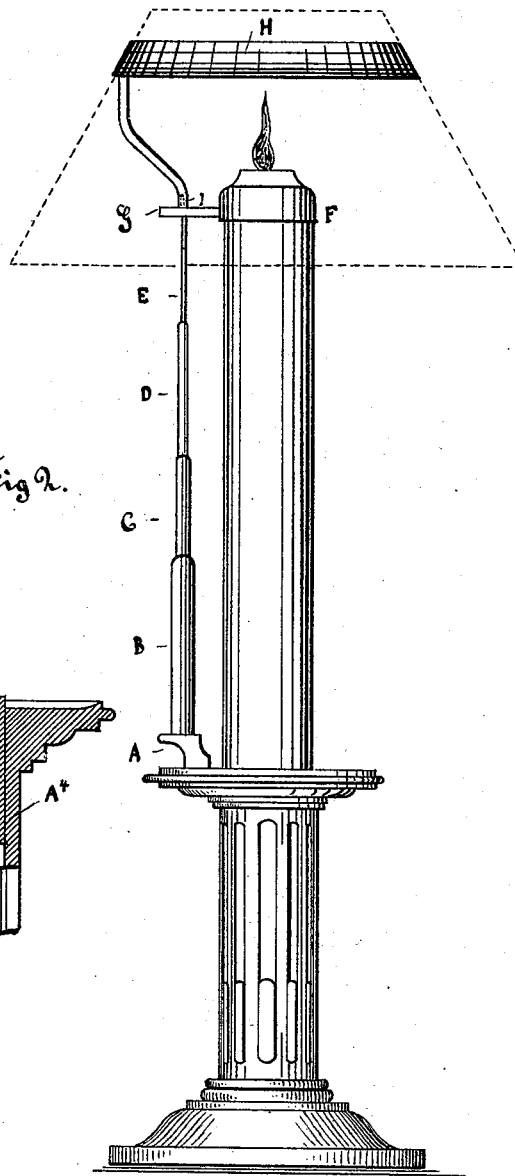


Fig. 1.



WITNESSES:

Th. Franke.
Meinher

INVENTOR

Edward Allday
BY *Joseph R. Rogers*
ATTORNEYS.

UNITED STATES PATENT OFFICE.

EDWARD ALLDAY, OF EGHAM, ENGLAND.

SHADE-HOLDER.

SPECIFICATION forming part of Letters Patent No. 454,675, dated June 23, 1891.

Application filed September 15, 1890. Serial No. 365,026. (No model.) Patented in England November 2, 1888, No. 15,820; in Germany February 20, 1889, No. 47,224, and in France May 2, 1889, No. 184,796.

To all whom it may concern:

Be it known that I, EDWARD ALLDAY, a subject of Victoria, Queen of Great Britain and Ireland, and a resident of Wickham Lodge, Egham, in the county of Surrey, England, have invented certain new and useful Improvements in Shade-Holders, (for which I have obtained Letters Patent in Great Britain, No. 15,820, dated November 2, 1888; in Germany, No. 47,224, dated February 20, 1889, and in France, No. 184,796, dated May 2, 1889,) of which the following is a specification.

My invention is designed to produce a shade-holder for candle-sticks and the like which shall automatically be maintained at a regulated distance from the lighted wick.

The invention consists in the combination, with a candle-holder fitting in the candlestick-socket, of a series of telescoping tubes on said socket and supporting a shade-holder and collar or apertured cap fitting and resting upon the top of the candle.

The invention also consists in the construction and combination of parts and details, which will be fully described hereinafter, and finally pointed out in the claim.

Referring to the accompanying drawings and to the letters of reference marked thereon, Figure 1 is a general elevation of my automatic shade-holder. Fig. 2 is a section of the lower part of the same, showing the method I prefer to adopt of fixing the holder into a candlestick; and Fig. 3 is a perspective view of the same detached and showing a modified construction.

In carrying my invention into practice I arrange a candle-holder A, fitting into the mouth or socket of the candlestick, and this said holder may be either an ordinary holder, forming, when placed in the mouth or socket of the candlestick, part of the said candlestick, or it may be a loose skeleton holder fitted with a spring device, as hereinafter described, and adapted to fit into various-sized candlesticks. The holder A carries an upright tube B fixed thereon or thereto, and sliding within this and telescoping therein and one into the other are two tubes C D. Sliding within the tube D, I arrange a rod or wire E, capable of extending beyond the top

of the candle and carrying a collar F, (shown in Fig. 1,) fitted by a lug or ring G somewhat below the top of the said wire or rod E. The actual shade-holder H fits by a tubular socket I or otherwise on the top of the wire or rod E, or may be attached thereto.

In using my shade-holder the collar F is placed over or on the top of the candle, the telescoping tubes being raised according to the height of the candle, as also the wire or rod E, carrying the collar and shade-holder; and it will be seen that by using various lengths and numbers of telescoping tubes any reasonable height of candle may be provided for. Suitable stops prevent the tube or rod being entirely withdrawn.

I prefer to use a skeleton spring-holder constructed as follows, and which may be inserted into any ordinary candlestick:

Referring to Fig. 2, A' is one side of the holder, from the bottom of which projects a hollow arm or casing A², within which works a spring A³ and tube or rod A⁴, said tube or rod carrying at its extremity a plate A⁴, curved to fit the candlestick. The spring being compressed, the holder may be placed in the socket of the candlestick and on being released the opposite ends are forced apart and kept close up to the socket of the candlestick, so maintaining the holder in position; or in place of the ring or collar F, Fig. 1, I may use a small tube or cylinder L, Fig. 3, mounted on a flat base or flange M, through which the wick protrudes, the cylinder or tube surrounding the wick, and the base or flanged portion resting on the top of the wax N or composition of which the candle is composed. I perforate the upper portion or cylinder transversely, as at a, to allow of the melted wax or composition flowing freely to feed the wick.

This appliance is connected to the telescopic device as follows: On the top rod I, carrying the shade-holder H, I arrange a loose sleeve or collar O, Fig. 3, capable of sliding up and down the same, and to this I fix a downwardly-projecting bar P, terminating in a small boss or stop b, above which is pivoted a bent arm Q, carrying the aforesaid appliance, to which it may be attached by any well-known means.

Having thus described my invention, I
claim as new and desire to secure by Letters
Patent—

5 In shade-holders for candlesticks and the
like, the skeleton holder or socket A, com-
posed of the curved plates A' A⁴, the tubes
A² and A⁵, projecting from said plates and
sliding one within the other, and the spring
A³, substantially as set forth.

In witness whereof I have hereunto set my
hand in the presence of two witnesses.

EDWARD ALLDAY.

Witnesses:

ALF. E. WHITE,

17 Southampton Buildings, London, W. C.

JOSEPH LAKE,

28 Southampton Buildings, Holborn.