

(No Model.)

R. LEE.
STALL FLOOR.

No. 454,745.

Patented June 23, 1891.

Fig. 1.

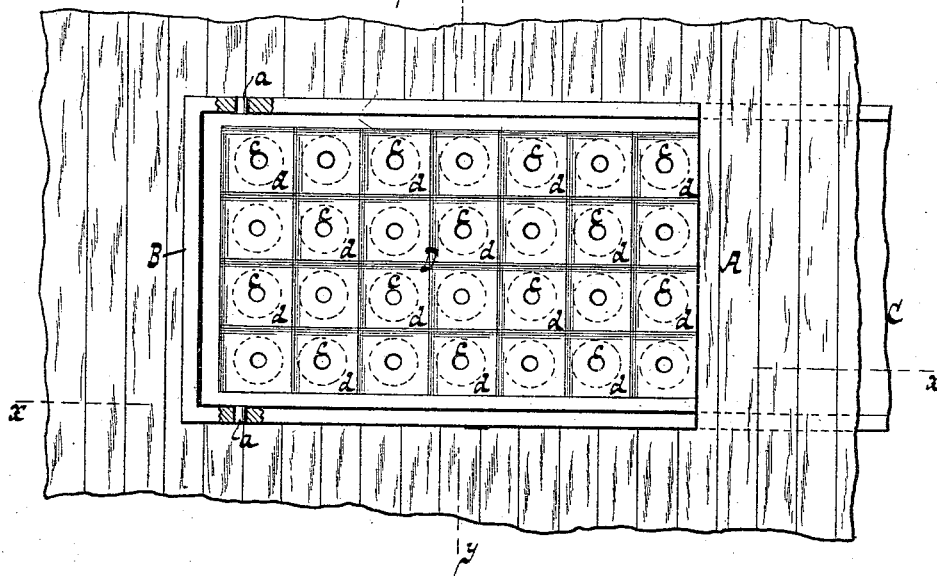


Fig. 2.

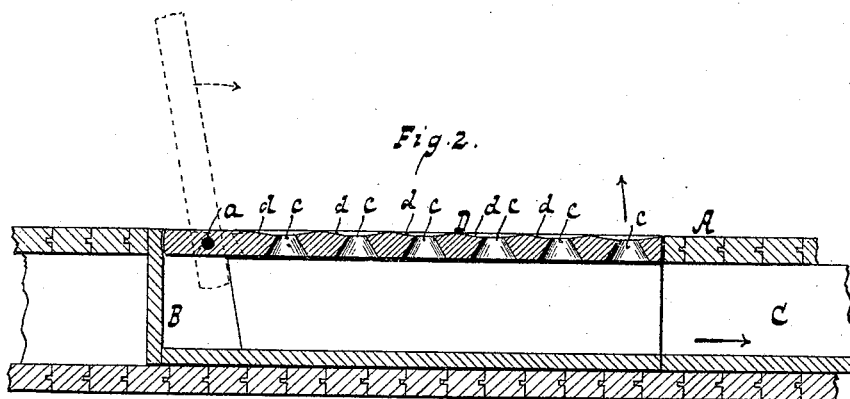
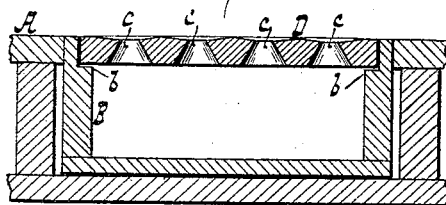


Fig. 3.



WITNESSES:
William Miller
Edward Wolff

INVENTOR:
Richard Lee
BY
Van Santvoord & Hauff
ATTORNEYS

UNITED STATES PATENT OFFICE.

RICHARD LEE, OF BROOKLYN, NEW YORK.

STALL-FLOOR.

SPECIFICATION forming part of Letters Patent No. 454,745, dated June 23, 1891.

Application filed March 5, 1891. Serial No. 383,830. (No model.)

To all whom it may concern:

Be it known that I, RICHARD LEE, a citizen of the United States, residing at Brooklyn, in the county of Kings and State of New York, have invented new and useful Improvements in Stall-Floors, of which the following is a specification.

This invention relates to a novel grating for stall-floors, as pointed out in the following specification and claim, and illustrated in the accompanying drawings, in which—

Figure 1 is a plan or top view. Fig. 2 is a longitudinal section in the plane $x x$, Fig. 1. Fig. 3 is a transverse section in the plane $y y$, Fig. 1.

In the drawings, the letter A designates the floor, into which is fitted the box B, which is open at one end and communicates with the drain C.

The box B is provided with a cover D, which swings on a pintle a , and which, when closed, is flush with the floor A, and supported by shoulders $b b$, formed on the sides of the box. (See Fig. 3.) Said cover is provided with a series of small holes $c c$, which form the centers of shallow cavities $d d$, formed in the upper surface of the cover, while said holes are

countersunk or made tapering below, so that a strainer is formed which permits the liquid to escape freely, while it retains the solid matters, the upper surface of said strainer being sufficiently smooth so that the solid matters can be readily swept off, and the stall can easily be kept clean and dry.

The cover D can be readily made of cast metal, and its surface, being provided with the cavities $d d$, affords a good resting-place for the feet of a horse or other animal.

What I claim as new, and desire to secure by Letters Patent, is—

A stall-floor consisting of a box communicating with a drain and provided with a cover having shallow cavities d in its upper surface, and holes c , leading from the cavities and gradually increasing in diameter toward the under surface of the cover, substantially as described.

In testimony whereof I have hereunto set my hand in the presence of two subscribing witnesses.

RICHARD LEE.

Witnesses:

WM. C. HAUFF,
E. F. KASTENHUBER.