

(No Model.)

A. F. BAUMER.
ALTAR CANDLE.

No. 455,501.

Patented July 7, 1891.

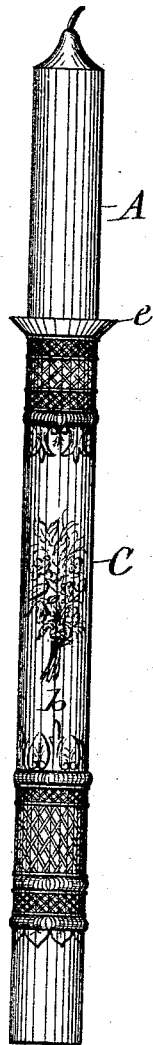


Fig. 1

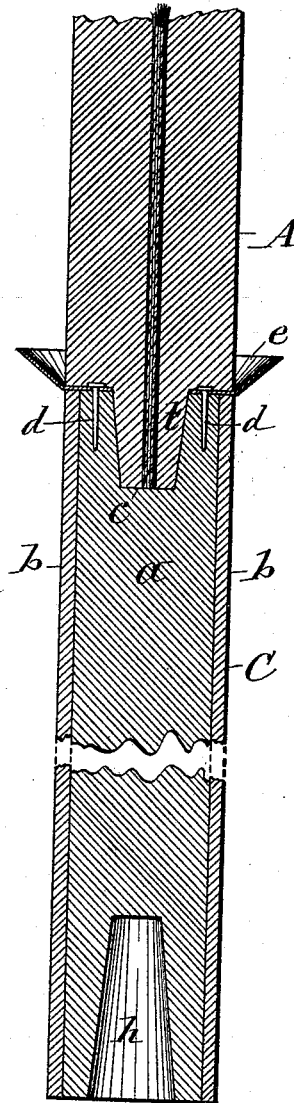


Fig. 2

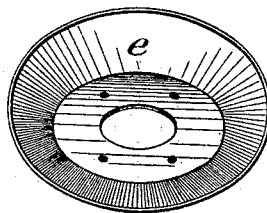


Fig. 3

WITNESSES:

C. L. Bendixon
H. M. Seaman

INVENTOR:

Anton F. Baumer,
BY
Hull, Lassar & Hull
ATTORNEYS

UNITED STATES PATENT OFFICE.

ANTON F. BAUMER, OF SYRACUSE, NEW YORK.

ALTAR-CANDLE.

SPECIFICATION forming part of Letters Patent No. 455,501, dated July 7, 1891.

Application filed April 9, 1890. Serial No. 347,162. (No specimens.)

To all whom it may concern:

Be it known that I, ANTON F. BAUMER, of Syracuse, in the county of Onondaga, in the State of New York, have invented new and useful Improvements in Altar-Candles, of which the following, taken in connection with the accompanying drawings, is a full, clear, and exact description.

My invention is designed to be used in connection with altar-candles; and the object of the invention is to reduce the expenses of the use of said candles without detracting from their usual ornamental appearance.

The invention consists in certain novel improvements, as hereinafter more fully described, and specifically set forth in the claim.

In the annexed drawings, Figure 1 is a side view of a candle with a holder embodying my invention. Fig. 2 is an enlarged longitudinal sectional view of the same, and Fig. 3 is a detached perspective view of the drip-plate.

A represents the candle, and C the holder, which latter is of the same diameter externally as the candle, and, in fact, is of the form of a section or extension of the candle. Said holder I form of a prolonged cylindrical solid body *a*, of wood or papier-maché or other suitable material of sufficient stiffness to render it self-sustaining and of a character which allows the coat *b* to firmly adhere to it. This coat envelops the body *a* and is composed of the same or similar material as that of the candle A, which latter is usually composed of wax. The body *a* I form with a socket *c* in its upper end, and the base of the candle A is formed with a tenon *t*, by which it is seated in the socket *c*, as shown in Fig. 2 of the drawings.

To protect the holder C from the drippings from the candle A, I interpose between them the drip-plate *e*, which is preferably of the form of a saucer, provided with a central aperture of the same or slightly greater diameter than the top of the socket *c*. This drip-plate is placed upon the top of the holder C, with the aperture of the former over the socket of the latter, and may be fastened to the holder by means of nails or screws *d d*

passing vertically through the horizontal portion of the plate and down into the solid portion of the holder surrounding the socket *c*. The rim of the drip-plate projects from the exterior of the holder to catch the drippings from the candle A. The lower end of the body I also form with a socket *h* in its center for fastening it to its support.

The height of the present altar-candle and holder is very objectionable. The candle now used, when placed in a holder, is about four feet high and presents an ungainly appearance, being altogether out of proportion with the surrounding objects. It is one of the objects of the present invention to overcome this objection, and it is accomplished by making the holder as above described, so that the candle to be burned may be but a very short piece, just of sufficient length to burn for the desired time, and at the same time the whole will present the appearance of a highly-ornamented candle, such as is now in general use, and of a height proportionate with the usual altar decorations. A candle-holder thus constructed presents the appearance of the lower and main portion of a candle, and therefore obviates the necessity of buying such expensive candles, which are usually made of a length extending to the bottom of the holder C, and inasmuch as the lower portion of the candle is never used and always wasted the employment of the described holder obviates such waste.

Having described my invention, what I claim as new, and desire to secure by Letters Patent, is—

As a new article of manufacture, a composite candle comprising a body of wood or similar material incased within a material in imitation of the exterior of a candle and adapted to seat a burning portion at one end and provided at the other end with means for securing it to the altar or other place.

In testimony whereof I have hereunto signed my name this 3d day of April, 1890.

ANTON F. BAUMER. [L. S.]

Witnesses:

MARK W. DEWEY,
J. J. LAASS.