

(No Model.)

4 Sheets—Sheet 1.

E. D. NELLIS.
CONSTRUCTION OF STOVES.

No. 456,223.

Patented July 21, 1891.

Fig 1.

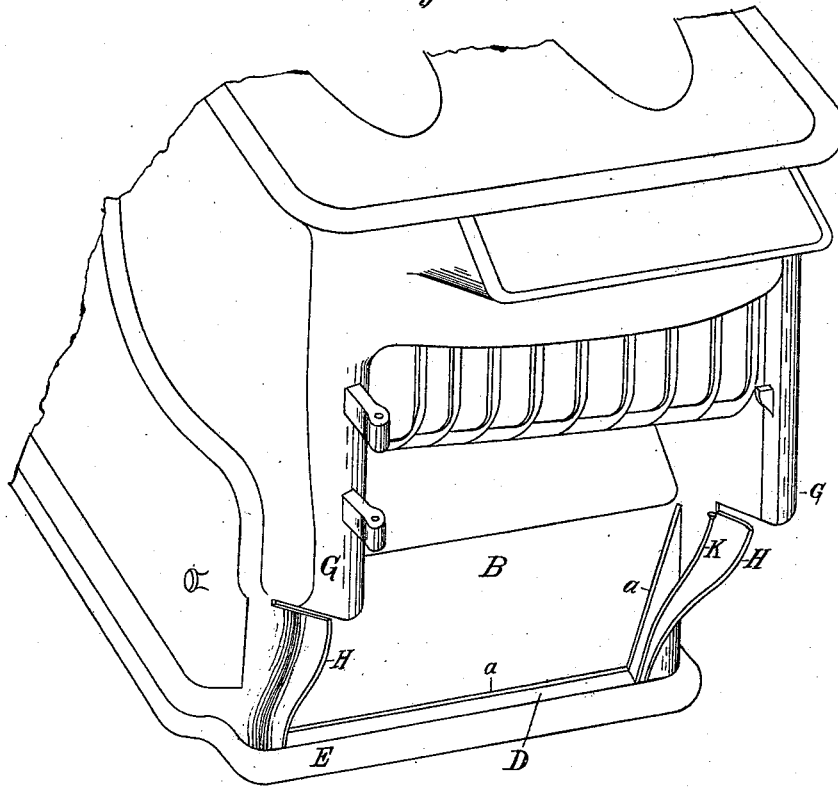
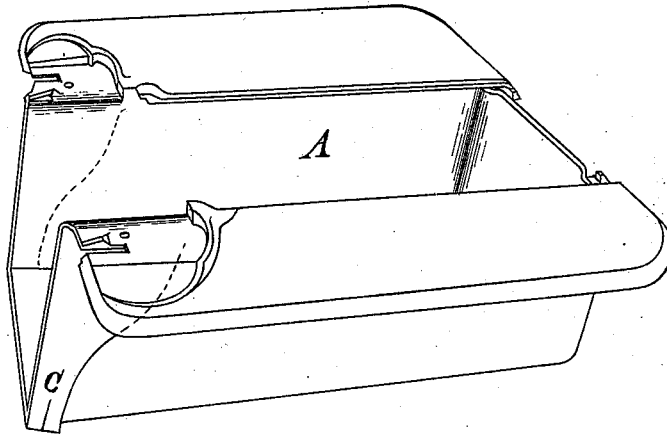


Fig 2.



Witnesses.
J. W. Crookes.
A. R. Ames.

Inventor.
Emery D. Nellis by
Paul Bakerell
his Attorney.

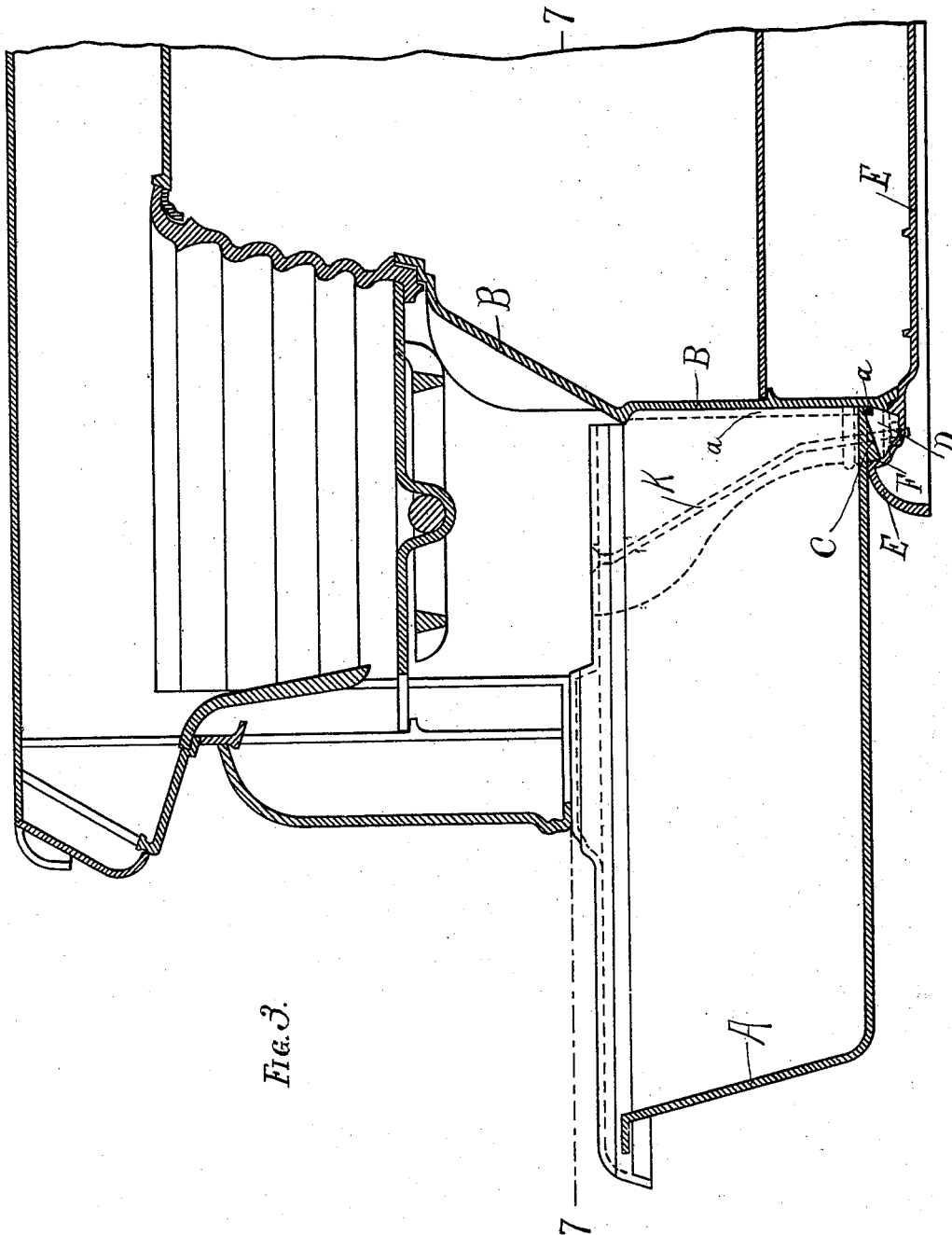
(No Model.)

4 Sheets—Sheet 2.

E. D. NELLIS.
CONSTRUCTION OF STOVES.

No. 456,223.

Patented July 21, 1891.



WITNESSES.

WITNESSES.
J. K. S. S. S. S.
J. M. Crocker

INVENTOR.

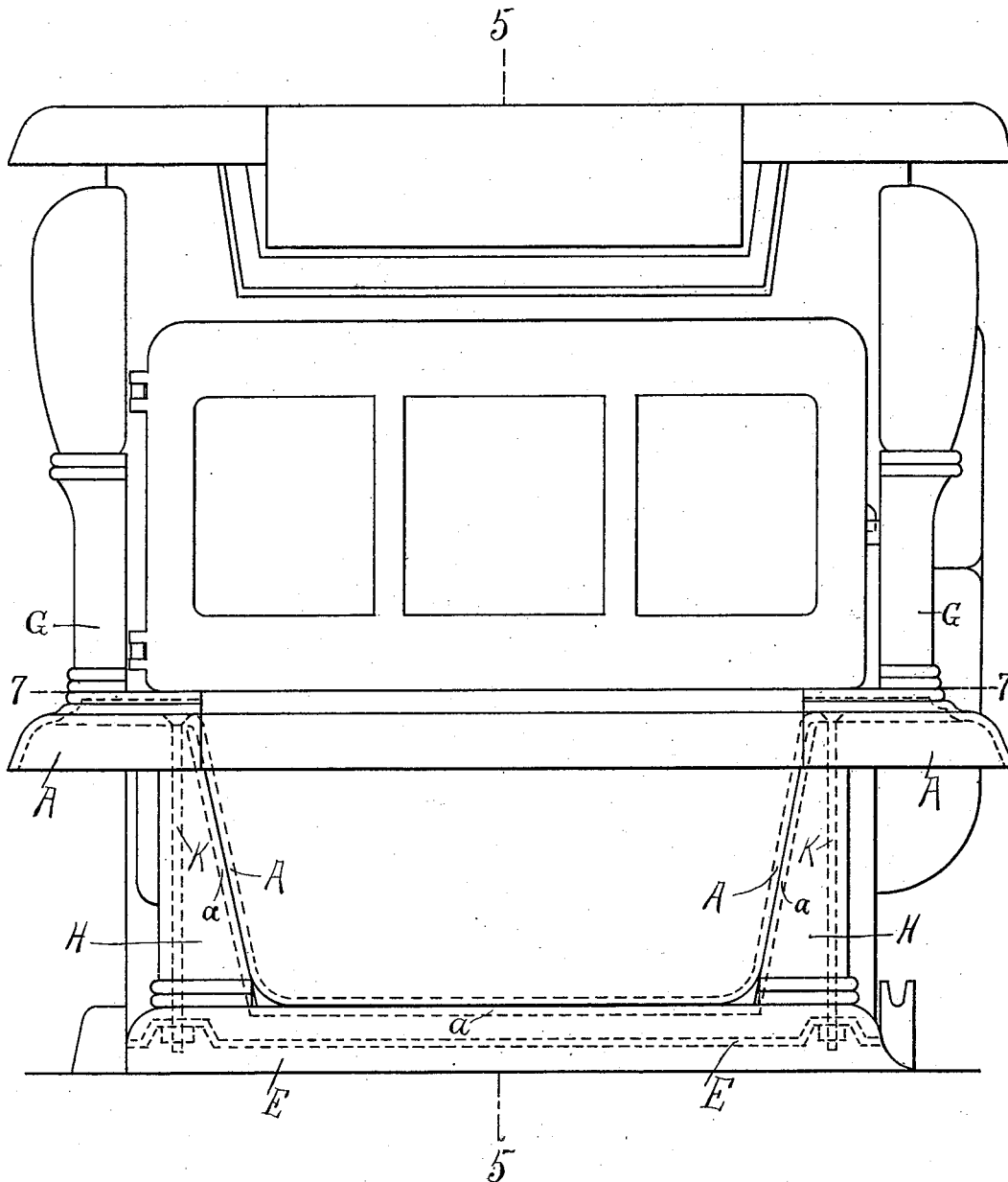
Ernest D. Nellis by
Paul Bucknall,
his attorney

E. D. NELLIS.
CONSTRUCTION OF STOVES.

No. 456,223.

Patented July 21, 1891.

Fig. 4.



WITNESSES.

W. H. R. [Signature]
McGraw.

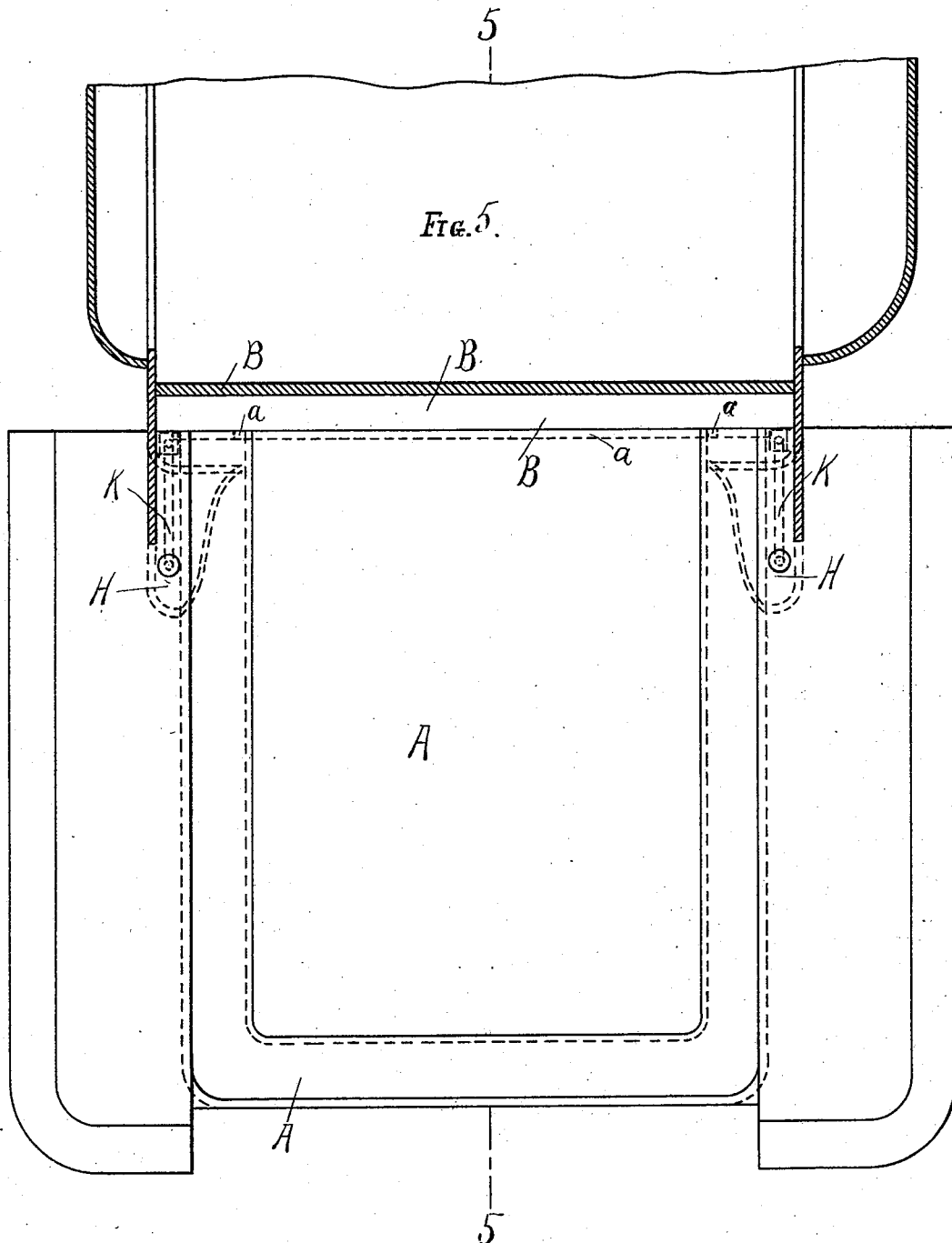
INVENTOR.

Emory D. Nellis
Paul B. Kewell,
his attorney

E. D. NELLIS.
CONSTRUCTION OF STOVES.

No. 456,223.

Patented July 21, 1891.



WITNESSES.

J. M. Gurnsey
J. M. Gurnsey

INVENTOR.

Emery D. Nellis
Paul Becknell,
his attorney

UNITED STATES PATENT OFFICE.

EMERY D. NELLIS, OF ST. LOUIS, MISSOURI, ASSIGNOR TO THE BRIDGE & BEACH MANUFACTURING COMPANY, OF SAME PLACE.

CONSTRUCTION OF STOVES.

SPECIFICATION forming part of Letters Patent No. 456,223, dated July 21, 1891.

Application filed July 26, 1890. Serial No. 360,030. (No model.)

To all whom it may concern:

Be it known that I, EMERY D. NELLIS, a citizen of the United States, residing in the city of St. Louis and State of Missouri, have invented a certain new and useful Improvement in the Construction of Stoves, of which the following is a full, clear, and exact description.

My invention relates to improvements in the form and design of parts of stove-patterns, and has for its object, first, to facilitate the framing of the stoves made from such patterns, and, secondly, in the framed stove to provide parts formed in such manner that when framed together they shall make better joints and less broken walls to such parts of the stove to which the improvements relate.

My invention consists in an improved form of pattern for the sunk hearth and ash-pit of cooking stoves and ranges, and in the method, consequent on such change in the patterns, of securing such parts in the framing of the stove as a whole to the body of the stove.

The details of the form and construction of the said improvements pointed out in the specification and more particularly in the claims are illustrated in the accompanying drawings, in which like letters of reference denote like parts in the several figures.

Figure 1 is a perspective view of a cooking-stove with the hearth detached. Fig. 2 is a perspective view of the hearth. Fig. 3 is a vertical section taken on line 5 5 of Fig. 4. Fig. 4 is a front elevation with the hearth shown in place. Fig. 5 is a longitudinal section taken on line 7 7 of Fig. 3.

In general practice the hearth-piece is formed so as to meet the extended side plates of the stove, the projecting parts of the fire-box, and the front oven-plate, and are secured thereto, making an uneven and irregularly-formed interior to the ash-pit.

By my improvement I am enabled to form the ash-pit with smooth sides and bottom, the back of the same being formed by the exterior surface of the front oven-plate, thereby making an ash-pit which can be easily kept clean, and, what is more important, a combination of parts of such shape and design that permits of their being much more readily put

together in framing the stove and more effectively secured together.

My improvement lies in forming the hearth-piece A long enough to reach back to the front oven-plate B, the end fitting in a framing against the oven-plate formed by the flange-shoulder *a*, formed in the oven-plate casting and fitting around the end of the hearth-casting, (shown in Figs. 1 and 4,) the extended body side plates fitting around the body of the same. The principal feature of novelty and improvement is, however, in forming the under side of the back edge of the hearth-casting with an inclined lip or projection C, running lengthwise to that edge. (Shown in section in Fig. 3.)

The lip C is formed, as shown in the drawings, with a gentle or wedge-shaped incline at the back, the front side being formed with a more abrupt or shoulder-like incline, there being a correspondingly-shaped recess or place D formed in the bottom of the plate E to receive the same when the stove is put together, forming an abutting shoulder F, in order to retain the parts together, as herein-after described.

In framing the stove with my improved hearth and ash-pit piece the body is put together, the side plates H, bottom plates E, top plates, and front oven-plate B being loosely secured in position. Finally the hearth-casting A is pushed in between the extended side plates, in under the projecting fire-box side plates G, until the back edges of the same rest against the front oven-plate B in the frame formed by the shoulder *a*. In doing this the whole frame of the stove is slightly raised until the lip C is slipped over the shoulder F, which retains it in position. The whole is then secured together, preferably by the long clamping-bolt K, said bolt having one end passing through and being secured to the side plates of the hearth and its other end passing down through an opening in the piece E, said piece E having a countersink formed therein for the reception of a nut adapted to be secured on the bolt K to hold the same in place.

I claim—

1. In a stove, a sunk hearth-piece extending

back to the front oven-plate beneath the fire-pot, said hearth forming an ash-pit with continuous smooth sides and bottom, substantially as and for the purposes described.

5 2. In a stove, the combination, with the front oven-plate and a bottom plate having a recess forward of the front oven-plate, of a hearth-plate abutting against the front oven-plate and having a shoulder which fits in the
10 recess in the bottom plate, substantially as and for the purposes described.

3. In a stove, the combination, with the oven and bottom plates, said bottom plate having a recess forward of the front oven-
15 plate, of a hearth having a lip adapted to rest in said depression in the bottom plate, side plates against which the flanges of the hearth abut, and a bolt which passes through said

side plates and bottom plate for securing said parts together, substantially as and for the 20 purposes described.

4. In a stove, the combination, with the front oven-plate having a shoulder thereon, of a bottom plate having a recess forward of the front oven-plate, a sunken hearth having 25 a lip adapted to fit in said recess, and means for connecting the several parts, substantially as and for the purposes described.

In testimony whereof I affix my signature, in presence of two witnesses, this 8th day of 30 July, 1890.

EMERY D. NELLIS.

Witnesses:

W. RAMES,

JOS. W. CROOKES.