

(No Model.)

N. P. MULLOY.

DEVICE FOR SECURING WATCH HANDS TO CARDS.

No. 456,335.

Patented July 21, 1891.

Fig. 1.

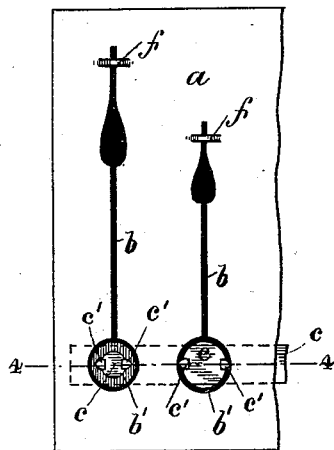


Fig. 2.

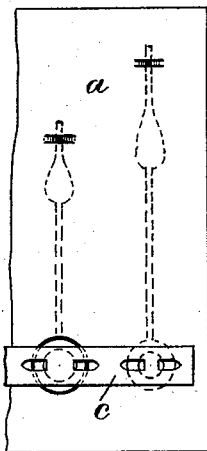


Fig. 3.

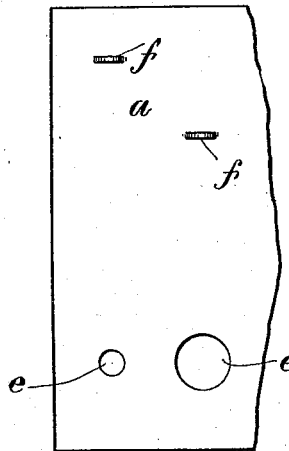


Fig. 4.

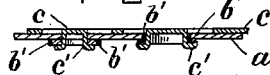


Fig. 5.

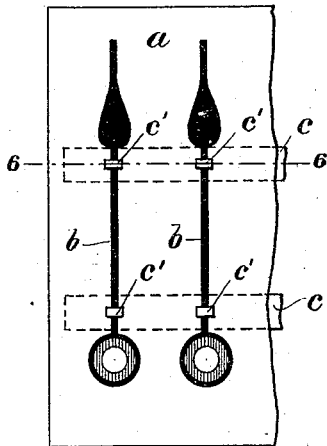
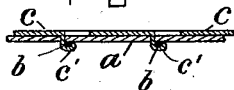


Fig. 6.



WITNESSES.

J. Henry Marsh.
A. J. Habin.

INVENTOR.

N. P. Mulloy
By Night Brown Crossley
Attys.

UNITED STATES PATENT OFFICE.

NATHAN P. MULLOY, OF WALTHAM, MASSACHUSETTS, ASSIGNOR TO THE
AMERICAN WALTHAM WATCH COMPANY, OF SAME PLACE.

DEVICE FOR SECURING WATCH-HANDS TO CARDS.

SPECIFICATION forming part of Letters Patent No. 456,335, dated July 21, 1891.

Application filed December 13, 1889. Serial No. 333,648. (No model.)

To all whom it may concern:

Be it known that I, NATHAN P. MULLOY, of Waltham, in the county of Middlesex and State of Massachusetts, have invented certain new and useful Improvements in Devices for Securing Watch-Hands to Cards, of which the following is a specification.

This invention has for its object to provide improved means for securing watch-hands to the cards which hold them when they are sent out from the place of manufacture.

Heretofore watch-hands have been attached to said cards by means of silk or other thread running continuously across the card and formed into a series of loops, which engage and hold the hands laid upon one side of the card. This method is objectionable, first, because the thread is liable to be accidentally broken, thus releasing the entire series of hands, and, secondly, because when the thread is cut to release one or more of the hands, the whole series of hands is loosened, and those not required for use are liable to drop off from the card.

My invention consists in a holder having a series of flexible clips or prongs formed upon it, said holder being made in the form of a strip of metal and used in connection with a card and a series of hands, the said prongs being passed through perforations in the card and engaged with suitable portions of the hands, the latter being placed on the front and the strip on the back side of the card.

In the accompanying drawings, forming a part of this specification, Figure 1 represents a front view of a portion of a card of watch-hands embodying my invention. Fig. 2 represents a back view of the same. Fig. 3 represents a front view of the card without the hands and their pronged holding-strip. Fig. 4 represents a section on line 4 4, Fig. 1. Fig. 5 represents a front view of a card, showing a modification. Fig. 6 represents a section on line 6 6, Fig. 5.

The same letters of reference indicate the same parts in all of the figures.

In the drawings, *a* represents the card, *b* the hands, and *c* the pronged holding-strip, the latter being made from a thin sheet of

any suitable metal, preferably brass, and provided with a series of prongs *c'*, here shown as cut from the metal of the strip and bent outwardly therefrom, although the prongs may be made in separate pieces and suitably attached to the strip, if preferred. The strip is placed on the back of the card *a*, and its prongs are passed through the card and bent over any suitable part or parts of the hands *b*, which are placed upon the front of the card.

In Figs. 1, 2, and 4 I have shown the prongs inserted in the orifices in the collars *b'* of the hands and bent outwardly over the edges of said collars, the card having been previously provided with perforations *e*, Fig. 3, to receive the annular shoulders formed on said collars. In this case the points or outer ends of the hands are engaged with loops *f*, formed by cutting parallel slits in the card.

In Fig. 5 I show two strips *c*, and the prongs *c'* thereof are bent over the shanks of the hands, as shown in Fig. 6. It will be seen that the continuous metallic strip, with its prongs, furnishes a means for securely attaching the hands to the card and permitting the independent removal of one or any other desired number of hands without disturbing or loosening the others. The fastening-strip may be engaged with the card and hands by mechanism contrived for this purpose, so that the entire series of hands may be applied simultaneously.

I claim—

A card having a series of round holes and a series of watch-hands having their annular shoulders fitted therein, in combination with a continuous metallic strip located on the back of the card and having a series of prongs extending through the card and bent over the hands, substantially as described.

In testimony whereof I have signed my name to this specification, in the presence of two subscribing witnesses, this 23d day of November, A D. 1889.

NATHAN P. MULLOY.

Witnesses:

WM. H. WRENN,
E. A. MARSH.