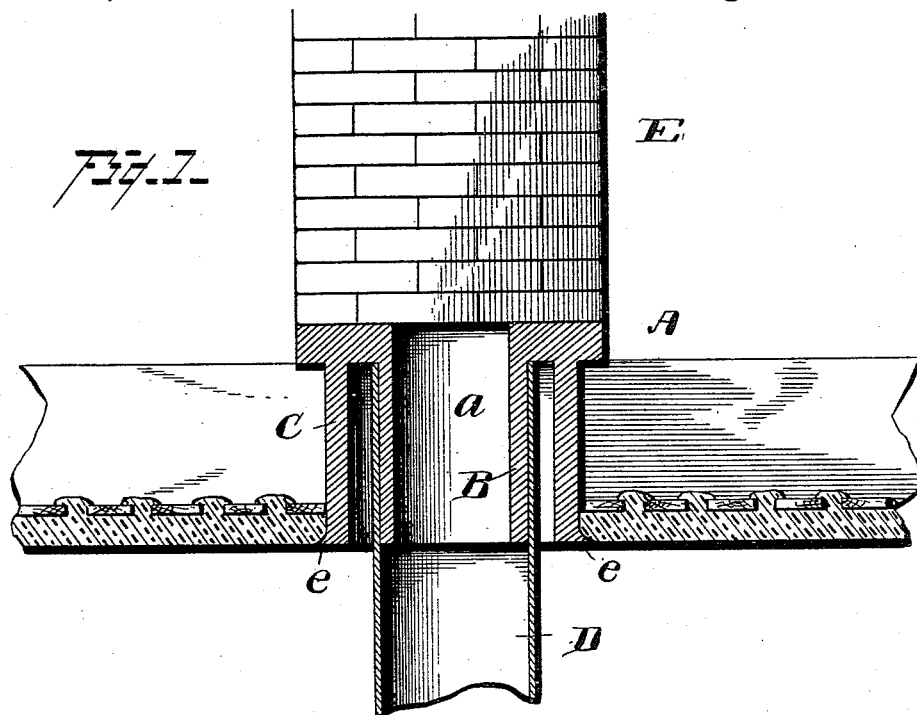


(No Model.)

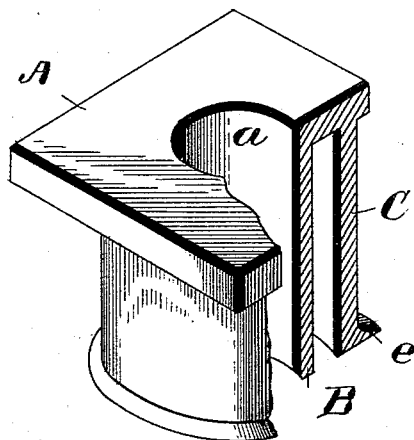
J. K. DEVORE.  
CHIMNEY PLATFORM.

No. 458,416.

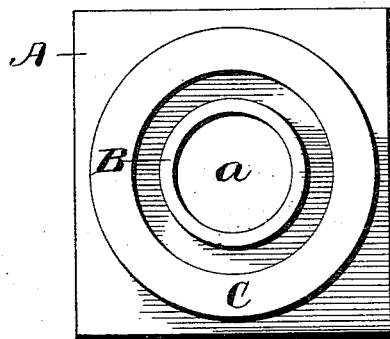
Patented Aug. 25, 1891.



*Fig. 2.*



*Fig. 3.*



Witnesses  
*Albert Spuden.*  
*Van Buren Hillyard.*

Inventor  
*James K. Devore.*  
By his Attorneys  
*R. H. P. Lacey*

# UNITED STATES PATENT OFFICE.

JAMES K. DEVORE, OF JEWETT, OHIO, ASSIGNOR OF ONE-HALF TO RICHARD LINTON BRADEN, OF SAME PLACE.

## CHIMNEY-PLATFORM.

SPECIFICATION forming part of Letters Patent No. 458,416, dated August 25, 1891.

Application filed May 1, 1891. Serial No. 391,245. (No model.)

*To all whom it may concern:*

Be it known that I, JAMES K. DEVORE, a citizen of the United States, residing at Jewett, in the county of Harrison and State of Ohio, have invented certain new and useful Improvements in Chimney-Platforms; and I do hereby declare the following to be a full, clear, and exact description of the invention, such as will enable others skilled in the art to which it appertains to make and use the same.

This invention relates to a platform or support for constructing chimneys on when the same are started at the ceiling of any floor of a dwelling or other structure, and which will admit of the connection therewith of a stove-pipe and prevent the escape of wet and soot at the joint between the said platform and the stove-pipe.

The improvement consists, essentially, of a platform or base which is apertured at or near its center and from which depend two concentric shells, the inner shell being in line with the said opening in the base and the outer shell having an outer flange at its lower or free end to overlap and form a support for the contiguous plastering on the ceiling below the floor on which the device is applied.

The improvement also consists of the novel features and the peculiar construction and combination of the parts, which will be hereinafter more fully described and claimed, and which are shown in the annexed drawings, in which—

Figure 1 is a cross-section of a floor, showing the relative position of the invention and a portion of a chimney constructed thereon, the device being in section. Fig. 2 is a perspective view of the invention, parts being broken away. Fig. 3 is a bottom plan view of the invention.

The support is constructed of pottery-ware or cast-iron and comprises the platform or base A, which may be of any desired form and size, and which is apertured at *a*, and the concentric shells B and C. The inner shell B is in line with the opening *a* and in service receives the stove-pipe D, which is slipped thereon. The outer shell C, of substantially

the same length as the inner shell B, is provided at its lower end with the exterior flange *e*, which, as shown in Fig. 1, overlaps and forms a support for the plastering contiguous to and bordering on the opening through which the shell C projects in the ceiling.

In the application of the invention it is placed in the flooring and supported between two joists in any approved manner and the chimney E is constructed on the base A. The plastering on the ceiling comes flush with the lower end of the shell C, and the flange *e* overlaps and supports the plastering around the shell. The space between the two shells receives the stove-pipe, and is sufficiently wide to prevent dangerous heating of the exterior shell C. Wet and soot dropping down the chimney will continue down the shell B and through the stove-pipe. When the stove is not in use, the lower ends of the shells can be closed by a suitable plug.

Having thus described my invention, what I claim, and desire to secure by Letters Patent, is—

1. A chimney-support comprising an approximately centrally-apertured base or platform and two concentric shells depending from the lower side of the said base or platform, the inner shell being in line with the said opening in the base and adapted to receive a stove-pipe which is slipped on the same from its lower end, substantially as described.

2. A chimney-support comprising an approximately centrally-apertured base or platform having two concentric shells of substantially the same length depending from its lower side, the inner shell being in line with the openings in the said base and the outer shell having an outer flange at its lower or free end, substantially as and for the purpose described.

In testimony whereof I affix my signature in presence of two witnesses.

JAMES K. DEVORE.

Witnesses:

DANIEL MAISH,  
JAMES HANNA.