

(No Model.)

O. W. ALLISON.

CIGARETTE DRAWING BAND FOR CIGARETTE MACHINES.

No. 459,116.

Patented Sept. 8, 1891.

Fig. 1.

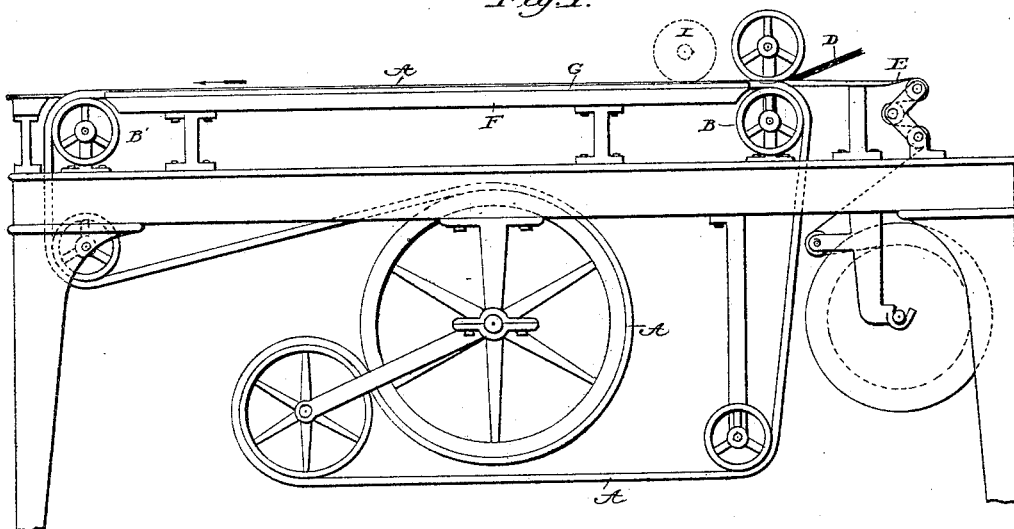


Fig. 2.

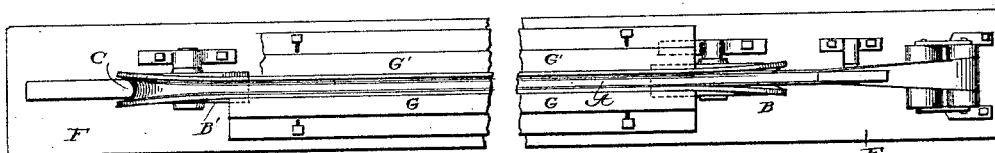


Fig. 3.



Fig. 4.

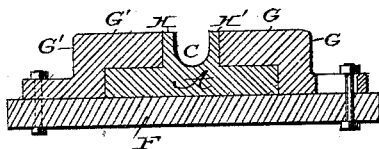


Fig. 5.

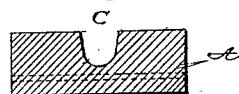
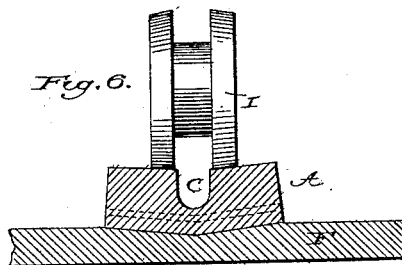


Fig. 6.



Witnesses

M. M. Mortimer.

A. R. Kennedy.

Inventor

Oscar W. Allison.

By his Attorney

Geo. B. Selden.

UNITED STATES PATENT OFFICE.

OSCAR W. ALLISON, OF ROCHESTER, NEW YORK.

CIGARETTE-DRAWING BAND FOR CIGARETTE-MACHINES.

SPECIFICATION forming part of Letters Patent No. 459,116, dated September 8, 1891.

Application filed June 19, 1889. Renewed July 17, 1891. Serial No. 399,802. (No model.)

To all whom it may concern:

Be it known that I, OSCAR W. ALLISON, a citizen of the United States, residing at Rochester, in the county of Monroe and State of New York, have invented an Improved Cigarette-Drawing Band for Cigarette-Machines, of which the following is a specification, reference being had to the accompanying drawings.

- 10 My present invention relates to an improved cigarette-drawing band for cigarette-machines, which improvements are fully described and illustrated in the following specification and accompanying drawings, the
15 novel features thereof being specified in the claims annexed to the said specification.

In the accompanying drawings, representing my present improvements, Figure 1 is a side elevation. Fig. 2 is a plan view. Fig. 3
20 is a transverse section of the endless flexible band, showing the groove therein at its normal width. Fig. 4 represents the same with the groove contracted. Figs. 5 and 6 represent a modified construction.

- 25 In the accompanying drawings, A represents the endless flexible cigarette-drawing band which runs over suitable carrying-pulleys B B' and is operated by suitable driving and corner pulleys. It is made of any suitable flexible material, being provided on its
30 exterior with a continuous longitudinal groove C of a width which, at the outer surface of the band, is normally greater than the diameter of the cigarettes to be made by the machine.
35 The groove receives the tobacco rod or filler D and the paper E at one end of its horizontal course and delivers it at the other. The band travels over a suitable table or support F.

In order to contract or narrow the groove in the band, so as to cause it to grasp the cigarette with sufficient force to draw it along, I
40 employ any suitable device adapted to close up the groove by compressing the band or a portion of it. Such device may consist of the

lateral guides G G', Figs. 2 and 4, placed on each side of the band, or of the projecting ribs H H', Figs. 3 and 4, between which the groove is formed. The ends of the guides are curved or inclined outward where the band enters between them. The guides are attached to the table, so that they may be adjusted laterally.

A series of rollers on each side of the band may be employed instead of the guides, and in another modification (represented in Figs. 55
5 and 6) the groove is contracted by pressing the band down into a longitudinal recess in the table by means of the pressure-roller I, which is supported above the table in any suitable manner. A series of these pressure-rollers may be employed. Any other suitable device adapted to contract the groove may, however, be used.

What I claim is—

1. The combination, in a cigarette-machine, 65 of the endless flexible traveling cigarette-drawing band provided on its outer surface with a continuous longitudinal groove formed between side walls, one or both of which are flaring and adapted to be bent inward to contract the groove transversely, and a suitable device constructed and arranged to contract the groove, whereby the band is caused to grasp the cigarette to draw it onward, substantially as described. 75

2. The combination, in a cigarette-machine, of the endless flexible traveling cigarette-drawing band provided on its outer surface with a continuous longitudinal groove formed between side walls, one or both of which are flaring and adapted to be bent inward to contract the groove transversely, and suitable guides, as G G', whereby the groove is contracted, substantially as described. 80

OSCAR W. ALLISON.

Witnesses:

GEO. B. SELDEN,
W. R. KENNEDY.