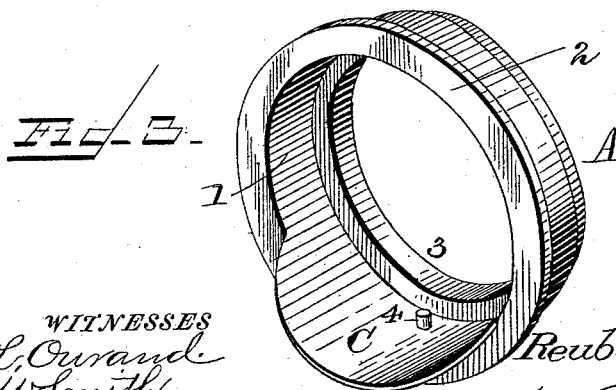
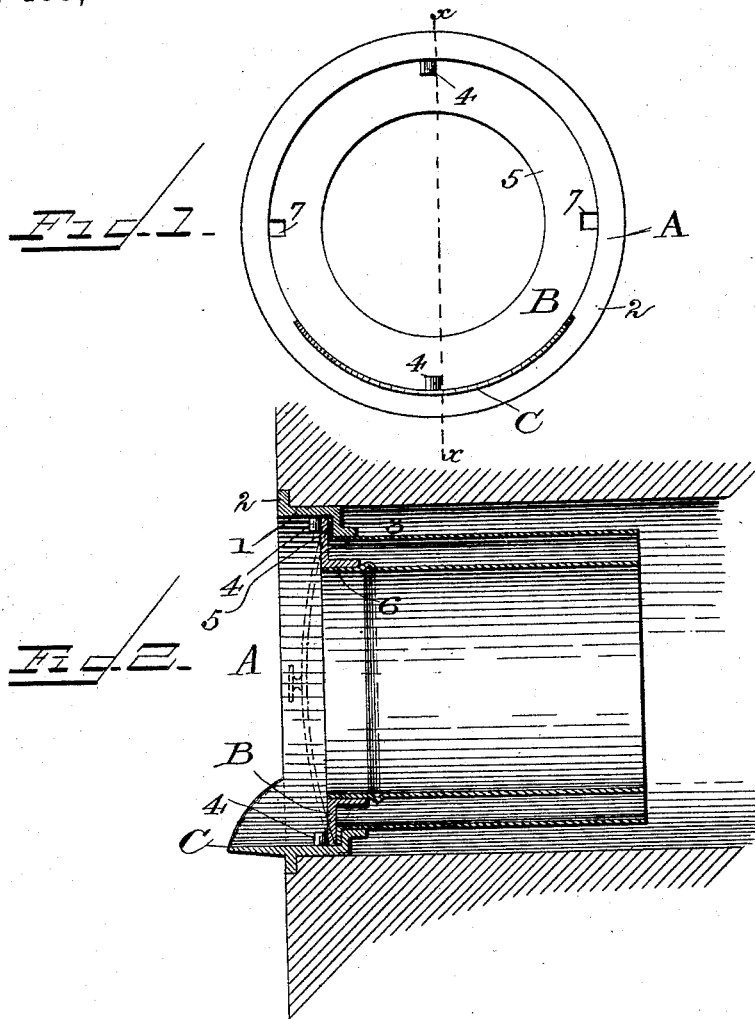


(No Model.)

R. Z. CASSEL.
PIPE THIMBLE.

No. 489,068.

Patented Jan. 3, 1893.



WITNESSES
J. L. Orrand.
C. W. Smith

INVENTOR.
Reuben Z. Cassel.
per Finckel & Finckel,
Attorneys

UNITED STATES PATENT OFFICE.

REUBEN Z. CASSEL, OF COLUMBUS, OHIO.

PIPE-THIMBLE.

SPECIFICATION forming part of Letters Patent No. 489,068, dated January 3, 1893.

Application filed August 29, 1892. Serial No. 444,467. (No model.)

To all whom it may concern:

Be it known that I, REUBEN Z. CASSEL, a citizen of the United States, residing at Columbus, in the county of Franklin and State of Ohio, have invented certain new and useful Improvements in Pipe-Thimbles; and I do hereby declare the following to be a full, clear, and exact description of the invention, such as will enable others skilled in the art to which it appertains to make and use the same.

The object of my invention is to provide a neat, simple, and inexpensive thimble which is adapted to receive different sizes of pipe.

My invention consists in an improved form of main ring or thimble and the way of connecting the "reducing" thimble.

In the accompanying drawings, Figure 1 is a front view; Fig. 2 is a sectional view taken on the line $x-x$ of Fig. 1; and Fig. 3 is a perspective view of the main thimble or ring.

A represents the outer or larger thimble which will preferably be made of cast iron. This thimble will comprise a tubular portion 1, the outwardly extending flange 2, and an inwardly extending flange 3. Upon the inner side of the tubular part are pins 4.

The letter B designates a reducing thimble or ring which fits within the tubular portion of the outer thimble and as its name suggests enables the user to diminish the size of the pipe opening in the wall. This thimble or ring B comprises a flat portion 5 with a flange 6 projecting rearwardly from the edge of its opening. In the edge of the flat portion are notches 7 which allow the thimble to pass the pins 4 which when the thimble is slightly turned hold the latter in place. The size of the opening in the reducing thimble may, of course, be such as circumstances require. A short piece of sheet metal iron pipe is secured to the cast iron thimble A by turning its edge down upon the flange 3, as shown in Fig. 2. A lip C which projects from the lower side of the mouth of the outer thimble may

also be provided to prevent streaking and other disfigurement of the wall by the falling of soot, ashes, &c., when a pipe is withdrawn from the thimble. A plate for closing the pipe opening will have notches in its edge so as to be capable of insertion and fixation in the outer thimble in a manner like that in which the reducing thimble is applied and secured.

By constructing the outer thimble as herein described, that is, with the cylindrical portion 1 and pins 4 so that the closing plate may be set back beyond the plane of the surface of the wall the stove pipe opening may be papered over and its presence, so far as appearances indicate, obliterated.

Among other important advantages of my thimble are that it is neat in appearance, extremely simple, cheaply constructed, substantial, and durable in use.

The various sizes of reducing thimbles may be kept in stock by dealers so that it will be necessary to purchase only that size which is needed.

What I claim and desire to secure by Letters Patent is—

In combination, the main thimble A comprising the cylindrical portion 1, the outwardly turned flange 2 at its outer end, and the inwardly turned flange 3 at its inner end adapted to receive a stove pipe, the pins 4 on the interior of the cylindrical portion 1, and the reducing thimble B having the disk or plate-ring 5 constructed to fit within the cylindrical portion 1 and provided with notches 7 to receive pins 4 whereby the reducing thimble may be detachably secured to the main thimble, substantially as shown and described.

In testimony whereof I affix my signature in presence of two witnesses.

REUBEN Z. CASSEL.

Witnesses:

GEO. M. FINCKEL,
P. L. WASHINGTON.