

(No Model.)

N. F. CARPENTER.  
HORSE OR CARRIAGE BLOCK.

No. 489,669.

Patented Jan. 10, 1893.

Fig. 1.

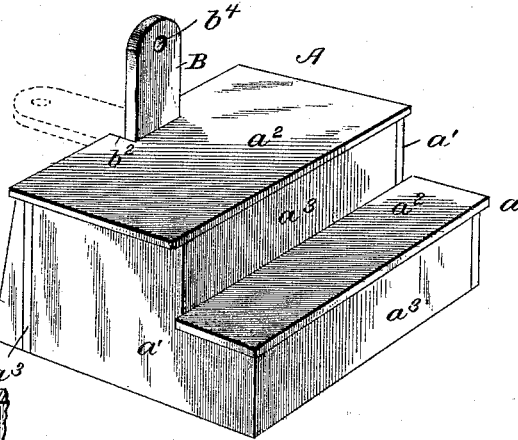


Fig. 4.

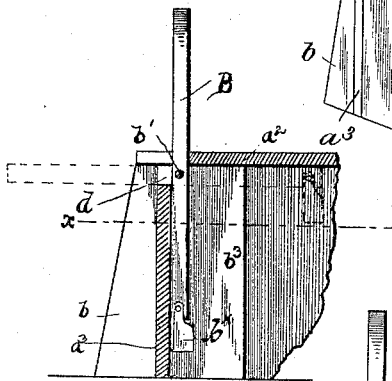


Fig. 2.

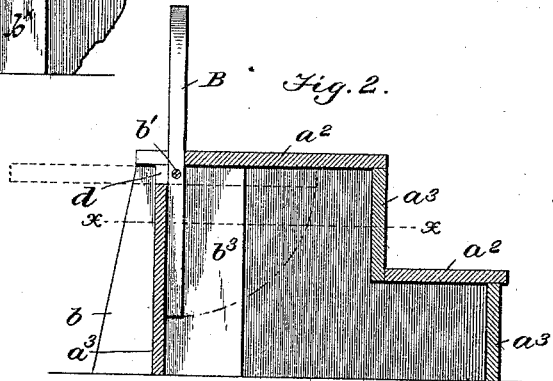
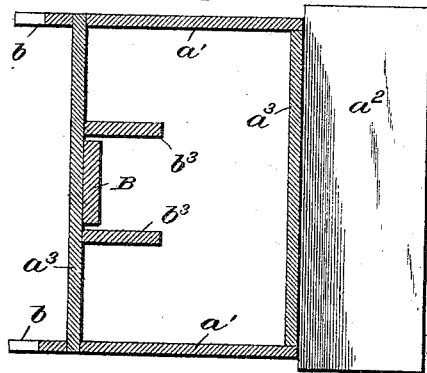


Fig. 3.



Witnesses.

*J. W. Wister*  
*George Hughes*

Inventor

*Newton F. Carpenter*

By *James Lott*

*Attys.*

# UNITED STATES PATENT OFFICE.

NEWTON F. CARPENTER, OF MENOMONEE, WISCONSIN.

## HORSE OR CARRIAGE BLOCK.

SPECIFICATION forming part of Letters Patent No. 489,669, dated January 10, 1893.

Application filed December 14, 1891. Serial No. 415,025. (No model.)

### *To all whom it may concern:*

Be it known that I, NEWTON F. CARPENTER, a citizen of the United States, residing at Menomonee, in the county of Dunn and State of Wisconsin, have invented certain new and useful Improvements in Horse or Carriage Blocks; and I do hereby declare the following to be a full, clear, and exact description of the invention, such as will enable others skilled in the art to which it appertains to make and use the same, reference being had to the accompanying drawings, and to letters of reference marked thereon, which form a part of this specification.

15 This invention relates to certain new and useful improvements in horse or carriage blocks and has for its object the production of a new and improved device of this kind which also comprises a hitching post for  
20 horses.

The invention consists in a horse or carriage block having a pivotally mounted arm or bar which when in a vertical position serves as a hitching post for horses and, when extended horizontally, as an additional step or support for a person in mounting a horse or entering a vehicle.

25 The invention also comprises the detail construction, combination and arrangement of parts, substantially as hereinafter fully set forth and particularly pointed out in the claims.

In the accompanying drawings:—Figure 1 is a view in perspective of my improved block showing the arm or bar extended in dotted lines. Fig. 2 is a vertical sectional view the weight, in practice, applied to the arm or post, being omitted. Fig. 3 is a horizontal sectional view on the line  $x-x$ , Fig. 2. Fig. 4 is a detailed view showing the arm or post with its attached weight.

Referring to the drawings, A designates a block or platform having a lower step  $a$ . This block is composed of corresponding end-boards  $a'$ , top boards  $a^2$ , and connecting boards  $a^3$ , after the forms in general use. To the outer connecting-board  $a^3$ , at the ends thereof, are secured corresponding fender bars  $b$ , which taper inwardly toward their upper ends. These bars  $b$  serve to prevent vehicle wheels from coming in contact with, or

striking against, the front of the block or platform.

B is an arm or post, weighted at its inner end, as at  $b^x$  and pivotally mounted by a cross-rod  $b'$  passed therethrough and supported by the end-boards  $a'$ . This arm or post is projected through a U-shaped slot or opening  $b^2$  in the top of the stand or platform, and normally occupies a vertical position. Two parallel bars  $b^3$  secured to the inner side of the front board  $a^3$  serves as guides for arm or post B. In the upper end of the latter is a hole or opening  $b^4$  through which a rein or strap of a horse's harness is designed to be passed when it is designed to hitch a horse thereto. By bearing on the outer end of arm or post B the latter will be lowered into a horizontal position, and will rest in a groove  $d$  formed in the upper edge of board  $a^3$ , and its inner portion will bear against the underside of the top of the block. Thus the arm or post serves as a step for a person in mounting a horse or entering a vehicle, and by reason of extending beyond the block or platform is of great assistance in this respect, especially when the horse or vehicle is not close up against the block. Immediately upon the removal of the weight or pressure from the arm or post, the latter will assume its normal vertical position, and is then out of the way and not liable to be struck by any approaching team.

My improvement adds but little to the cost of the block or platform, yet it greatly enhances the usefulness thereof.

I claim as my invention:—

1. A block or platform having a hitching arm or post pivotally supported in a vertical position, to adapt it to serve as a hitching post or as an extended step, as set forth.

2. A block or platform having an arm or post pivotally connected thereto and normally occupying a vertical position and capable of serving as an extended step, when in its horizontal position as set forth.

3. A block or platform having a slot or opening therein, and a pivoted arm or post projected through said slot or opening and having an inner weighted end, substantially as set forth.

4. The herein-described block or platform

having a slot or opening and parallel guide  
bars, and the arm or post located between  
said guide bars and having a weighted end  
and a hole or opening in its other end, and a  
5 pivotal rod extended through said arm or post  
and supported by said stand, substantially as  
set forth.

In testimony whereof I affix my signature in  
presence of two witnesses.

NEWTON F. CARPENTER.

Witnesses:

R. D. WHITFORD,  
CARROLL LUCAS.