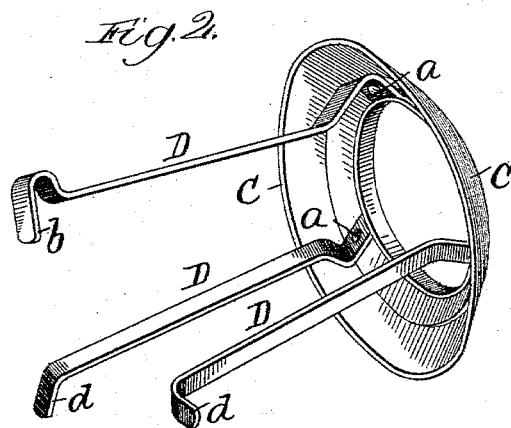
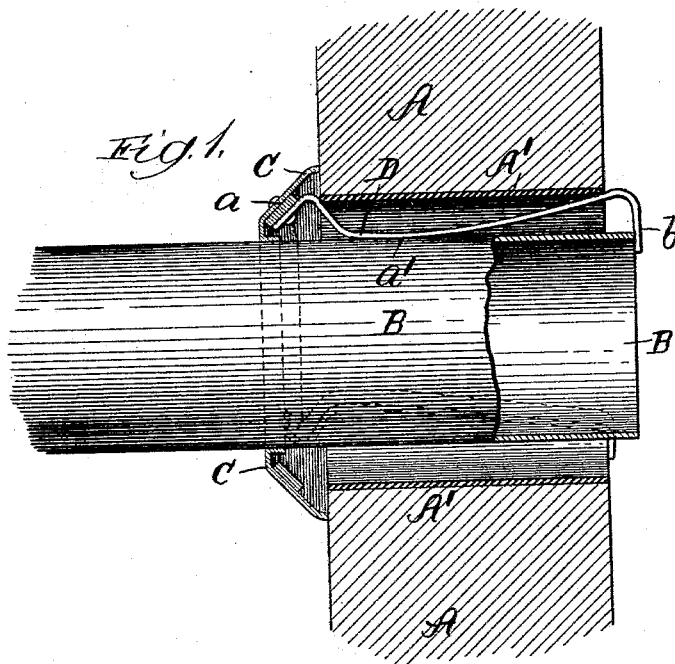


(No Model.)

I. C. N. SWEET.
COMBINED STOVEPIPE AND COLLAR HOLDER.

No. 490,233.

Patented Jan. 17, 1893.



Witnesses:
Chas. E. Gaylord.
L. M. Freeman.

Inventor:
Jas C. N. Sweet
By L. B. Coupland & Co
Attys.

UNITED STATES PATENT OFFICE.

IRA C. N. SWEET, OF SANDWICH, ILLINOIS, ASSIGNOR TO CLARENCE C. GREGORY, OF SAME PLACE.

COMBINED STOVEPIPE AND COLLAR HOLDER.

SPECIFICATION forming part of Letters Patent No. 490,233, dated January 17, 1893.

Application filed September 15, 1892. Serial No. 445,949. (No model.)

To all whom it may concern:

Be it known that I, IRA C. N. SWEET, a citizen of the United States, residing at Sandwich, in the county of De Kalb and State of Illinois, have invented certain new and useful Improvements in a Combined Stovepipe and Collar Holder, of which the following is a full, clear, and exact description, that will enable others to make and use the same, reference being had to the accompanying drawings, forming a part of this specification.

This invention relates to an improved arrangement for securing and retaining the terminal end of a stove-pipe and collar with reference to the opening in the wall communicating with the chimney or flue-passage.

Figure 1 is a broken-away part elevation and part section of an arrangement embodying my improved features; and Fig. 2, a view in perspective of the device proper.

Referring to the drawings, A may represent the wall through which the pipe passes to reach the smoke-flue, A' the usual sleeve, B the stove-pipe, and C the collar. A number of spring-holding arms, D, are secured, at their outer ends, to the collar C, as at *a*. From the point of attachment to the collar, the arms are slightly bent or bowed inwardly so that the part *a'* will have a bearing on the pipe and prevent the same from working back out of the wall. The inner detached or free end of one of the arms is bent or turned inwardly to form the hook end *b*, with which the terminal end of the pipe comes in contact (Fig. 1) when inserted and prevents the same from entering too far and interfering with the draft. The other arms have the detached ends *d* turned outwardly over the inner end of the thimble and the adjacent surface of the wall and securely holds the collar in place. The arms are disposed at intervals so that

they bear equally on the pipe from all sides alike. By this arrangement the pipe and collar are securely held in place by means of the arms inserted between the pipe and sleeve, and the different parts may be easily and quickly taken down or put up without the use of any nails, screws or threaded connections.

Having thus described my invention, what I claim as new, and desire to secure by Letters Patent is:—

1. As an improved article of manufacture, a stove-pipe collar, provided with a number of spring-arms secured at their respective outer ends thereto and extending inwardly therefrom, said arms being bent near their longitudinal center to bear against the exterior surface of the pipe, the terminal free ends of one or more of said arms being bent to engage with the interior surface of the wall, and one or more of the free ends bent in the opposite direction to engage with the end of the pipe and form an entering stop therefor, substantially as set forth.

2. The combination with a stove-pipe, of a collar, provided with a number of spring-holding arms, the outer ends of which are secured to said collar, the opposite or free end of some of these arms being bent outwardly to engage with the inner surface of the wall so as to hold the collar in place, and the ends of the other arm or arms bent in the opposite direction to form a stop for the entering end of the pipe, said arms bearing against the surface of the pipe at a point between their respective ends to prevent the same from backing out, substantially as and for the purpose set forth.

IRA C. N. SWEET.

Witnesses:

CHAS. E. ORR,
WM. DEACON.