

(No Model.)

W. GERHARDT.
VISE.

No. 490,432.

Patented Jan. 24, 1893.

Fig. 1.

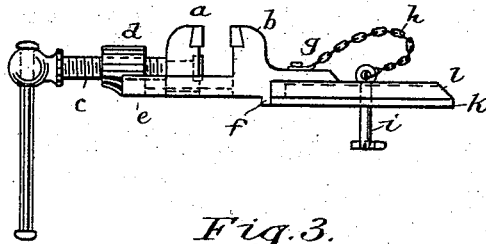


Fig. 2.

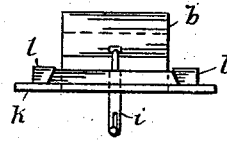


Fig. 3.

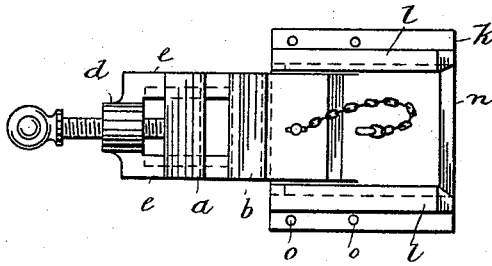


Fig. 6.

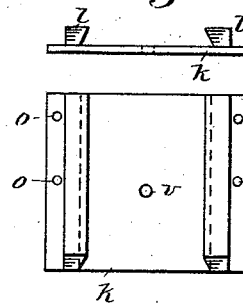


Fig. 7.

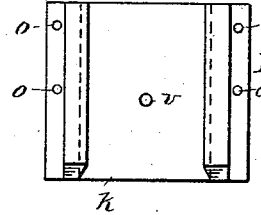


Fig. 4.

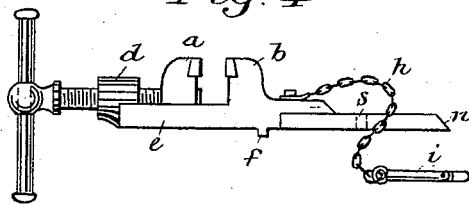


Fig. 8.



Fig. 9.

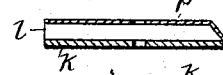


Fig. 5.

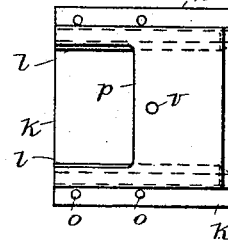
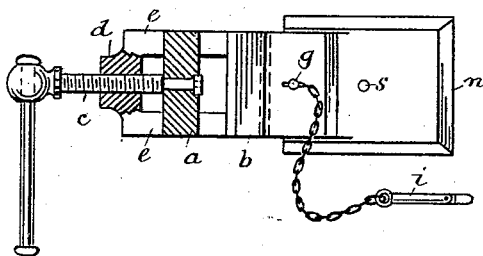


Fig. 10.

Witnesses
E. B. Bolton
H. Palmer

By

Inventor:
Wilhelm Gerhardt
Reinhardt & Co.
his Attorneys

UNITED STATES PATENT OFFICE.

WILHELM GERHARDT, OF BERLIN, GERMANY.

WISE.

SPECIFICATION forming part of Letters Patent No. 490,432, dated January 24, 1893.

Application filed April 8, 1892. Serial No. 428,351. (No model.)

To all whom it may concern:

Be it known that I, WILHELM GERHARDT, a subject of the Emperor of Germany, residing at Berlin, Germany, have invented a Portable

5 Vise, of which the following is a specification.

This invention relates to devices for securing a vise to a bench or other fixed part, whereby the vise will be rigidly held while in use and when desired can be readily detached

10 and removed.

In the accompanying drawings forming part of this specification, Figure 1 is a side view of a vise with my improvement. Fig. 2 is a

15 rear view of the same. Fig. 3 is a plan view.

Figs. 4 and 5 are a side and top view showing the vise detached. Fig. 6 and 7 are an edge and plan view respectively of the independent base, and Figs. 8, 9 and 10 are transverse

20 sectional, longitudinal sectional, and a plan view of said base provided with a top protecting plate.

The independent base consists of a plate K having perforations *o o* for the passage of bolts by which it may be attached to a bench,

25 table, &c. Two parallel longitudinal ribs *l, l*, are formed on the upper side of said plate and are undercut to conjointly form a dove-tailed recess.

The vise proper is provided with an integral rearwardly horizontal extension *n*, the side edges of which are beveled so that it can be snugly and easily slid to occupy a position between, and be retained by the guide ribs *l, l*.

30 When the extension *n* reaches its proper position between the ribs *l, l*, further movement will be arrested by reason of a depending shoulder *f* on the lower side of the vise contacting with the front edge of the plate K.

The vise is securely locked to the independent base by means of a bolt *i* connected by a chain *h* and pin *g* to the vise. The bolt *i* passes through the extension, the plate K and through the bench or table, the extremity depending below the table and secured by having a pivotal portion turned at

45 right angles thereto. To properly protect the

independent base from dust &c; I provide it with a top plate P which is of the form shown in Fig. 10 and rests upon the ribs *l, l*. The top plate is also perforated for the passage of the bolt *i*. 50

The vise may be of any well known or desirable character. Thus in Figs. 1, 3, 4, and 5, *a* is the movable and *b* the fixed jaw; *c* the threaded spindle operating the movable jaw and playing through the bearing *d*, *c* is the base of the vise. 55

The usefulness of the improvements herein described will be appreciated.

When not employed the vise can be quickly detached from the base and placed in some convenient and unobjectionable place. 60

I claim

1. The combination with an independent base having parallel guides and perforated as described, of a vise having a horizontal extension sliding between said guides and secured in engagement by a bolt passing through the extension and the base, substantially as set forth. 65

2. The combination with an independent base having parallel undercut guides, of a vise provided with a lower stop shoulder *f* and horizontal extension having beveled edges, together with a bolt passing through said extension and base to lock the extension against sliding movement between the guide ribs, substantially as set forth. 70

3. The combination with an independent base provided with guide ribs, a vise having an extension sliding between said ribs and a top plate P, together with a bolt detachably passing through the plate, extension, and base to rigidly lock said parts, substantially as set forth. 75

In witness whereof I have hereunto set my hand in presence of two witnesses. 80

WILHELM GERHARDT.

Witnesses:

W. HAUPT,

W. H. EDWARDS.