

(No Model.)

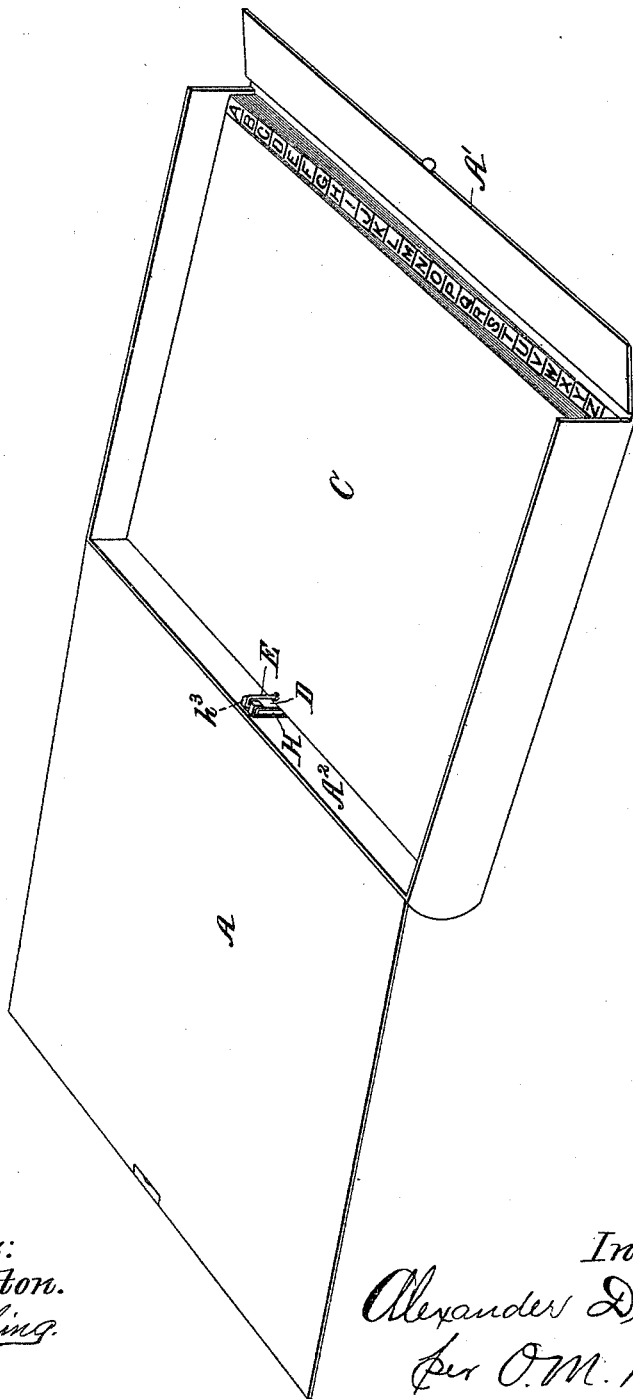
2 Sheets—Sheet 1.

A. DOM.  
TEMPORARY BINDER FOR FILE CASES.

No. 491,473.

Patented Feb. 7, 1893.

FIG. 1.



Witnesses:  
W. C. Jirdinston.  
Harry F. Noking.

Inventor:  
Alexander Dow  
per O. M. Hill  
Attorney.

A. DOM.  
TEMPORARY BINDER FOR FILE CASES.

No. 491,473.

Patented Feb. 7, 1893.

FIG. 2.

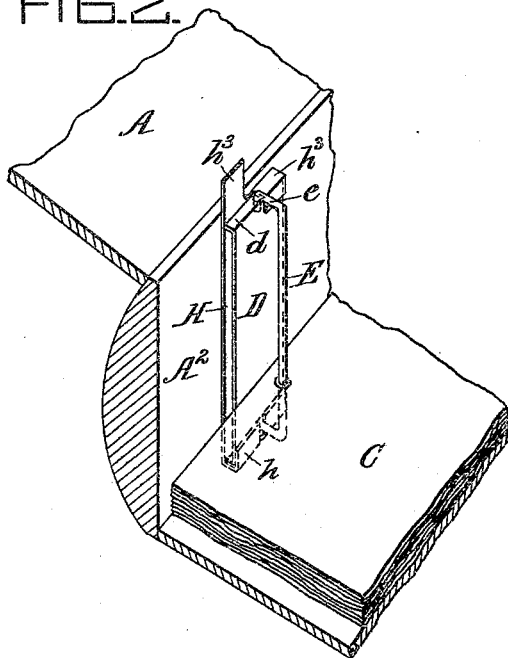


FIG. 3.

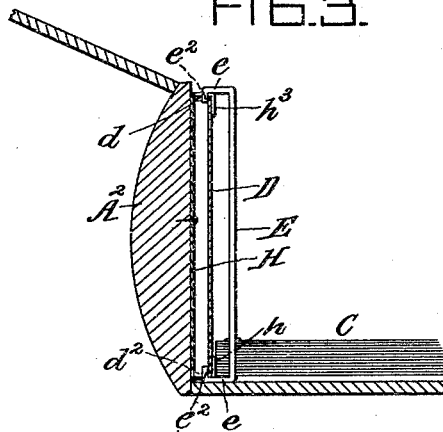


FIG. 4.

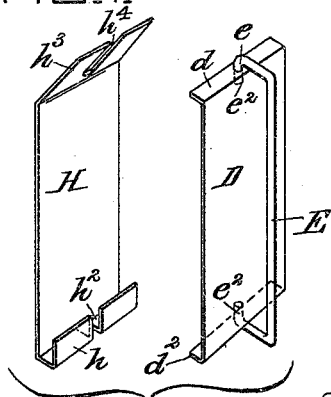


FIG. 5.

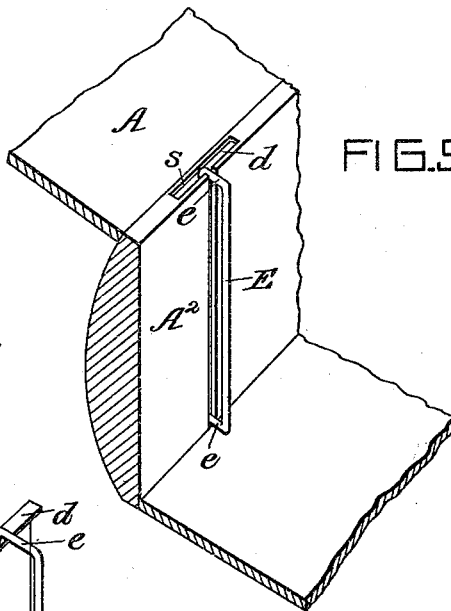
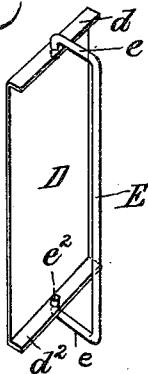


FIG. 6.



Witnesses:  
W. C. Jirdiniston.  
Harry T. Hoking.

Inventor:  
Alexander Dow  
per O. M. Hill  
Attorney.

# UNITED STATES PATENT OFFICE.

ALEXANDER DOM, OF MOUNT HEALTHY, ASSIGNOR TO THE GLOBE  
COMPANY, OF CINCINNATI, OHIO.

## TEMPORARY BINDER FOR FILE-CASES.

SPECIFICATION forming part of Letters Patent No. 491,473, dated February 7, 1893.

Application filed November 30, 1892. Serial No. 453,598. (No model.)

*To all whom it may concern:*

Be it known that I, ALEXANDER DOM, a citizen of the United States, residing at Mount Healthy, in the county of Hamilton and State of Ohio, have invented certain new and useful Improvements in Temporary Binders for File-Cases, of which the following is a specification, reference being had to the accompanying drawings.

The primary object of my invention is to provide a simple and effective binder for connecting a suitable index within a file-case, the said binder to be capable of ready manipulation and connection, and cheap of manufacture.

In the accompanying drawings:—Figure 1, is a perspective view of a file-case with my improved binder in position therein. Fig. 2, is a section through the back, and a portion of the lid and bottom of a file-case with my improved binder therein, showing one of the locking flanges in an elevated position. Fig. 3, is a vertical central section taken through the binder and back of the file-case, said binder being shown in an operative position. Fig. 4, is a perspective view of the two portions which preferably go to make up my improved binder, said portions being detached from each other and from the file-case. Fig. 5, is a view of a modification of my invention. Fig. 6, is a view of the index plate shown in Fig. 4, with the end flanges turned outward, said plate being operative with the flanges turned in either direction.

The file-case is preferably of a rectangular configuration, as shown, with a hinged cover A and hinged end portion A' adapted to meet and lock with said cover; but, said case forms no feature of my invention, except in connection with the binder, and may be otherwise constructed, if desired.

Within the file-case is a detachable index, consisting of leaves or partitions C, the latter being capable of expansion from each other to receive the letters, bills or other documents designed to be filed and arranged in alphabetical order; and, my invention consists of the device hereinafter set forth for detachably connecting said index to the file-case.

My improved binder preferably consists of a plate D having the top and bottom inturned flanges  $d$  and  $d^2$ , and a rod E having the end

angular portions  $e$  and  $e^2$ , the latter engaging within openings in said flanges, as shown, and a suitable device for connecting said plate and rod to the back A<sup>2</sup> of the case.

The preferred device for detachably connecting the plate D to the file-case consists of a plate H having an inwardly upturned flange  $h$  at the bottom thereof, with a central recess  $h^2$  therein, as more clearly shown in Fig. 4, and a top flange  $h^3$  with a central recess  $h^4$  therein, said plate being attached to the back or other desired portion of the file-case, on its inner face.

The plate D and its index rod E are attached to the plate H, by inserting the flange  $d^2$ , of plate D, within the channel formed by the upturned flange  $h$ , the lower angular portion  $e$  of the rod resting within the lower recess  $h^2$ , after which the top flange  $d$  is brought up beneath the flange  $h^3$  at which time the latter is bent down over the top of said flange  $d$  and down over the top outer face of plate D, as shown, thus securely locking said plates together at top and bottom. It will be seen that the top angular portion  $e$  of rod E engages within the recess  $h^4$  of the top flange  $h^3$  when the latter is bent down and locked to place, as aforesaid. The rear portions of the index leaves, C, are each provided centrally with an opening which encircles the rod E, and in this manner said leaves are attached adjustably to said rod before the latter is secured to its plate, D.

In Fig. 5, I have shown a modification of the means for attaching the plate D and its index rod to the filing case, which consists in forming a vertical T-shaped recess  $s$  in the back A<sup>2</sup>, into which the plate D and its flanges  $d$  and  $d^2$ , may be inserted, and in this manner a detachable connection is effected between the index and the filing-case. When used in this latter connection shown in Fig. 5, it is necessary that the plate D and its flanges be lifted entirely out of the T-shaped recess before the index can be detached from the case; and, on this account, I prefer the plate H, with its interlocking flanges  $h$  and  $h^3$ , as the plate D may be readily detached by simply bending up the flanges  $h^3$ , at which time said plate is free to be disengaged.

The plates D and H, and their flanges, are formed of any suitable pliable sheet-metal.

The operation of my improved binder is quite simple, and has been partially set forth. The index leaves C, are first strung on the wire or rod E, after which it is attached to the flanged plate D, as aforestated; the plate D is then inserted with its lower flange  $d^2$  at the rear of flange  $h$ , after which the top flange  $h^3$  is bent down over the top face of the index plate, when the connection is effectually secured. The index leaves or partitions will readily slide up or down on their rod E, thus facilitating in the examination of the filed contents, and also permits of said leaves accommodating themselves to the quantity of the contents filed between any designated partitions of the index.

I am aware that it is not new, broadly, to detachably connect an index within a file-case; but,

What I claim as new, and desire to secure by Letters Patent is:

1. The file-case having the plate H rigidly attached to its inner face, said plate having flanges  $h$  and  $h^3$ , which latter are adapted to detachably connect the index binder to said case, substantially as set forth.

2. The binder consisting of plate D having

end flanges  $d$  and  $d^2$  with openings therein, in combination with rod E having the angular bent portions  $e^2$  sprung within the openings in said flanges, and suitable means for detachably connecting said plate to a file-case, substantially as set forth.

3. A binder for a file-case, consisting of plate D having end flanges and rod E attached thereto, in combination with plate H having end flanges  $h$  and  $h^3$ , said flanges being adapted to engage and overlap the end portions of plate D, substantially as set forth.

4. The plate H attached to the inner face of a file-case, said plate having a lower upturned flange  $h$  with a recess  $h^3$  therein and a top flange  $h^3$  with a recess  $h^4$  therein, in combination with plate D having end flanges  $d$  and  $d^2$  with a bent rod E attached thereto, and an index attached to said rod, the said flanges  $h$  and  $h^3$  being adapted to engage with and lock the index plate D, substantially as specified.

ALEXANDER DOM.

Witnesses:

ALEX. DOM, Jr.,

O. M. HILL.