

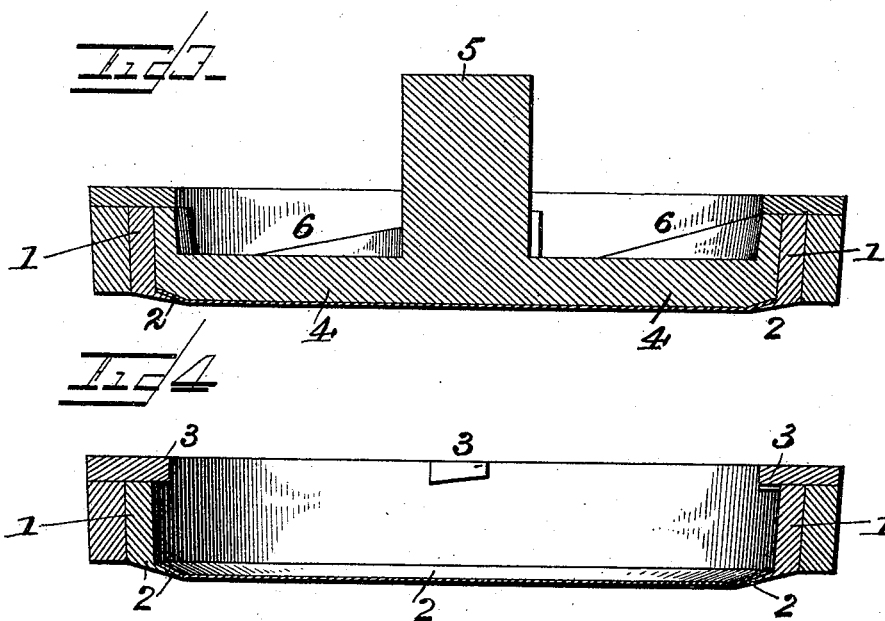
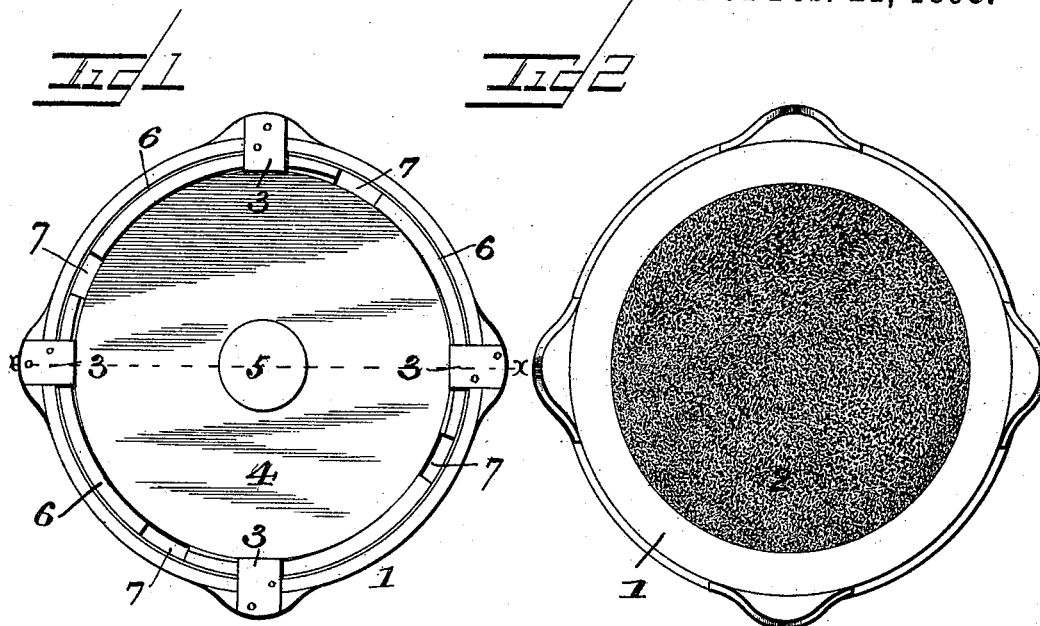
(No Model.)

C. A. WEED.

REVOLVING HEAD FOR SANDPAPERING MACHINES.

No. 492,077.

Patented Feb. 21, 1893.



WITNESSES:
F. L. Ourand.
J. L. Coombs.

INVENTOR:
Clinton A. Weed,
By Lewis Duggan & Co.
Attorneys.

UNITED STATES PATENT OFFICE.

CLINTON A. WEED, OF RACINE, WISCONSIN.

REVOLVING HEAD FOR SANDPAPERING-MACHINES.

SPECIFICATION forming part of Letters Patent No. 492,077, dated February 21, 1893.

Application filed May 13, 1892. Serial No. 432,893. (No model.)

To all whom it may concern:

Be it known that I, CLINTON A. WEED, a citizen of the United States, and a resident of Racine, in the county of Racine and State of Wisconsin, have invented certain new and useful Improvements in Revolving Heads for Sandpapering-Machines; and I do hereby declare that the following is a full, clear, and exact description of the invention, which will enable others skilled in the art to which it appertains to make and use the same, reference being had to the accompanying drawings, which form a part of this specification.

My invention relates to improvements in the revolving heads for sand papering machines, which are employed in wood working factories for smoothing and polishing plain wooden surfaces.

The object of the invention is to provide an improved construction of head for holding sand-paper by which the paper can be quickly inserted and removed and in which several superimposed layers may be used which can be successively removed when worn out without removing the head, thus effecting a great saving in time and labor.

The invention consists in the novel construction and combination of parts herein-after described and claimed.

In the accompanying drawings: Figure 1 is a plan or top view of the head; Fig. 2 is a view looking from the opposite side; Fig. 3 is a section on the line x, x Fig. 1; Fig. 4 is a similar view of the ring or rim, the clamping disk being removed.

In the said drawings the reference numeral 1 denotes a metallic or other ring or rim, provided with an inwardly projecting beveled flange 2. At the opposite side or edge the ring is formed or provided with a series of inwardly projecting beveled lugs 3.

The numeral 4 denotes a clamping disk made of any suitable material and provided

with a shaft or pin 5 by which it may be rotated. The outer face of this disk at or near the periphery is formed or provided with flanges 6, and slots or recesses 7 corresponding in number with the lugs 3. The inner face of this disk at its edge is slightly beveled to correspond with the bevel of flange 2 of the ring.

The operation is as follows: The sand-paper in the form of circular disks is placed in the ring 1, the edges resting on the flange 2. The ring is then applied to the clamping disk, the lugs 3 passing through the slots or recesses 7. By now turning said ring so that the said lugs will ride upon the inclined flanges 6, and the sand paper securely held between the disk and the beveled flange of the ring. One or more disks or pieces of sand paper may be employed and when more than one is used, the outer piece when worn may be readily removed by simply loosening the ring, withdrawing the worn out piece and tightening the ring again, without the necessity of removing the ring from the clamp or disconnecting the device from the machine. A cushion may also be placed between the sand paper and clamping disk if desired.

Having thus described my invention, what I claim is--

In a paper holding head for sand papering machines the combination with the ring having an inwardly projecting flange and a series of inwardly projecting beveled lugs, of the clamping disk having a series of beveled flanges and peripheral slots or recesses, substantially as described.

In testimony that I claim the foregoing as my own I have hereunto affixed my signature in presence of two witnesses.

CLINTON A. WEED.

Witnesses:

HENRY J. BUDD,
CHAS. H. COLLINS.