

(No Model.)

2 Sheets—Sheet 1.

V. C. BALTZELL.

APPLIANCE FOR HANGING AND ADJUSTING WINDOW CURTAINS.

No. 492,755.

Patented Feb. 28, 1893.

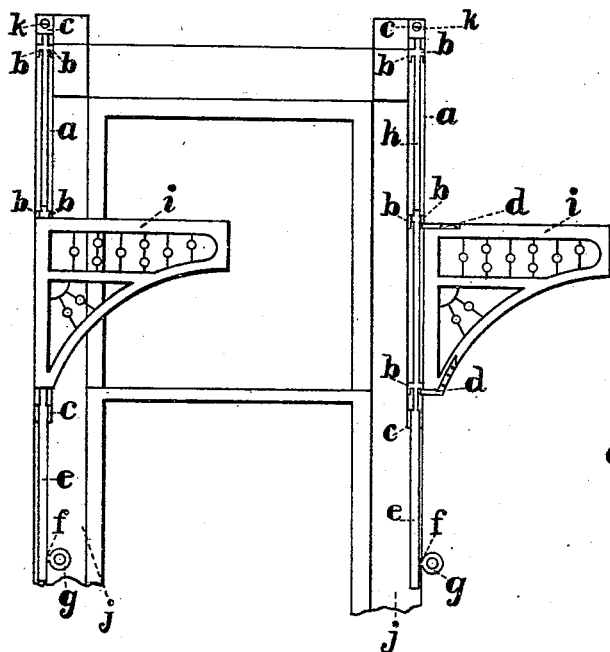


Fig. 2.

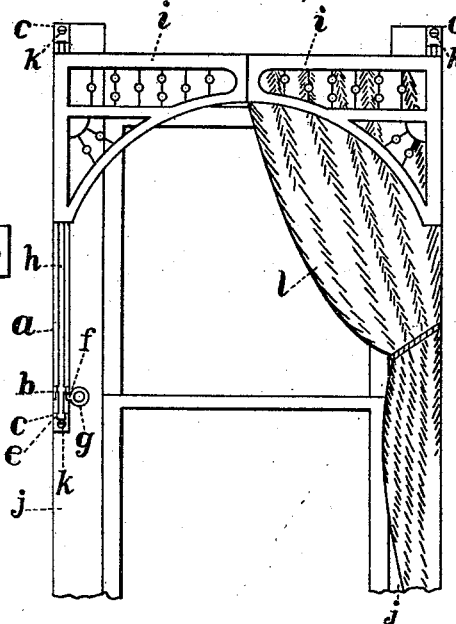


Fig. 1.

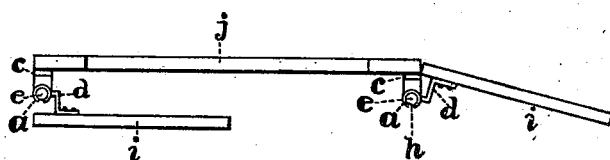


Fig. 3.

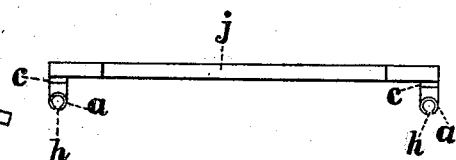


Fig. 4.

WITNESSES:
J. E. Wakeley
C. S. Sheldon.

Virginia C. Baltzell INVENTOR

BY

C. J. Wakeley ATTORNEY.

(No Model.)

2 Sheets—Sheet 2.

V. C. BALTZELL.

APPLIANCE FOR HANGING AND ADJUSTING WINDOW CURTAINS.

No. 492,755.

Patented Feb. 28, 1893.

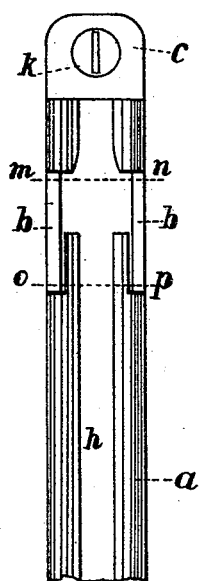


Fig. 5.

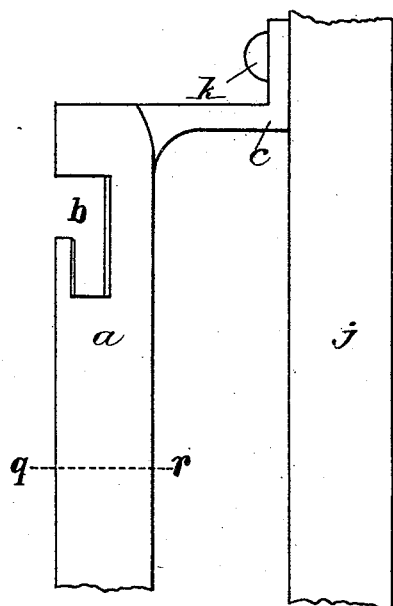


Fig. 9.

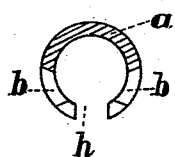


Fig. 6.



Fig. 8.

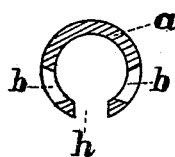


Fig. 7.

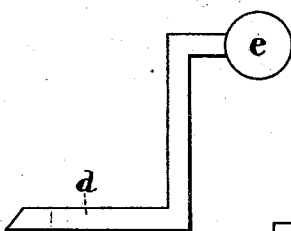


Fig. 10.

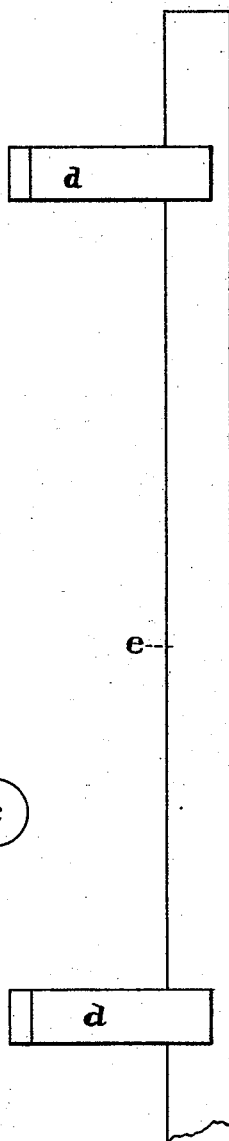


Fig. 11.

WITNESSES:
J. E. Wakeley
C. S. Sheldon.

Virginia C. Baltzell INVENTOR

BY

W. J. Wakeley her

ATTORNEY.

UNITED STATES PATENT OFFICE.

VIRGINIA C. BALTZELL, OF MADISON, WISCONSIN.

APPLIANCE FOR HANGING AND ADJUSTING WINDOW-CURTAINS.

SPECIFICATION forming part of Letters Patent No. 492,755, dated February 28, 1893.

Application filed May 24, 1892. Serial No. 434,219. (No model.)

To all whom it may concern:

Be it known that I, VIRGINIA C. BALTZELL, a citizen of the United States, residing at Madison, in the county of Dane and State of Wisconsin, have invented certain new and useful Appliances for Hanging and Adjusting Window-Curtains, of which the following is a specification.

My invention relates to appliances for hanging fringing and vertically and laterally adjusting the cornices from which window curtains are suspended so that the same may be changed to different elevations; swung on the one hand to the wall and on the other hand to the window, door, or other location at such several elevations; the appliances being automatically locked in all such positions, and the operator standing on the floor in one position.

While my invention is especially applicable to cornices carrying window curtains and is herein so drawn and mainly described, it is to be understood that I contemplate its application to cornices supporting portières.

The advantages of my improvement are: curtains may be temporarily turned away from the windows to admit light, or when the windows are opened, to escape dust, rain and smoke from the outside, and portières may be temporarily turned away from door-ways; curtains may be depressed to within easy reach dusted &c., their folds thrown over or around their cornices, then elevated and swung to positions away from the windows, while the floor, frames and walls are also dusted and cleaned; when the cornices are again depressed, the folds of the curtains thrown down properly arranged and draped, and the cornice, with the curtain, elevated and swung to its place over the window; similarly, all fixtures to which my device is applied may be depressed arranged swung laterally and restored to their place; in all its positions, my device being automatically locked, prevents accidental swinging or falling; and all operations of my appliances are conducted without the use of step-ladder or chair.

In order that my invention may be fully understood I will proceed to describe it with reference to the accompanying drawings in which

Figure 1. is a front elevation of my appliances upon both sides of a window frame, holding cornices, one of the latter supporting

a curtain. Fig. 2. the same, without curtain, the cornices depressed to the lower position, and one of the latter turned from the window; Fig. 3. a top view of Fig. 2; Fig. 4 a top view of window casing with tubes attached. Fig. 5, a front elevation of upper end of tube; Fig. 6, a horizontal section through tube on line *m n*, Fig. 5; Fig. 7 same on line *o p*, Fig. 5; Fig. 8 same on line *q r*, Fig. 9; Fig. 9, right side elevation of Fig. 5; Fig. 10, plan view of rod; and Fig. 11, right side elevation of rod showing brackets.

In the said drawings *e e* designate two metal cylindrical rods which constitute the carriages of the curtain cornices, one being on each side of the window upon the inside of its casing supported by the cylindrical tube or case as hereinafter described, and extending, when at its highest elevation, from the inside of the upper corner of the cornice which supports the curtain downward along the casing to the height of the convenient reach of the operator as he stands upon the floor.

Upon the inner side or side toward the room, of each rod, a bracket *d* is attached near the upper end, and also another similar bracket *d* is attached near the lower side of the curtain cornice. The brackets project a distance inwardly beyond the case equal to the width of the return piece of the cornice, and the brackets being there bent at right angles, thence project laterally toward the window a little distance along the inside of the main or lateral part of the cornice to which they are fastened; the brackets being thus inverted L shaped, fitting and fastened in the inside of the corners formed by the main body of the cornice and its return piece, so that the cornice will be elevated, depressed and swung laterally with the corresponding movements of the rods or carriages *e e*; and the rods brackets and attachments will be in positions to be covered by the curtains. The rods *e e* also have another office, and form journals, which with the cylindrical tubes or cases hereinafter mentioned, as bearings, form hinges upon which the cornices may be swung laterally to the one hand over the windows and to the other to the wall adjacent. The said brackets *d d* also have another office, and are guided in all the slots of the said tube as hereinafter described, and in turn guide the cornices, and when in the slide or

switch slots of the tube are there locked by the bearing weight upon them.

i i designate cornices held and operated by the carriage rods *e e*. They are constructed in open Moorish fret work, and may be constructed in fret or grill work, or otherwise, and in any form admitting of carrying the curtains suspended therefrom; and may be constructed of wood.

l l designate curtains hung upon the inside of the cornices preferably upon removable rods, hooks or in other temporary manner, to allow the easy removal and replacement of the curtains as they are placed within reach and restored to position by the operation of the carriage rod.

a a designate cylindrical tubes or cases the length of the rods *e e*, and they embrace such rods when the latter are placed in either of their positions contiguous to the window casings; and as the central slots of the cases hereinafter mentioned open to the lower ends of such cases, the rods, with the cornices which they carry, may be removed from and replaced upon the window casings at will; the brackets upon the rod entering and leaving the slots in the cases at the lower end. The said tubes *a a* have throughout their inner face, or face toward the room, a slot *h*, which receives the brackets *d d* when the rods are placed in the tubes. The tubes *a a* form tracks for the rods *e e* in the vertical movements of the latter and furnish bearings hinging the rods for swinging laterally when their brackets are at the switch slots, now to be described.

Besides the slot *h*, the tubes *a a* have, each, the three inverted *L* shaped switch slots *b b* on each side of the first slot *h*; two such slots being opposite each other near the upper end of the tube, and a second pair being below, at intervals equal to the distance between the brackets *d d*, and a third pair at similar intervals below the second pair respectively; so that the three pairs of switch slots will provide for the admission of the two brackets *d d* at two different elevations as the rod is swung to one hand, and at the same time two elevations as the rod is swung to the other hand. The two of such switch slots which are next adjacent, and on the same side of the central slot, receive the brackets *d d* respectively as the cornice is swung to the side on which they are located; and the weight brings the brackets down into the vertical arm of such inverted *L* shaped slot; by which the rod remains locked until manually elevated.

The tubes or cases *a a* are attached to the window casing *j* the upper ends beneath the inside corner of the cornice by screwing the feet *c c* on the casing; one of which feet is placed at each end of the tubes on its inner face.

k k designate the screws. The tubes are thus permanently in the proper positions for receiving, supporting, and forming the tracks for the rods; while the slots form the main and switch tracks for the brackets.

For greater convenience in operating the rods *e e*, the inwardly projecting circular handle *g* is attached to each rod, having a neck *f*, in the slot *h*, and being in a position where it will enter a lower switch slot as the brackets enter the upper ones.

The single bracket located near the summit of the rod *e*, may be attached to the rod without its fellow bracket.

What I claim as my invention, and desire to secure by Letters Patent, is—

1. An adjustable support for a curtain consisting of a vertical rod, brackets thereon carrying the curtain cornice, and a tube containing the rod and having a slot throughout its length and lateral switch slots receiving the brackets; all said parts combined substantially as set forth.

2. The combination of a vertical rod holding brackets which carry a curtain cornice, and a case affixed to the window casing, forming a combined track and bearing for the rod, and having an opening for the vertical rod and series of inverted *L* shaped openings for lateral and vertical movements of the brackets substantially as and for the purposes set forth.

3. The combination of a vertical rod supporting bracket thereon, and a standard having an opening for the rod and bracket and a series of openings coursing laterally thence downwardly receiving and locking the brackets substantially as described.

4. In combination the cylindrical carriage the brackets thereon, and the case partially inclosing the carriage and having series of slots coursing laterally and thence downwardly which at times receive and lock the brackets.

5. In combination with a vertical rod carrying brackets which support a drapery window curtain, a guide for the rod attached to the casing and having a front and lateral-vertical slots traversed by the brackets substantially as and for the purposes set forth.

6. In combination with a vertical rod having a bracket attached to the cornice of a window curtain a guide inclosing the rod having for the bracket a slot in front and slots extending therefrom first laterally and then vertically whereby the curtain may be swung and locked either in front of or away from the window.

7. In combination a vertical rod carrying a bracket which supports a window curtain cornice a guide attached to the casing, for the rod and bracket, having for the bracket a vertical opening in front and slots extending therefrom either way first laterally, and then downward whereby the curtain may be swung and locked upon the window or upon the wall adjacent.

VIRGINIA C. BALTZELL.

Witnesses:

CHAS. E. BUELL,
J. E. WAKELEY.