

(No Model.)

R. W. SCOTT.
SLEEVE FOR KNITTED GARMENTS.

No. 493,224.

Patented Mar. 7, 1893.

FIG. 1.

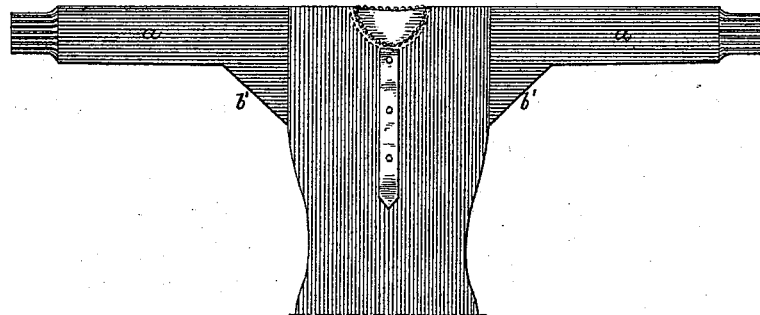


FIG. 2.

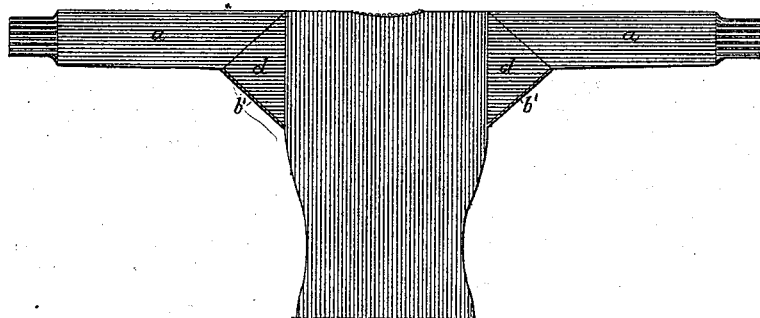


FIG. 3.

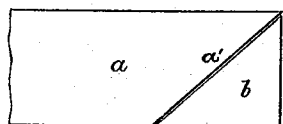


FIG. 4.

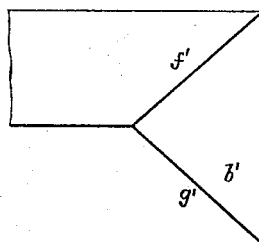


FIG. 5.

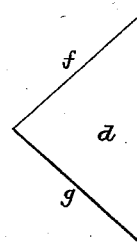


FIG. 6.

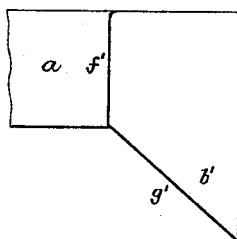


FIG. 7.

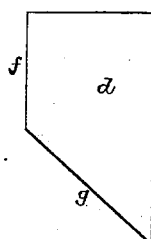
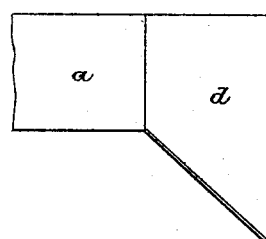


FIG. 8.



Witnesses:
Alex. Barkoff.
Hamilton D. Turner.

Inventor:
Robert W. Scott
by his Attorneys
Howson & Howson

UNITED STATES PATENT OFFICE.

ROBERT W. SCOTT, OF PHILADELPHIA, PENNSYLVANIA, ASSIGNOR OF ONE
HALF TO LOUIS N. D. WILLIAMS, OF SAME PLACE.

SLEEVE FOR KNITTED GARMENTS.

SPECIFICATION forming part of Letters Patent No. 493,224, dated March 7, 1893.

Application filed December 5, 1892. Serial No. 454,085. (No model.)

To all whom it may concern:

Be it known that I, ROBERT W. SCOTT, a citizen of the United States, and a resident of Philadelphia, Pennsylvania, have invented certain Improvements in Sleeves for Knitted Garments, of which the following is a specification.

The object of my invention is to provide, at small expense, an acceptable form of sleeve for knitted garments of that class in which the sleeve is provided with a gusset at the point of connection with the body of the garment, and this object I attain in the manner hereinafter set forth, reference being had to the accompanying drawings, in which—

Figure 1, is a front view of the upper portion of a knitted shirt having sleeves made in accordance with my invention. Fig. 2, is a rear view of the same. Figs. 3, 4 and 5, are diagrams illustrating the method of carrying out my invention; and Figs. 6, 7 and 8, are diagrams illustrating a modified plan of carrying out the invention.

The fabric may be either plain or ribbed, and the body of the garment may be made in any of the usual ways, my invention relating wholly to that portion of the sleeve which is attached to the body at the arm holes.

In carrying out my invention I take a tube of fabric *a* which is of the proper diameter for the body of the sleeve and at the end of said tube which is to be connected to the body of the garment I form, in that half of the tube which is to constitute the rear of the sleeve a diagonal incision *a'* as shown in Fig. 3 so as to provide a flap *b* which can be turned down to form a tapering extension or gusset *b'* in one piece with the front half of the sleeve tube. A triangular piece *d* of knitted web is then sewed onto the inner end of the sleeve, the edge *f* of this triangular piece being united to the edge *f'* of the rear half of the sleeve tube and the edge *g* being united to the front edge *g'* of the tapering gusset *b'*. By this method of manufacture the seams are all brought upon the back of the sleeve where their presence is unobjectionable, the front face of the sleeve presenting, both in the body of the sleeve, and in the gusset, a continuous fabric in which all the wales of stitches run in the same di-

rection, so that the sleeve is, in appearance, much more acceptable than those in which a tapering gusset is united to the bottom of the sleeve tube at the inner end of the same so as to provide the proper enlargement of the sleeve at the arm hole, for in such case there must always be in the front of the sleeve a seam where the top of the gusset is united to the tube forming the body of the sleeve.

Although I prefer the method before described for carrying out my invention, it will be evident that the essential features of my invention will be embodied in a sleeve made as shown in Figs. 6, 7 and 8. In this case the rear half of the sleeve tube is cut straight across from top to bottom at the proper distance from the end and the inner lower corner of the depending flap is then cut off so as to form the triangular flap *b'*, as shown in Fig. 6. A piece partly rectangular and partly triangular such as shown in Fig. 7 is then applied to the cut portion of the sleeve tube and secured along its top edge to the top edge of the front half of the sleeve tube, the edges *ff'* and *g g'* being then united in order to complete the sleeve with tapering gusset, as shown in Fig. 8. This construction, however, is objectionable because of the waste of material which it involves and because it necessitates a seam directly across the ends of the wales and parallel with the courses of stitches in the sleeve tube instead of the diagonal seam which is involved in the preferable method of construction.

Having thus described my invention, I claim and desire to secure by Letters Patent—

1. The within described sleeve for knitted garments, said sleeve consisting of a knitted tube cut in the rear half at the arm hole end so as to form a depending tapered gusset in one piece with the front of the tube and having a filling piece inserted at the back, said filling piece being united to the front edge of the gusset and to the cut edge at the back of the sleeve tube, substantially as specified.

2. The within described sleeve for knitted garments, said sleeve consisting of a knitted tube having a diagonal cut in the rear half of the tube at the arm hole end so as to form a depending tapered gusset in one piece with the

front of the sleeve tube and having a triangular filling piece inserted at the rear, the lower diagonal edge of said filling piece being united to the diagonal front edge of the gusset, and the upper diagonal edge of the filling piece being united to the diagonal cut edge at the rear of the sleeve tube, substantially as specified.

In testimony whereof I have signed my name to this specification in the presence of two subscribing witnesses.

ROBERT W. SCOTT.

Witnesses:

HARRY SMITH,
JOSEPH H. KLEIN.