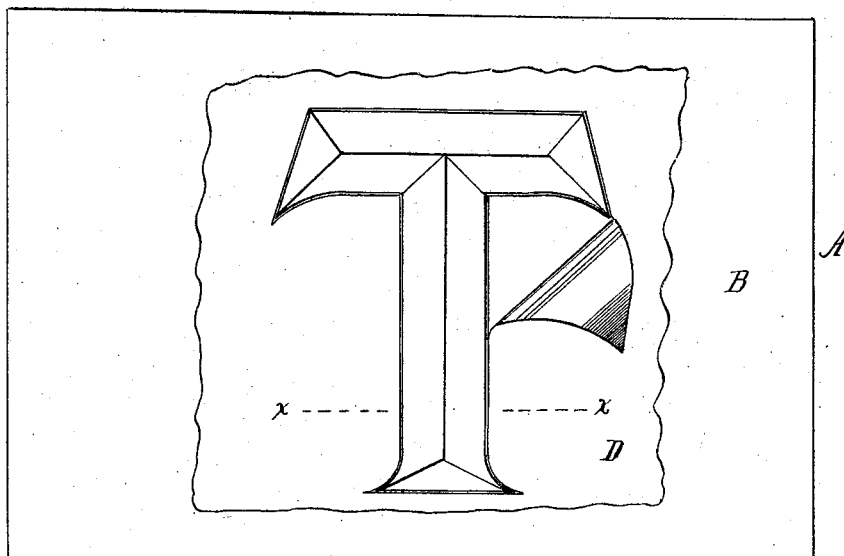


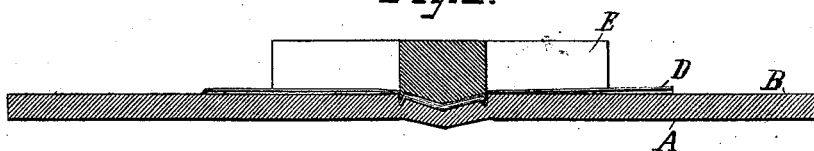
(Specimens.)

C. D. VASSILIADES.  
PROCESS OF FORMING LETTERS OR OTHER DESIGNS ON CARDBOARD.  
No. 522,442. Patented July 3, 1894.

*Fig. I.*



*Fig. II.*



WITNESSES:

*E. R. Stone*

*Wm. W. Wade*

INVENTOR

*Constantine C. Vassiliades*

BY

*Francis C. Bowen.*  
ATTORNEY.

# UNITED STATES PATENT OFFICE.

CONSTANTINE D. VASSILIADES, OF NEW YORK, N. Y.

PROCESS OF FORMING LETTERS OR OTHER DESIGNS ON CARDBOARD.

SPECIFICATION forming part of Letters Patent No. 522,442, dated July 3, 1894.

Application filed October 12, 1893. Serial No. 488,008. (Specimens.)

*To all whom it may concern:*

Be it known that I, CONSTANTINE D. VASSILIADES, a subject of the Queen of Great Britain, and a resident of New York, in the county of New York and State of New York, have invented certain new and useful Improvements in Processes of Forming Letters or other Designs on Cardboard, of which the following is a specification.

10 My invention is a process of forming letters or other characters from paper upon card board, as in the manufacture of signs, or the like, and it has for its object to produce a superior article at a comparatively low cost.

15 In the accompanying drawings I have illustrated a letter formed by my process.

Figure I is a face view thereof, and Fig. II a cross section with a die in position thereon.

In carrying out my process I take a sheet 20 A of card board, of the desired and usually with a water-proof surface B, and place thereon a sheet D, of paper from which the letter is to be formed. I now subject the paper sheet A to the action of a character-die 25 E, namely one adapted to produce the desired character, under heat and pressure. The edges of this die E which conform to the outline of the desired character, are made sharp so as to cut the paper; and by the action of 30 the die, a portion of the paper representing the character, is fastened to the paper, due to the heated die dissolving the adhesive substance all being done in one operation. Before removing the die E, from the paper, I

now tear away the remaining and surplus portion of the paper around the die, leaving the desired character upon the card board. 35

The paper which I generally employ is of a contrasting color to the surface of the card board, and may be enameled, which manifestly enhances the effect of the character formed therefrom. I also usually construct the die E, to emboss the two sheets A, D, so as to impart to the character the effect of intaglio or relief. 40

By my process as set forth I am enabled to produce a sign or other like article of a superior finish at a comparatively low cost. 45

What I claim as new, and desire to secure by Letters Patent, is—

The herein described process of forming signs from paper consisting of placing upon a sheet of bristol board provided with a water-proof enamel which will soften under the effect of heat, a sheet of thin paper of a contrasting color, provided with a gloss which is unaffected by heat and then under the combined influence of heat and pressure simultaneously cutting said thin sheet in lines conforming to the letter or character to be cut, 50 and forcing the said letter or character to adhere to the enamel board, and then removing the surplus portion as set forth. 55 60

CONSTANTINE D. VASSILIADES.

Witnesses:

GEORGE W. COLLES,  
FRANCIS C. BOWEN.