

(No Model.)

C. HICKETHIER & J. THEEMLING.
WINDOW GUARD.

No. 522,523.

Patented July 3, 1894.

Fig. 1.

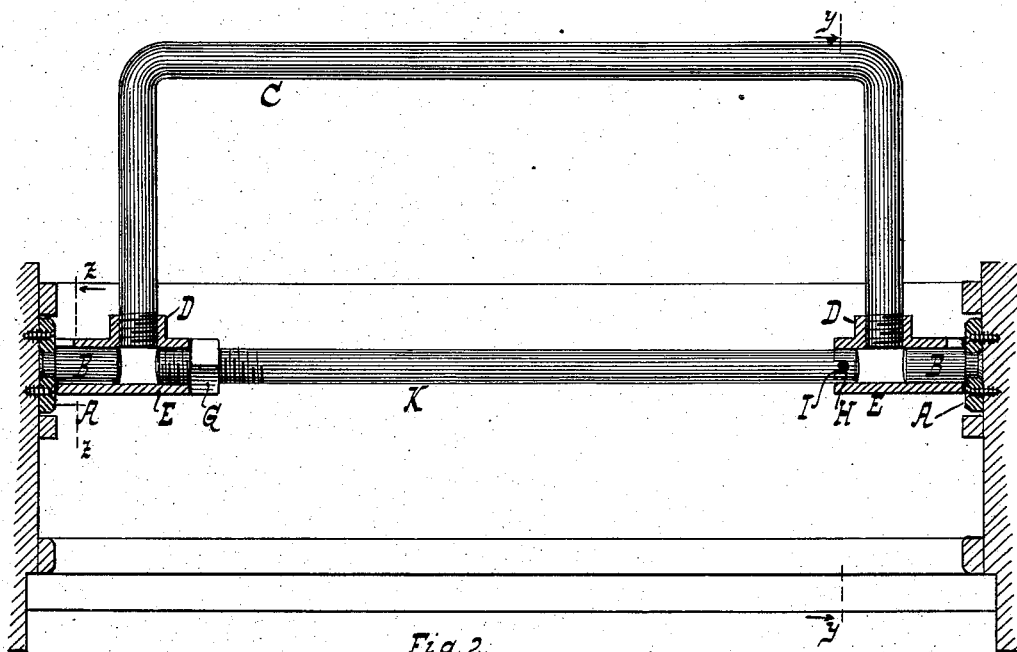


Fig. 2.

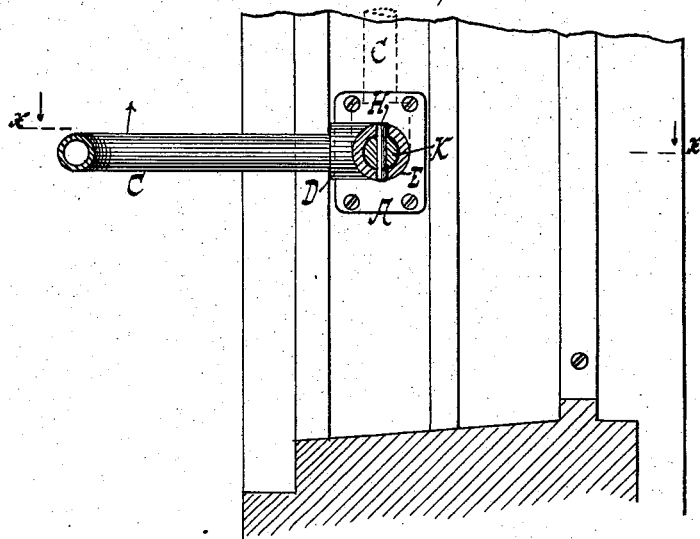
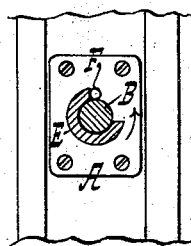


Fig. 3.



WITNESSES:

William Miller
Chas. E. Poengen

INVENTORS

Jacob Theemling
Charles Hickethier

BY

Hauff & Hauff
ATTORNEYS.

UNITED STATES PATENT OFFICE.

CHARLES HICKETHIER AND JACOB THEEMLING, OF UNION HILL,
NEW JERSEY.

WINDOW-GUARD.

SPECIFICATION forming part of Letters Patent No. 522,523, dated July 3, 1894.

Application filed October 12, 1893. Serial No. 487,993. (No model.)

To all whom it may concern:

Be it known that we, CHARLES HICKETHIER and JACOB THEEMLING, both citizens of the United States, residing at Union Hill, in the county of Hudson and State of New Jersey, have invented new and useful Improvements in Window-Guards, of which the following is a specification.

This invention relates to an improvement in window guards and the invention consists in the novel features pointed out in the following specification and claims and illustrated in the annexed drawings, in which—

Figure 1 is a plan view of the guard partly in section along xx Fig. 2. Fig. 2 is a section along yy Fig. 1. Fig. 3 is a section along zz Fig. 1.

In the drawings the letters A indicate two brackets secured in the outer grooves of a window frame, said grooves forming the guides for the outer or uppersash (not shown). From the brackets A extend studs B on which swings a U-shaped frame C, of iron or other suitable material. This frame is screwed or secured to the portions D of the T parts D E, the portions E of which form sleeves rotating on the studs B. As seen in Fig. 3 a part of one or both sleeves E is cut away, and in the cutaway portions extend stop pins F projecting from the brackets A. The stops F limit the swing of frame C to the horizontal position shown in Fig. 2 in full lines and to the vertical position shown in said Fig. 2 in broken lines.

A cross brace or rod K is supported in the sleeves E and is suitably screwthreaded for the reception of nut G. The brace K has a stud H adapted to sit in a recess or recesses I in one of the sleeves E and when the stud H is inserted into recess I and the nut G tightened against the other sleeve E the brace K is secured in place and serves to prevent anyone from falling out of the window and at the same time the brace can be readily loosened and removed by running nut G toward the center of the brace. When the brace is removed the guard or frame C is serviceable for the support of a person washing the outside of the window.

What we claim as new, and desire to secure by Letters Patent, is—

1. The combination of brackets adapted to be secured to a window-frame and having journal studs and stop-pins, sleeves journaled on the studs and having cut-away portions to receive the stop-pins, a guard-frame having its ends secured to the sleeves, and a brace-rod having its ends detachably connected with the sleeves, substantially as described.

2. The combination of brackets adapted to be secured to a window-frame and having journal-studs, sleeves journaled on the studs, stops for limiting the rotation of the sleeves on the studs, a guard-frame having its ends secured to the sleeves, and a brace-rod having its ends detachably connected with the sleeves, substantially as described.

3. The combination of brackets A, adapted to be secured to a window-frame and provided with journal studs B and stop-pins F, sleeves E journaled on the studs and having cut-away portions to receive the stop-pins, a guard-frame C having its ends secured to the sleeves, a brace-rod K fitted at one end to one sleeve and having at its opposite end a screw-threaded portion extending into the other sleeve, and a nut G mounted on the screw-threaded portion of the brace-rod, substantially as and for the purposes described.

4. The combination with the studs B of sleeves E adapted to turn on the studs, and a cross bar or brace and a frame secured to said sleeves, said cross bar being provided with a screw thread and with a nut on the thread, said nut being adapted to sit against one of the sleeves and a stud adapted to sit against the other sleeve, said last named sleeve being recessed for the reception of the stud substantially as described.

In testimony whereof we have hereunto set our hands in the presence of two subscribing witnesses.

CHARLES HICKETHIER.
JACOB THEEMLING.

Witnesses:

WM. C. HAUFF,
E. F. KASTENHUBER.