

(No Model.)

F. W. HEILMANN.
BAG FRAME.

No. 522,832.

Patented July 10, 1894.

Fig. 1,

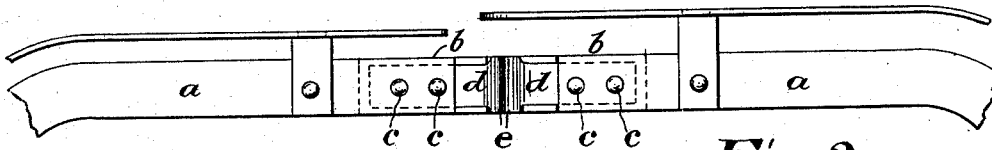
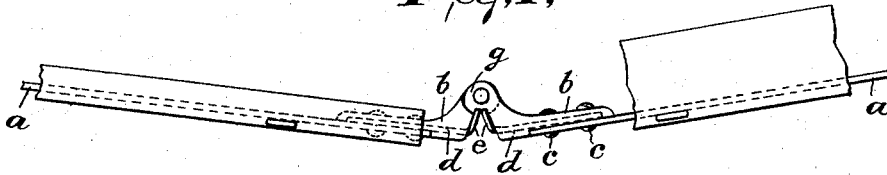


Fig. 2,

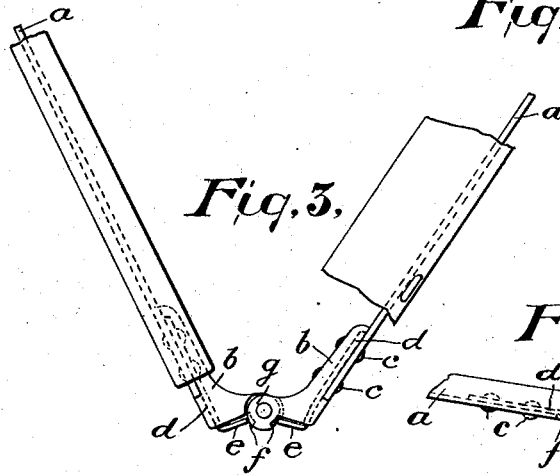


Fig. 3,

Fig. 6,

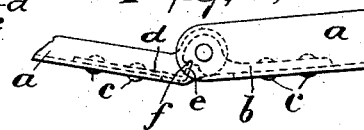


Fig. 4,

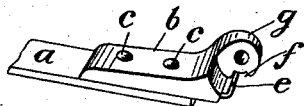
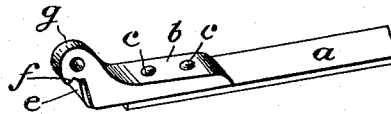


Fig. 5,



Witnesses

Inventor

Howard B. Shuman
Print. Lillinger.

Frederick W. Heilmann,

By Drake & Co. Attys.

UNITED STATES PATENT OFFICE.

FREDERICK W. HEILMANN, OF NEWARK, ASSIGNOR TO THE J. F. KITCHELL MANUFACTURING COMPANY, OF HARRISON, NEW JERSEY.

BAG-FRAME.

SPECIFICATION forming part of Letters Patent No. 522,832, dated July 10, 1894.

Application filed January 13, 1894. Serial No. 496,705. (No model.)

To all whom it may concern:

Be it known that I, FREDERICK W. HEILMANN, a citizen of the United States, residing at Newark, in the county of Essex and State of New Jersey, have invented certain new and useful Improvements in Bag-Frames; and I do hereby declare the following to be a full, clear, and exact description of the invention, such as will enable others skilled in the art to which it appertains to make and use the same, reference being had to the accompanying drawings, and to letters of reference marked thereon, which form a part of this specification.

The object of this invention is to provide bag frames with a more simple, effective and less expensive device for automatically holding the mouth of the bag open while filling said bag or examining or removing its contents and to secure other advantages hereinafter referred to.

The invention consists in the improved device and in the combination and arrangement of the parts connected therewith, as herein set forth, and finally pointed out in the claims.

Referring to the accompanying drawings, in which similar letters of reference designate corresponding parts in each of the figures where they occur, Figure 1 represents in elevation one end of a bag frame, embodying my invention, the jaws being open. Fig. 2 is a plan of the same, looking upward. Fig. 3 is a view similar to Fig. 1, except that the jaws are partially closed. Figs. 4 and 5 are details of the hinge portions, in perspective; and Fig. 6 represents, in elevation, a modification of the invention.

In said drawings, *a* designates the jaws of the bag frame and *b* the leaves of the hinges which connect said jaws and to which they are secured by means of rivets *c* or of which they form a part, as shown. The hinge end of each of these leaves is formed into an L-shape which throws the hinge and knuckles out of line with the leaves similar to a rule joint. To the back of one, or both of said leaves is secured a spring catch composed of a spring plate *d* having a lip *e*, bent at an angle thereto and adapted to automatically spring into engagement with a shoulder or notch, *f*, formed on or in the opposite knuckles

g, of the hinge when the bag is opened and thereby hold the jaws open or extended until sufficient force is exerted thereon by the hands in closing the bag to unseat or dislodge said lip and thus allow the bag to be readily closed, as will be understood. Said spring catch may be secured in position, where the circumstances will permit, by the same rivets, *c*, which secure the jaws and hinges together, as indicated in Figs. 1, 2, 3, 4 and 5, or directly to the jaw, as indicated in Fig. 6. When the catch is secured between the jaw of the frame and the leaf of the hinge, as shown in Figs. 1 and 2, the main portion of the catch may be slightly reduced to fit between two shoulders *d'*, *d'*, which project out even with the ends of the jaws and against which they abut, thereby forming a guard upon each side of the catch to prevent its catching upon external objects. The head of the catch is also preferably made broad enough to extend entirely across both of the knuckles of the joint and thereby give a good substantial bearing surface for the catches.

It will be understood that when two spring catches are used and the jaws are opened as in Figs. 1 and 2, the notches, *f*, in the knuckles register with one another, thus allowing the lips *e* to freely spring into engagement therewith, but when one spring only is used, as in Fig. 6, the notch, *f*, is only formed in one knuckle.

By locating the joint and knuckles out of line with the jaws of the frame and bending the ends of the catches at an angle to the main portion, it will be seen that when the jaws are closed the pressure of the knuckles will be outward and away from the point of attachment of the main portion of the catch and will thus cause the end of the catch to slip out of the notch when the pressure exceeds a certain amount without danger of breaking the end of the catch, which must necessarily be short in such a limited construction.

Having thus described my invention, what I claim, and desire to secure by Letters Patent, is—

1. In a bag frame, the combination, with the jaws of the frame, of hinged leaves thereon, the knuckles of which are out of line with the ends of the jaws, and at least one of which

is provided with a notch, and a spring secured to the opposite leaf, the free end of which is bent at an angle to the main portion, and is adapted to be engaged with the notch portion of the knuckle when the jaws are opened, and to be automatically released when the jaws are forced together, substantially as set forth.

2. In a bag frame, the combination, with the jaws of the frame, of a hinged leaf secured to the ends thereof, said leaves being each provided with a shoulder against which the ends of the frame abut, and the knuckles of which are notched to form shoulders, and

an L-shaped catch secured between each of the jaws and its respective leaf and having its free end lying between the shoulders and adapted to engage with the shoulders of the knuckles when the jaws are open, substantially as set forth.

In testimony that I claim the foregoing I have hereunto set my hand this 28th day of December, 1893.

FREDERICK W. HEILMANN.

Witnesses:

OLIVER DRAKE,

ROBERT SOLLBERGER.