

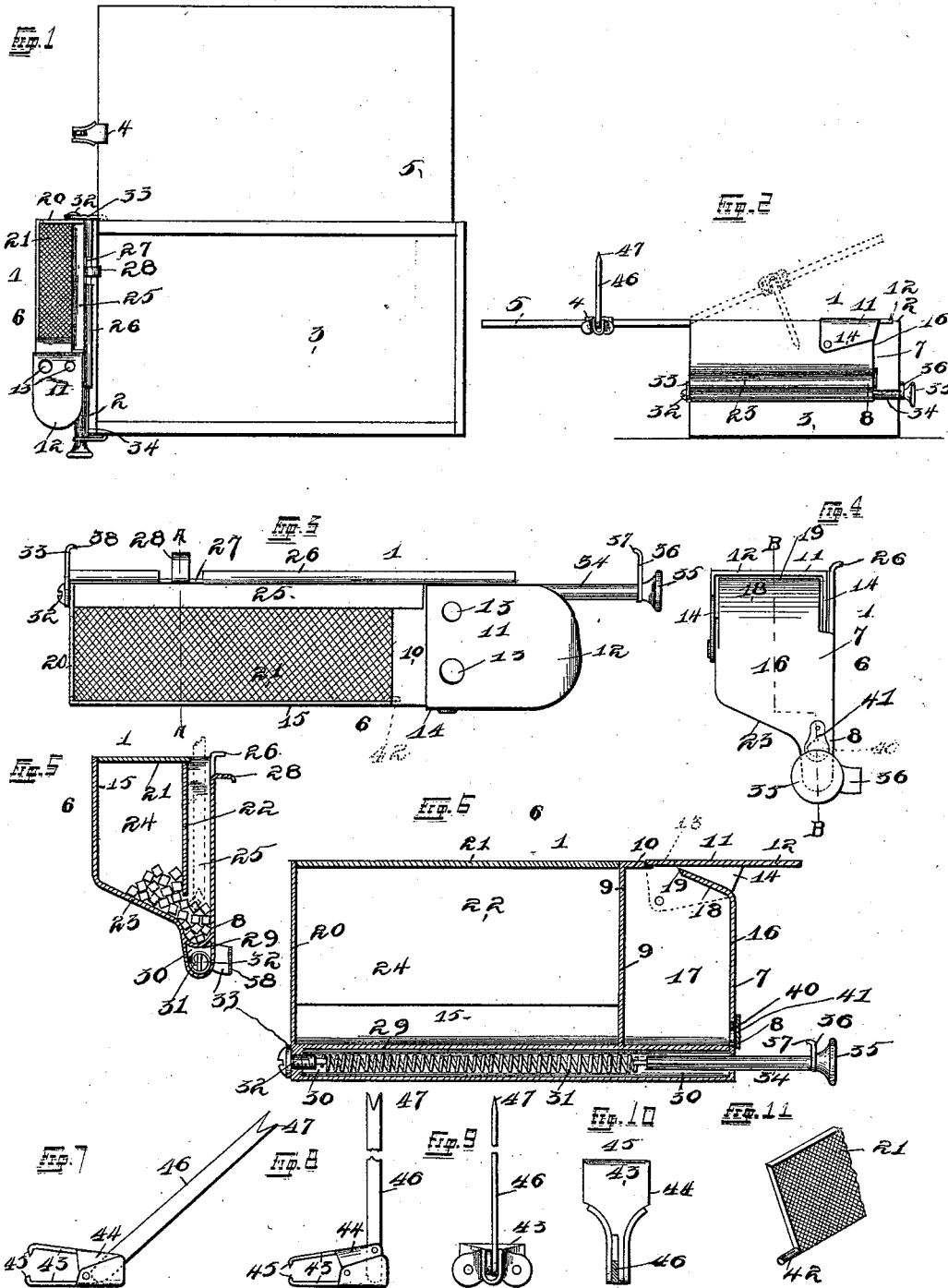
(No Model.)

C. MYHRE.

MATCH BOX AND CIGAR CUTTER ATTACHMENT FOR CIGAR BOXES.

No. 523,481.

Patented July 24, 1894.



Witnesses
Alfred A. Eicher
Herbert L. Robinson

Inventor
Chris Myhre
By Hydon Higdon Longan
Attorneys

UNITED STATES PATENT OFFICE.

CHRIS MYHRE, OF ST. LOUIS, MISSOURI, ASSIGNOR OF FIFTY-ONE ONE-HUNDREDTHS TO AUGUST B. KAMMANN, OF SAME PLACE.

MATCH-BOX AND CIGAR-CUTTER ATTACHMENT FOR CIGAR-BOXES.

SPECIFICATION forming part of Letters Patent No. 523,481, dated July 24, 1894.

Application filed March 20, 1893. Serial No. 466,839. (No model.)

To all whom it may concern:

Be it known that I, CHRIS MYHRE, of the city of St. Louis and State of Missouri, have invented certain new and useful Improvements in Match-Box and Cigar-Cutter Attachments for Cigar-Boxes, of which the following is a full, clear, and exact description, reference being had to the accompanying drawings, forming a part hereof.

My invention relates to improvements in a "combined cigar cutter, match box, &c.," and consists in the novel arrangement and combination of parts, as will be more fully hereinafter described and designated in the claims.

The object of my improvement is to construct a device adapted to be temporarily secured to one end of a cigar-box and movable therefrom when the box has been emptied of the cigars. This device includes a cigar-cutter, a receptacle for matches, a means for withdrawing a single match when the lid of the box is open, and a place provided for the striking of the match.

In the drawings: Figure 1 is a top plan view of an ordinary cigar receptacle with my complete invention applied thereto. Fig. 2 is an end view of the device applied to the box, showing the box lid open and a different position of the same in dotted lines. Fig. 3 is a top plan view of the box attachment. Fig. 4 is an end view of the same. Fig. 5 is a vertical transverse sectional view taken on a line A—A in Fig. 3. Fig. 6 is a longitudinal vertical sectional view taken on a line B—B in Fig. 4. Fig. 7 is a detail enlarged view of the lid attachments showing the same in one position. Fig. 8 is a detail side view of the same showing the clamp in any position. Fig. 9 is a front detail elevation of the lid attachment, and Fig. 10, is a detail enlarged sectional view showing the clamping edges. Fig. 11 is a perspective view of one corner of the roughened plate showing the means by which it is hinged to the casing.

Referring to the drawings: 1 indicates my complete invention adapted to be secured to the end 2 of an ordinary cigar box 3, my invention further including an attachment 4 which is normally secured to the lid 5 and in this construction includes the means for withdrawing a single match from the match re-

ceptacle. A large attachment 6 consists of an elongated substantially rectangular shaped casing 7 with a depending narrowed portion 8 along the inner side thereof and continuous with the larger portion 7. The construction is divided into two parts by a vertical wall 9 adjacent the outer end, said wall 9 having an outwardly projecting flange 10 upon its upper end which is met by a hinged spring controlled cutting device 11. Said cutting device 11 consists of a top plate 12 provided in this instance with two different sizes of circular openings 13, the same having sharpened edges to carry out the function of the device. The top plate 12 has two depending side plates 14 by means of which the same are fitted or hinged to the side walls 15 of the construction.

The end plate 16 of the extending portion 17 has an upwardly and inwardly canted plate 18 having a sharpened edge 19. This plate is made of spring metal and with the hinged device 11 is pushed downwardly. The sharpened edge 19 passes the holes 13 through which the cigars are inserted and cuts the same off, the ends dropping into the extension 17. The spring function of the plate 16 causes the device 11 to return to its normal position, and in readiness for the next operation of cutting.

Hinged to the inner end wall 20 and the wall 9, at their upper extremities, and adjacent the outer side is a plate 21, the top of which is milled or roughened in any manner and the inner edge of which is adapted to rest upon a vertical wall 22 which connects said walls 20 and 9 and extends downwardly nearly to the bottom plate 23 which is canted to extend into the portion 8 of the construction. This forms a chamber 24 and a passage 25, the matches being placed in the chamber 24 and passing under the edge of the wall 22 into the passage 25 and they are removed from this passage by means of a device to be hereinafter described.

The inner wall 15 is provided on its upper edge with an outwardly projecting flange 26 adapted to fit over the upper edge of the end 2 of the cigar box. A portion 27 of said flange is removed, and a narrow projecting outwardly and downwardly curved arm 28 projects from the cut out portion 27, which is

adapted to engage in a small place cut out of the end of the box in alignment with said arm 28. Longitudinally through the narrowed portion 8 is a wall 29 which forms a chamber 30 at the extreme lower end of the construction, and in which is located a coil spring 31 to the inner end of which is secured a screw rod 32, the head of which projects outwardly through the end of the casing provided with an inwardly projecting plate 33 under its head to secure its position. Upon the upper end of the spring 31 is secured a bar 34 provided upon its end with a manipulating handle 35 and adjacent its head with an arm 36 having an inwardly projecting series of teeth 37. The plate 33 projects inwardly from the rear wall 15 of the box and is provided with an inwardly projecting series of teeth 38, to secure the device to the cigar-box. A small notch is cut in the upper edge of the same for the reception of the curved arm 28, and the teeth 38 upon the plate 33 are pushed into the rear wall of the box, and the bar 34 is drawn outwardly by the handle 35 until it is past the front wall of the box, when the spring is allowed to pull the same backwardly and engage the teeth 37 in the front wall of said box, thus securely holding the device in position. The wall 16 near the bottom wall 29 is provided with an opening 40 normally covered by a pivoted plate 41, this opening being provided in order that the cut off ends of the cigars may be removed from the receptacle 17. The roughened or serrated surface of the plate 21 presents the means for igniting the matches by contact, and in Fig. 11 is shown the manner by which I preferably hinge said plate 21 by means of projecting pins 42 which engage in the walls 20, and 9.

The lid attachment is especially detailed in Figs. 7, 8, 9 and 10 wherein it will be seen that it consists of two jaws 43, each having side plates 44 projecting from the same throughout a portion of their length, said jaws also being provided with inwardly projecting series of teeth 45. One of said jaws is of less width than the other and the side walls 44 of same fit a short distance within the larger one, and are pivoted at their outer extremity. A flat bar 46 is pivoted in the upper side of one of the jaws 43 adjacent the plate of the same, and the inner end of the same projects inwardly and engages the inner surface of the plate of the other jaw. When said bar 46 is turned in a position at right angles with the lower jaw, the teeth 45 are thrown inwardly toward each other and clasp the lid of the box, and owing to the leverage of said bar 46 the same are cast in this position unless pulled outwardly to release the action of the teeth in the wood of the lid. The bar is provided with two projecting teeth 47 in its extremity, which are adapted to engage one or two of the matches in the passage 25. The bar 46 is placed at such a point in the width of the lid 5 as will engage said matches when the lid is entirely closed, and when the lid is

opened the teeth engage one or more of the matches and withdraw the same through the passage 25 and bring them into view and in readiness for the user to take out. It will therefore be seen that in carrying out the idea of my invention the lid attachment is necessary to the successful operation and carrying out of the especial function and a certain part of the construction applied to the box.

It is believed I have combined a number of features in this construction which will prove of value for application to the cigar box, and the readiness with which it may be removed and applied to another box when the same is empty, especially recommends it for general use among retailers, far more especially among the class of people who purchase their cigars by the box and keep them at their home or place of business. This enables the person to have matches, a cigar cutter and means for lighting the matches at hand in readiness whenever the lid is opened to remove a cigar.

Slight changes could be made in the form and location of parts without in any way interfering with the scope of my invention.

The parts are preferably made of some plated metal to present a finished appearance and the plate 21 can be roughened or milled in any desired manner.

From the above it will be seen that I have provided an improved match-box with opposite toothed clamping jaws located on the opposite vertical ends of said box and arranged to assist in temporarily securing such box upon the outside of a cigar-box.

Having fully described my invention, what I claim is—

1. A match box detachably secured upon a cigar box and arranged with a movable arm to take out of said match box and deliver a single match upon opening the lid of said cigar box, substantially as herein specified.

2. A match box detachably secured to one end of a cigar-box, in combination with a device detachably secured to the lid of the box to engage matches in said match box when said lid is in a closed position and to remove a single match from said match box upon opening the lid of said cigar box, substantially as herein specified.

3. An improved attachment for cigar-boxes, constructed with a receptacle for matches, said receptacle having a passage into which matches are fed from said receptacle, and means which engage and withdraw a single match from said passage when the lid of the cigar box is opened, substantially as herein specified.

4. An improved attachment for cigar boxes, constructed with a receptacle for matches, a passage into which matches are fed from said receptacle, means located on the cover of the cigar box for withdrawing a match from said passage when the lid of the cigar box is opened, said receptacle having its upper side closed by a lid hinged thereto, said lid hav-

ing a roughened upper surface closely adjacent to said passage, and means for holding the receptacle upon the end of a cigar box, substantially as herein specified.

5 5. The improved attachment for cigar boxes constructed with a match-receptacle, means for detachably securing said receptacle to a cigar box, said receptacle having a passage into which matches are fed therefrom, and a
10 device detachably secured to the edge of the cigar box lid adjacent said passage and to remove matches from said passage when the lid is opened, substantially as herein specified.

15 6. The improved attachment for cigar boxes constructed with a match receptacle, means which temporarily hold said receptacle in contact with the end of an ordinary cigar box, a flange formed upon the upper inner edge of the casing of said receptacle to engage the up-

per edge of the end of the cigar box to prevent 20 vertical movement of same thereon, a passage having an open upper side and located adjacent said receptacle, a passage between said match receptacle and said first mentioned passage, and an arm detachably secured to 25 the end of the cigar box lid and in said first mentioned passage to engage matches therein when the cigar box lid is in closed position and remove matches therefrom when said cigar box lid is placed in an open position, 30 substantially as herein specified.

In testimony whereof I affix my signature in presence of two witnesses.

CHRIS MYHRE.

Witnesses:

HERBERT S. ROBINSON,
ALFRED A. EICKS.