

(No Model.)

2 Sheets—Sheet 1.

S. N. BICKERSTAFF.  
SWORD BELT.

No. 523,828.

Patented July 31, 1894.

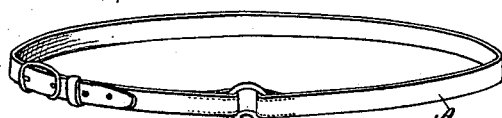


Fig. 1



Fig. 2

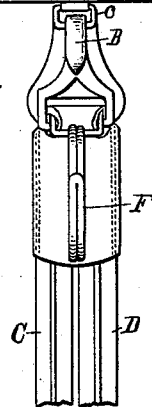


Fig. 3

Witnesses:

*Walter S. Wood*  
*Ben E. Chappell*

Inventor,

*Samuel N. Bickerstaff*  
By *Fred L. Chappell*  
Att'y.

(No Model.)

2 Sheets—Sheet 2.

S. N. BICKERSTAFF.  
SWORD BELT.

No. 523,828.

Patented July 31, 1894.

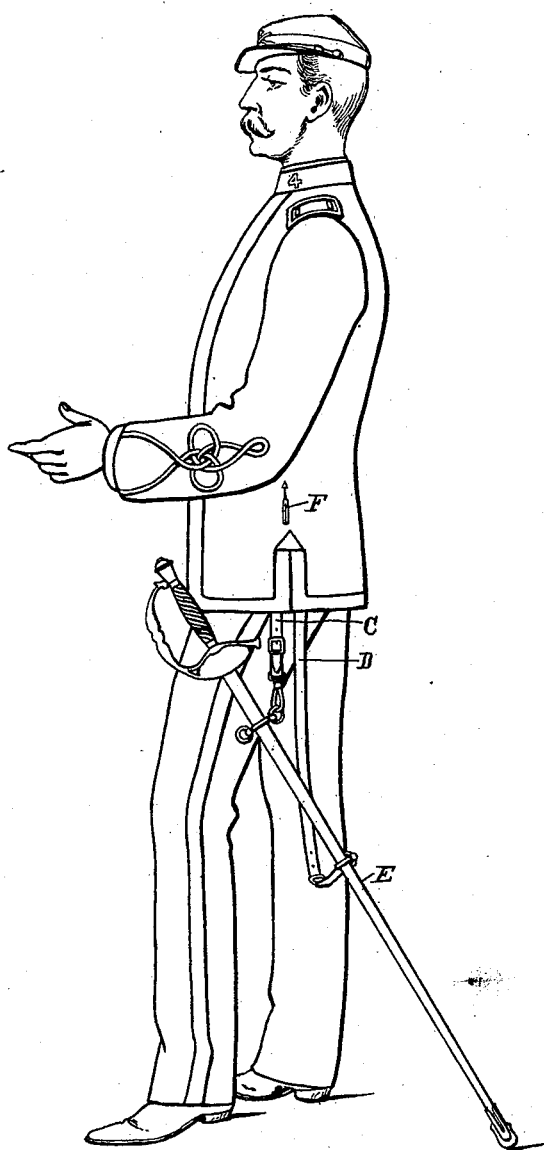


Fig. 4

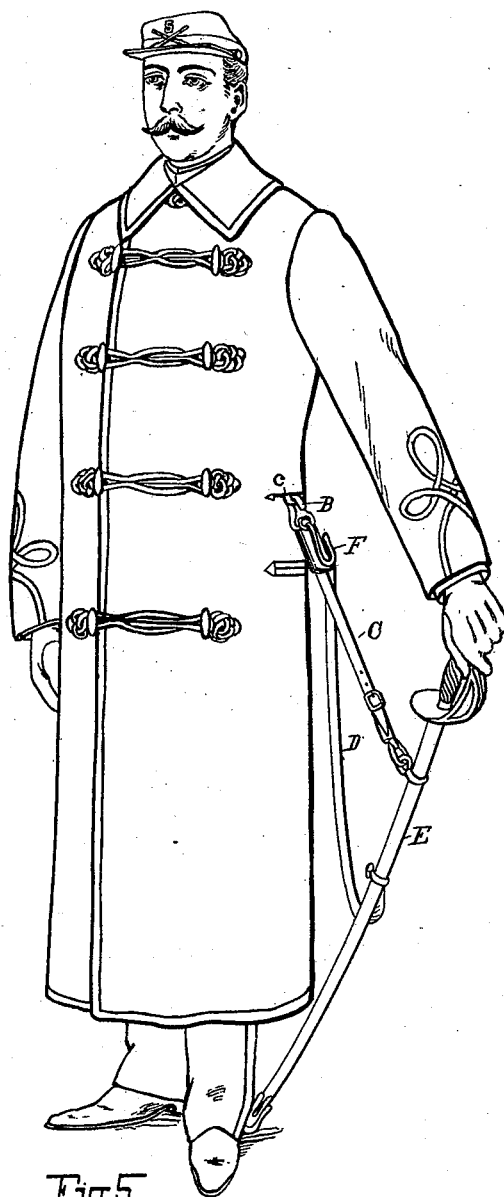


Fig. 5

Witnesses:

Walter S. Wood

Wm. E. Chappell

Inventor,

Samuel N. Bickerstaff

By Fred L. Chappell  
Att'y.

# UNITED STATES PATENT OFFICE.

SAMUEL N. BICKERSTAFF, OF KALAMAZOO, MICHIGAN, ASSIGNOR TO THE  
HENDERSON-AMES COMPANY, OF SAME PLACE.

## SWORD-BELT.

SPECIFICATION forming part of Letters Patent No. 523,828, dated July 31, 1894.

Application filed September 29, 1893. Serial No. 486,768. (No model.)

### *To all whom it may concern:*

Be it known that I, SAMUEL N. BICKERSTAFF, a citizen of the United States, residing at the city of Kalamazoo, in the county of Kalamazoo and State of Michigan, have invented a certain new and useful Sword-Belt, of which the following is a specification.

My invention relates to belts and more particularly to sword belts with detachable slings and the means of attaching the sword to them.

Sword belts as heretofore constructed have been made with two slings for carrying the sword attached to loops inside the belt, one on the left hip and another at the center of the back. The slings are not made detachable in the old style belt.

The objects of my invention are to provide a sword belt with detachable slings for convenience in packing the articles and also to provide a sword belt with the slings attached at one point for convenience in attaching and detaching; and also for convenience when the belt is worn under a coat or blouse. I accomplish these objects by the devices shown in the accompanying drawings, in which—

Figure 1, is a view in perspective showing my invention embodied in a fatigue belt. Fig. 2, is a detail view showing the method of attachment to a lace or dress belt. Fig. 3, shows details of construction of the snap hook and other adjacent parts. Fig. 4 is a view showing my invention as worn with a blouse, the belt being concealed by the garment and the sword hook F emerging through a slit in the side. Fig. 5, is a view showing my invention as worn with an over coat, the belt being concealed by the garment and both the slings and the remaining parts brought through a horizontal slit in the side of the coat.

Similar letters of reference refer to similar parts throughout the several views.

To the belt A is attached a ring or loop c. The sword E is attached to the slings C—D in the usual way. The slings are attached to the hook B by which they are secured to the belt at c. Just below the safety snap hook B the elongated sword hook F is attached. The hook B is made flat to take up as little space as possible. A flat spring b is attached to the back side of the hook and carries a catch a that passes through an opening in the

back of the hook B and up close to the front portion of it. It will thus be clear that when the hook B is hooked on to the loop c (see Fig. 3.) it will be in no danger whatever of becoming accidentally detached for the spring b which carries the catch a is held between the hook and the shield against the body of the wearer. The ring c presses the catch a to one side only and has no tendency to force it out. I make the hook B flat and of sufficient width to prevent it from turning on the loop c, because the slings must hang in the same relative positions at all times in order to hold the sword properly. The slings should be flat and stiff enough at their upper ends to prevent twisting. A separate hook similar to hook B could be attached to each sling C and D and answer the purpose of hook B, but this would be a useless multiplication of parts.

The greater superiority and convenience of my invention over the old style belt must be apparent on examination to those familiar with the state of the art.

When my improved belt is worn under a blouse instead of its being necessary to pull the whole of the forward sling through an opening in the side as in the old style all that is necessary is to pull the sword hook F out as seen in Fig. 4. The slings will loop under the edge or into the slit at the bottom when the sword is hung on the hook. Time will thus be saved in applying the articles and wear and tear of the garment prevented.

A greater saving is effected when my improved belt is worn under an over coat. With the old style belt where one sling was securely attached to the left side and the other to the middle of the back it was necessary to pull each sling separately through the coat, one through an opening in the side and the other through the slit in the back and then attach the sword. When my improved belt is used the over coat is put on over the belt and the slings and sword are attached by inserting the hook B through the horizontal opening and hooking it onto the loop c. Of course when the slings are securely attached at this point they can be pulled through. When the belt is worn outside it is superior to the old style on account of its greater strength and

because it allows the coat to hang smooth and free from wrinkles and because in my most approved construction it is readily detachable.

5 Numerous other means of attaching the slings to the belt in the region of the left hip can be readily devised so in the construction of my device I do not choose to be confined to the exact details shown.

10 Having thus described my invention, what I claim, and desire to secure by Letters Patent, is—

1. In a sword belt, the combination of a belt, A, a loop, c, and the broad, flattened hook, B, 15 carrying the stiffened sword slings, C and D, which hang parallel to each other at the top, and the elongated sword hook, F, substantially as described for the purpose specified.

2. In a sword belt, the combination of the 20 loop, c, attached to the belt, A, the hooks, B, the stiffened slings, C, and D, attached to said hook and hanging substantially vertical parallel to each other at the top, and the elongated sword hook, F, adapted to emerge 25 through a slit in the coat or blouse, for the purpose specified.

3. In a sword belt, the combination with a ring, c, of a flattened snap-hook for carrying the sword, slings having a catch, a, project- 30 ing through the back of said hook and against the front portion to retain the ring, c, in a small space the said catch being attached to the flatspring, b, which rests against the back of the hook in close contact therewith, sub- 35 stantially as described.

4. The combination of a belt, sword slings attached thereto in the region of the left hip

adapted to hang at their upper portions substantially vertical and parallel with each other, and a suitable stiffening, and the shield 40 to engage the upper portions of said slings and prevent them from twisting or crossing each other, for the purpose specified.

5. In a sword belt, the combination with the loop rigidly attached thereto, of a sword sling 45 hook flattened together to closely engage the loop and allow the upper portion of the sling to hang in a vertical position and prevent twisting or other disarrangement of the sword sling, for the purpose specified. 50

6. In a sword belt, the combination of a belt with the sword slings attached thereto so as to hang in a substantially vertical position, and an elongated sword hook adapted to emerge through a slit in the side of the blouse 55 so that the slings can be looped around the bottom of the blouse without injuring or disarranging the same, for the purpose set forth.

7. In a sword belt, the combination with a loop on said belt, of a snap from which the 60 sword slings hang flattened together and containing a catch mortised through the back of said hook, the inner side of which is substantially at right angles to the hook and engages the loop on the belt so that any motion of the 65 loop cannot engage the catch to displace it and release the snap, for the purpose specified.

In witness whereof I have hereunto set my hand and seal in the presence of two witnesses.

SAMUEL N. BICKERSTAFF. [L. s.]

Witnesses:

F. H. DALEY,  
J. B. KEYES.